

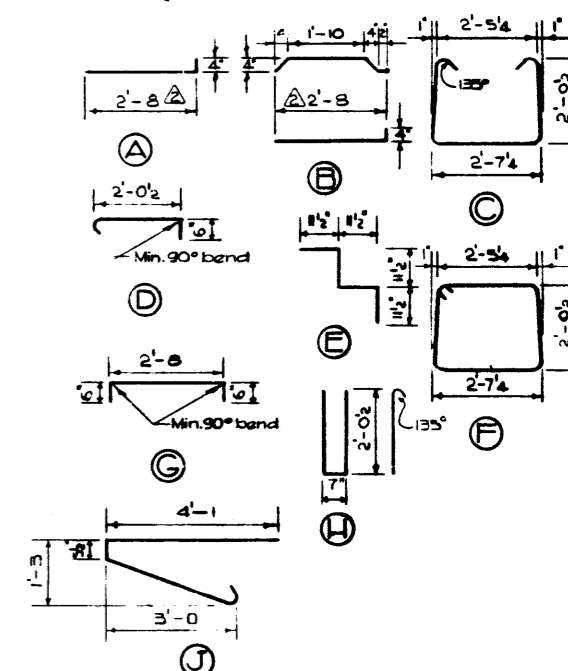
**BAR LIST**

Mark	Size	No.	Type	Length	Weight
S301	3	56	A	3'-0	63
S302	3	30	B	3'-3	61
S303	3	69	C	7'-4	190
S304	3	60	D	2'-10	74
S305	3	23	E	3'-10	33
S401	4	2	F	8'-10	13
E401	4	4	G	3'-8	10
E501	5	4	H	3'-6	23
C401	4	109	J	8'-1	589
C501	5	16	str.	28'-3	471

Total lbs.: 1461  
Δ lbs. 1527

**BAR TYPES N.T.S.**

(All bar dimensions are out to out)



**GENERAL NOTES**

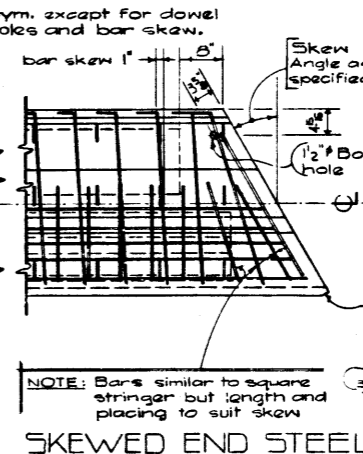
- DESIGN** A.A.S.H.O. 1961 Specifications  
Loading: 3/5 of one wheel line of an HS 20-44 truck plus full dead load plus 2" wearing surface.
- MATERIALS** Concrete shall be of standard weight aggregate with a maximum size of 3/4". Minimum compressive strength shall be 5000 p.s.i. at 28 days. Air entrainment to be not less than 5%.
- FABRICATION** Reinforcement: Diameter of all bends shall conform to the recommended sizes and all hooks, unless otherwise noted, shall conform to the recommended sizes detailed in the A.C.I. Manual of Standard Practice for Detailing Reinforced Concrete Structures.  
Prestressing steel: Initial tensioning load = 25.2 k/Cable  
Design load = 20.16 k/Cable  
Concrete must attain 4,000 p.s.i. compressive strength before the prestressing force is transferred. Units are to conform to the requirements of the Bridge Branch Specifications for Prestressed Concrete Bridge Units.
- ERECTION** Lifting force at each hook must be vertical at all times. Stringer surface must be level at all times.

**PRESTRESSED CONCRETE  
55 FT. SPAN  
27' TYPE "M" CURB STRINGER**

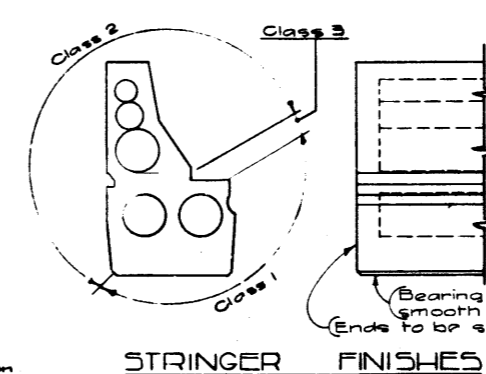


GOVERNMENT OF THE PROVINCE OF ALBERTA  
DEPARTMENT OF HIGHWAYS  
BRIDGE BRANCH, EDMONTON

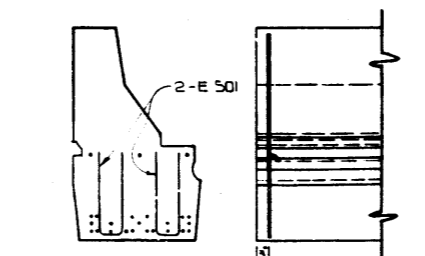
FILE NO. \_\_\_\_\_ HWY. NO. \_\_\_\_\_ DATE OF SCALE SHOWN \_\_\_\_\_ SHEET 3 OF 5-929



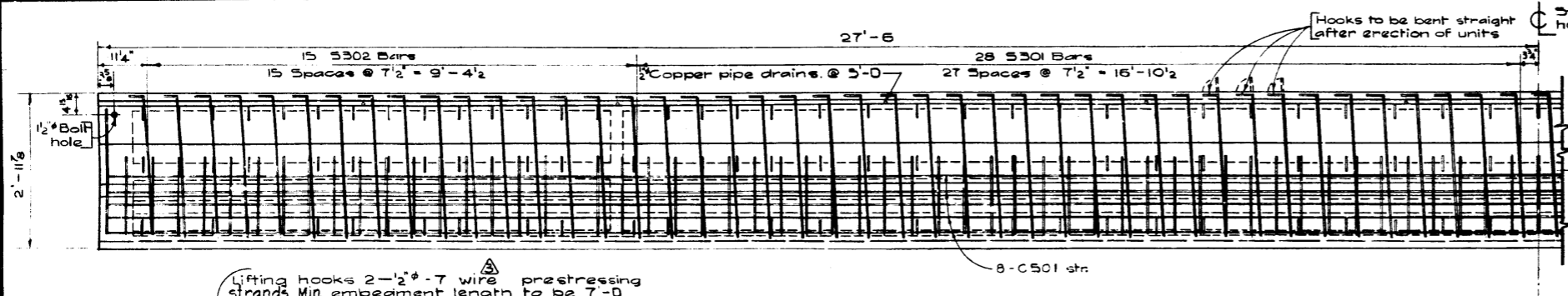
**SKewed END STEEL**



**STRINGER FINISHES**

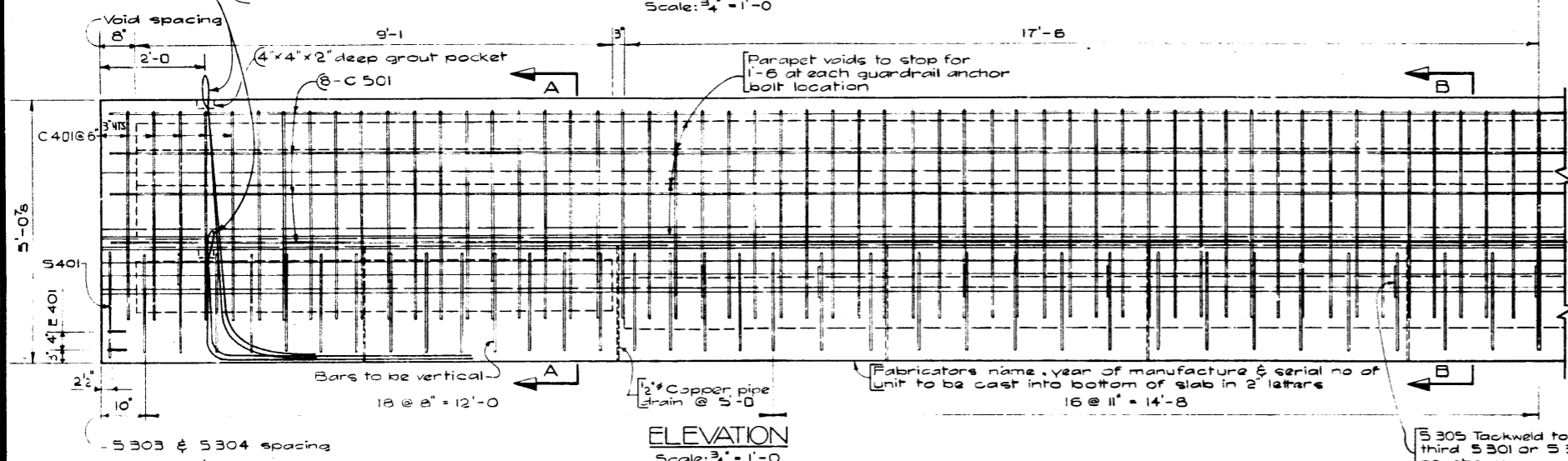


**ADDITIONAL END BARS**



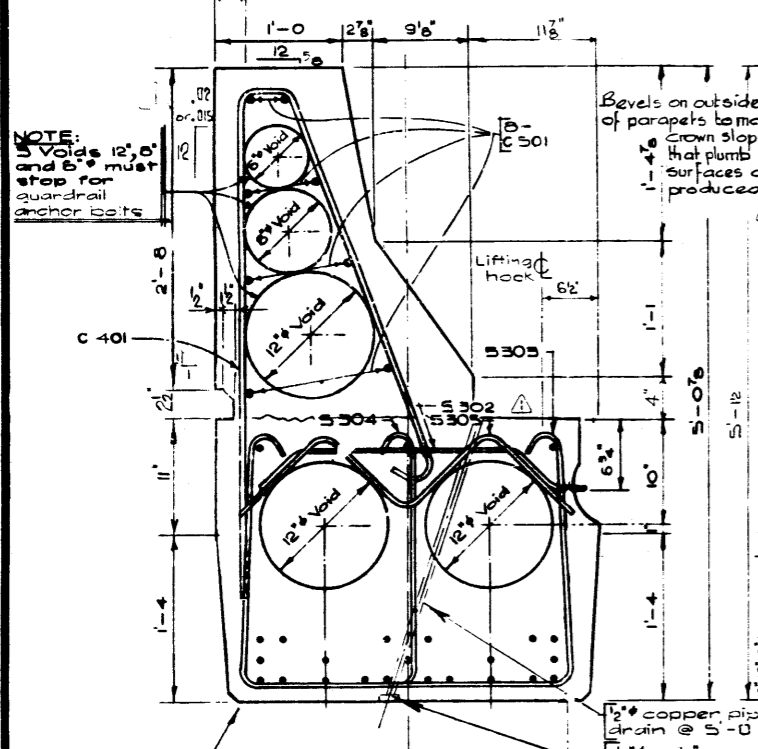
**PLAN**

Scale: 3/4" = 1'-0"



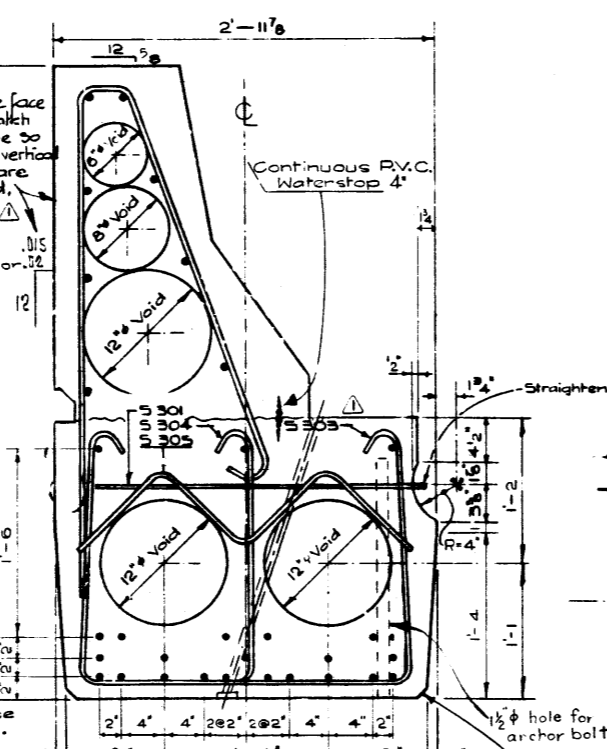
**ELEVATION**

Scale: 3/4" = 1'-0"



**SECTION A-A**

Scale: 1/2" = 1'-0"



**SECTION B-B**

Scale: 1/2" = 1'-0"

**BAR SKEW**

Scale: 1" = 1'-0"

NOTE: Voids 12", 6" and 5" must stop for guardrail anchor bolts

NOTE: Voids to be tied to S 305 bars.

24 - 1/2" x 7 wire uncoated pre-stressing strands

DESIGNED BY W.J. Hamilton DATE March 19 67  
CHECKED BY F.W. Buda DATE April 18 67

NO.	DATE	DESCRIPTION	BY
1	March 20/68	Prestressing strands	R.Ch.
2	Feb. 20/68	Bar length	R.Ch.
3	Dec. 4, 1967	Parapet bevel added	P.S.