

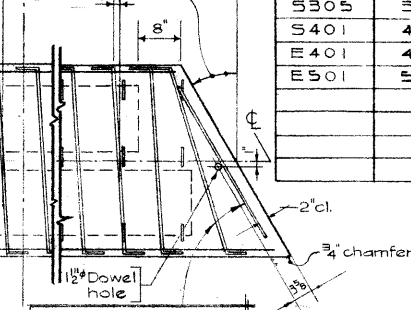
**BAR LIST**

Mark	Size	No.	Type	Length	Weight
S301	3	66	A	3'-5"	87
S302	3	32	B	3'-8"	44
S303	3	80	C	7'-4"	220
S304	3	80	D	2'-10"	85
S305	3	26	E	3'-10"	37
S401	4	2	F	9'-10"	13
E401	4	4	G	3'-8"	10
E501	5	6	H	5'-4"	33

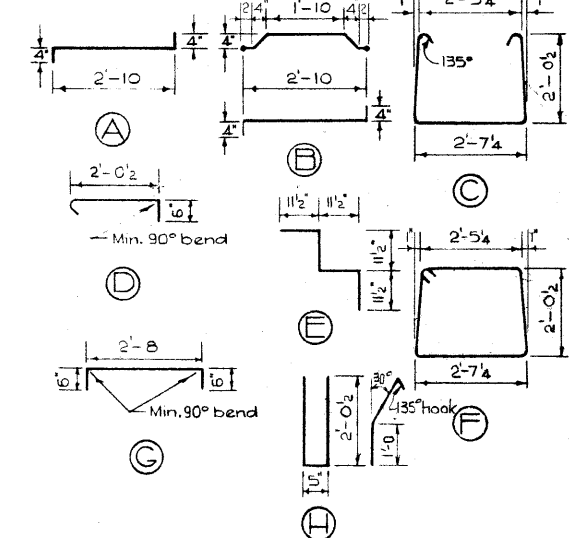
Total lbs: 529

5/8" Sym. except for dowel holes and bar skew

1'-9 3/4" Angle as specified  
bar skew 1"

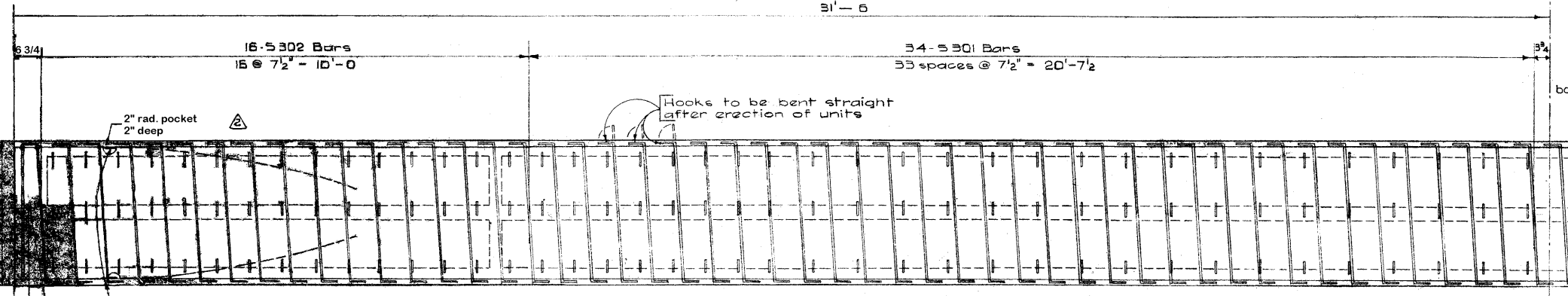


**BAR TYPES N.T.S.**  
**SKewed STEEL END** (All bar dimensions are out to out)  
Scale: N.T.S.

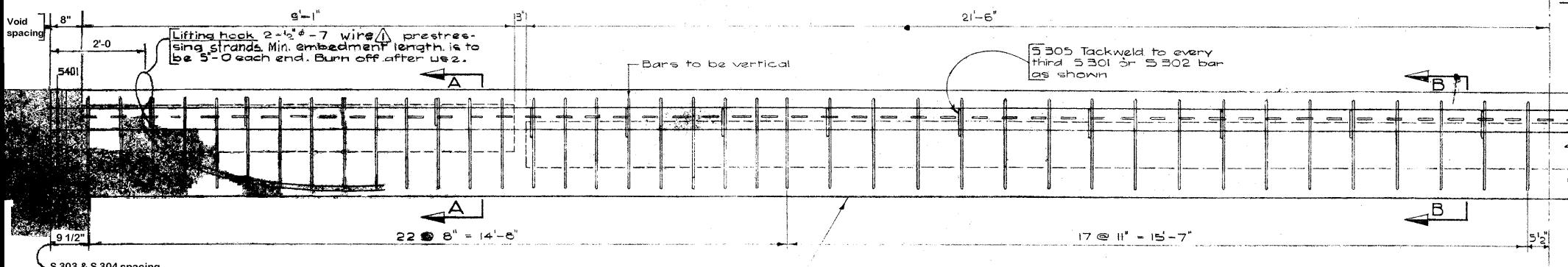


**GENERAL NOTES**

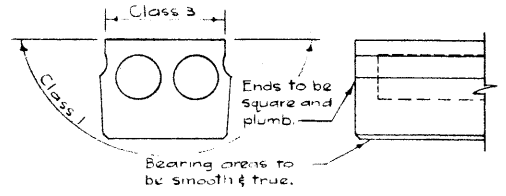
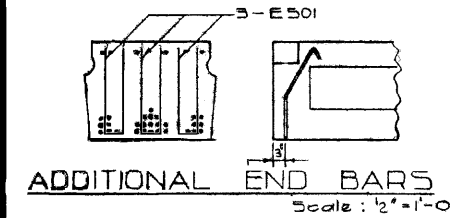
- DESIGN** A.A.S.H.O. 1961 Specifications  
Loading: 3/5 of one wheel line of an HS20-44 truck plus full dead load plus 2" wearing surface.
- MATERIALS** Concrete shall be of standard weight aggregate with a maximum size of 3/4". Minimum compressive strength shall be 5000 p.s.i. at 28 days. Air entrainment to be not less than 5%.
- FABRICATION** Reinforcement: Diameters of all bends shall conform to the recommended sizes and all hooks, unless otherwise noted, shall conform to the recommended sizes detailed in the A.C.I. Manual of Standard Practice for Detailing Reinforced Concrete Structures.  
Prestressing steel: Initial tensioning load = 25.2 k/Cable  
Design load = 20.18 k/Cable  
Concrete must attain 4,300 p.s.i. compressive strength before the prestressing force is transferred. Units are to conform to the requirements of the Bridge Branch Specifications for Prestressed Concrete Bridge Units.
- ERECTION** Lifting force at each hook must be vertical at all times. Stringer surface must be level at all times.



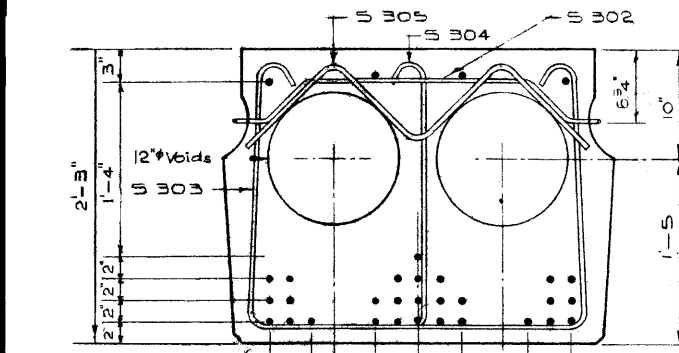
**PLAN**  
Scale: 3/4" = 1'-0"



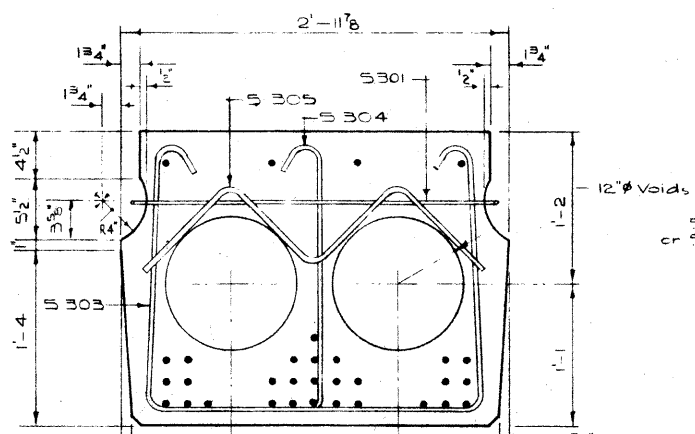
**ELEVATION**  
Scale: 3/4" = 1'-0"



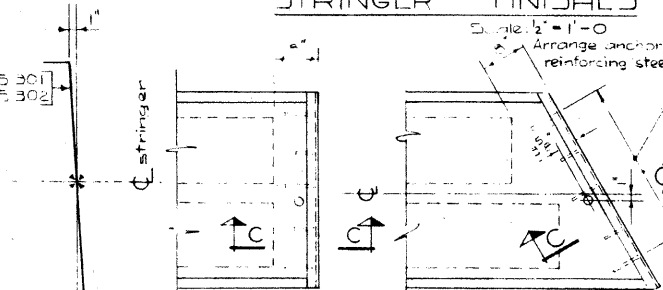
**STRINGER FINISHES**



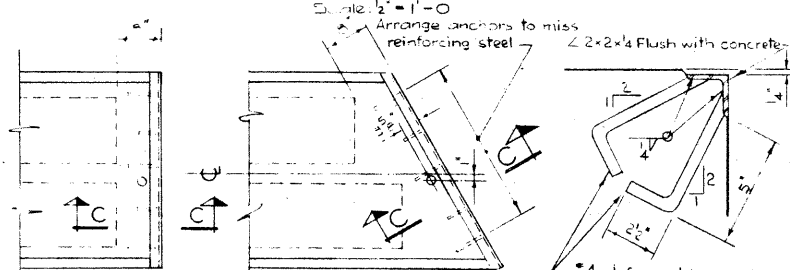
**SECTION A-A**  
Scale: 1/2" = 1'-0"



**SECTION B-B**  
Scale: 1/2" = 1'-0"



**BAR SKEW**  
Scale: 1" = 1'-0"



**PROTECTION ANGLE**  
Provide when called for. Scale: 3" = 1'-0"

NO.	DATE	DESCRIPTION	BY
1	Feb. 10/63	Lifting hook	L.K.
2	Feb. 23/68	Prestressing strands	R.Ch.

**PRESTRESSED CONCRETE**  
**63 FT. SPAN**  
**27" TYPE "M" STRINGER**

GOVERNMENT OF THE PROVINCE OF ALBERTA  
DEPARTMENT OF HIGHWAYS  
BRIDGE BRANCH, EDMONTON

FILE NO. \_\_\_\_\_ HWY. NO. \_\_\_\_\_ DWS. NO. \_\_\_\_\_  
LOCATION SCALE as shown SHEET OF 5-930

POSTED