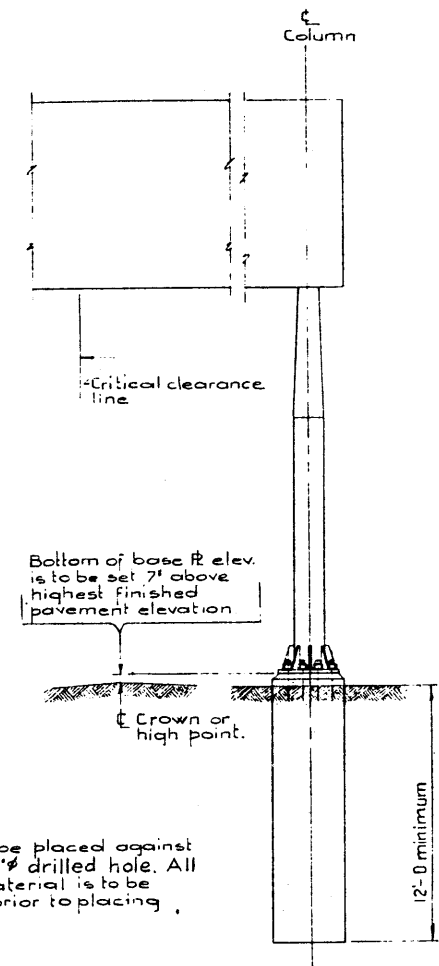
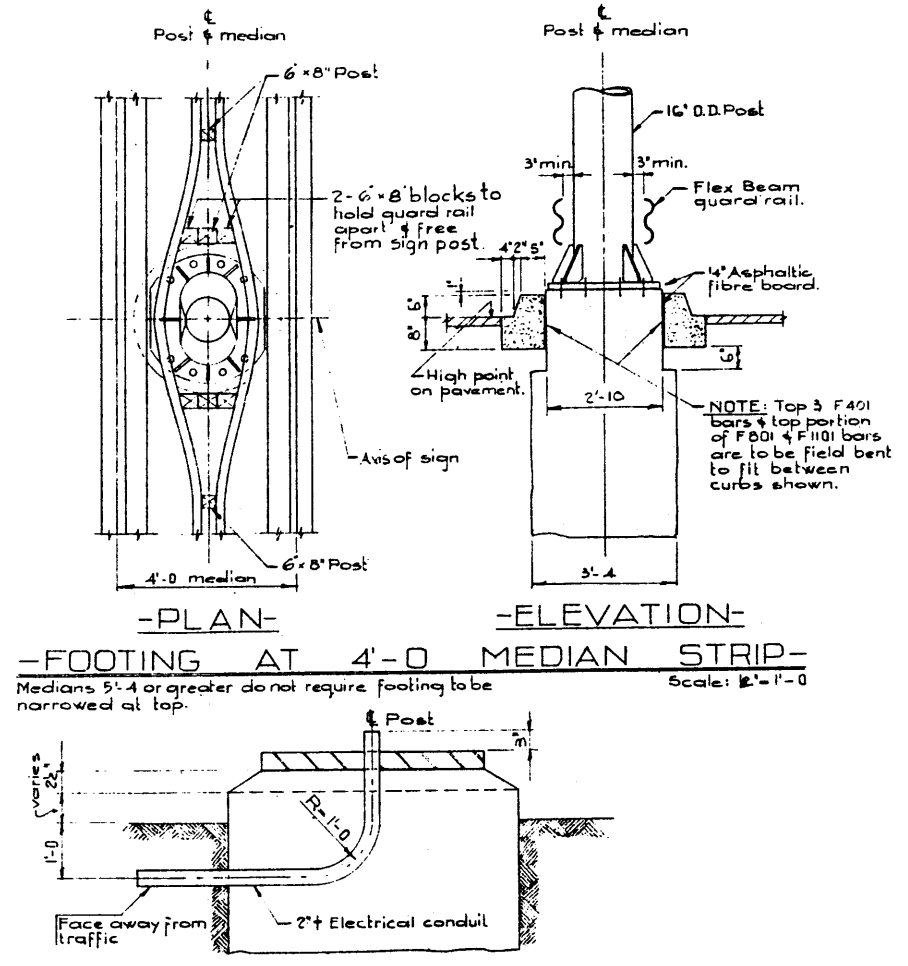


- BUTTERFLY TYPE SIGN ELEVATION -
Scale: 1/4" = 1'-0"



- SIGN BRIDGE ELEVATION -
Scale: 1/4" = 1'-0"



- PLAN -
- ELEVATION -
- FOOTING AT 4'-0 MEDIAN STRIP -
Medians 5'-4 or greater do not require footing to be narrowed at top.
Scale: 1/2" = 1'-0"

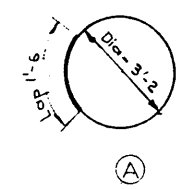
- CONDUIT DETAIL -
Scale: 1" = 1'-0"

BAR LIST 1'-FOOTING

MARK	SIZE	NUMBER	TYPE	LENGTH	WEIGHT
F 801	8	2	Str.	11'-8"	62
F 401	4	24	A	11'-1"	184
F 1101	11	10	Str.	11'-8"	620
					Tot. Lbs: 866

NOTE: Bars are to be assembled into a cage with wire ties.

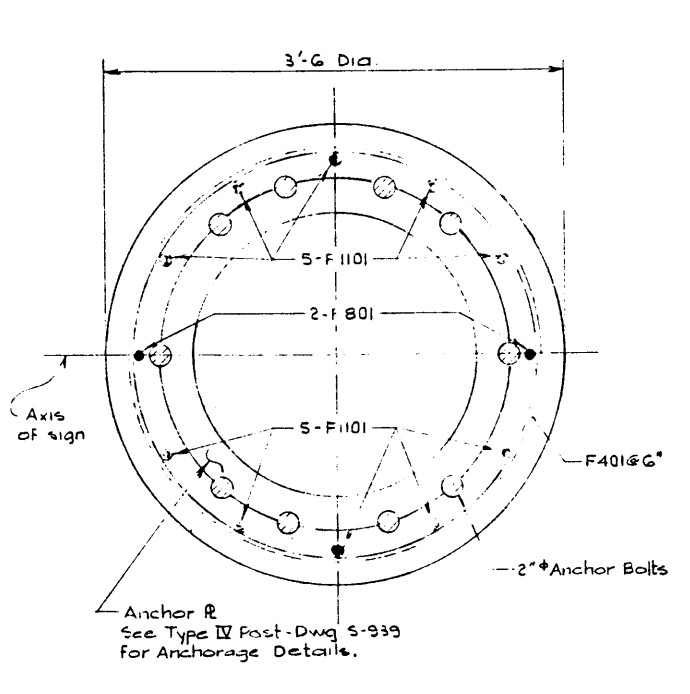
BAR TYPES
All bar dimensions out to out



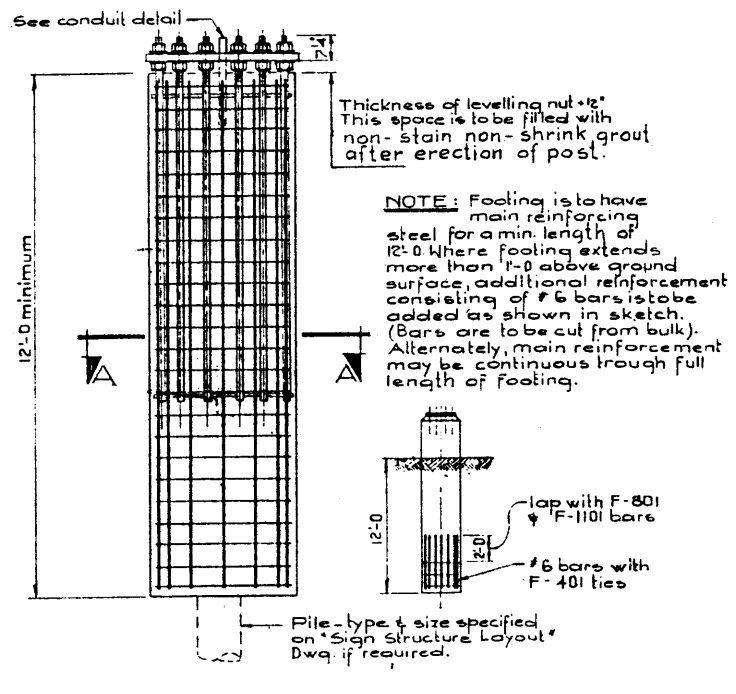
GENERAL NOTES

- All concrete is to be Class 'A' concrete.
- Reinforcing steel is to have 2" clear cover.
- Reinforcing Steel shall be Intermediate Grade.
- For "General Notes" see d.wg. E-920
- "Railing Details" & "Notes".

DESIGNED BY D.H. Quapp
DATE May 1962
CHECKED BY
DATE



- SECTION A - A -
Scale: 1/2" = 1'-0"



- FOOTING ELEVATION -
Scale: 1/2" = 1'-0"

QUANTITY ESTIMATE

ITEM	UNIT	ESTIMATE	AS CONST.
Concrete Class 'A'	Cu.Yds.	4	
Reinforcing steel	Lbs.	866	

NO.	DATE	DESCRIPTION	BY
1	Dec 11, 1967	Redrawn from 4192-P	V.B.

BUTTERFLY SIGN STRUCTURE
FOOTING DETAILS
TYPE IV

GOVERNMENT OF THE PROVINCE OF ALBERTA
DEPARTMENT OF HIGHWAYS
BRIDGE BRANCH, EDMONTON

FILE NO. _____ HWY. NO. _____ DWG. NO. S-935
LOCATION _____ SCALE _____ SHEET OF _____

ALBERTA RECORDS CENTER