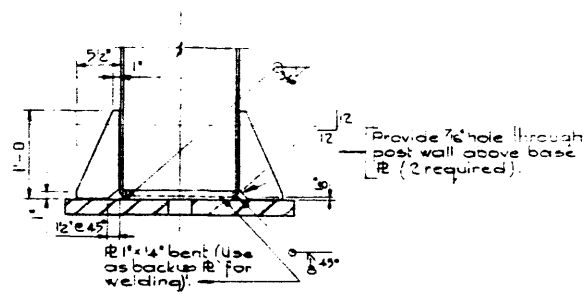
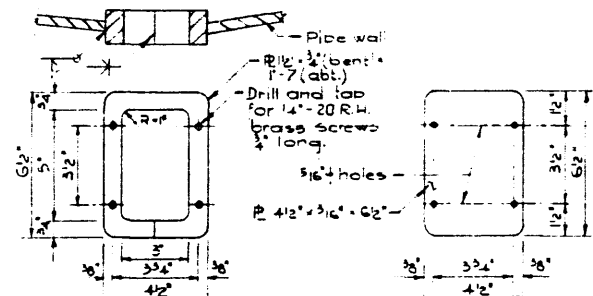


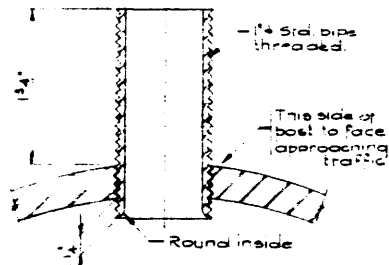
-SIGN POST-
 1 Required per sign Scale: 1"=1'-0"



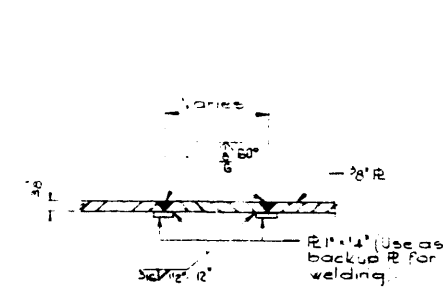
-SECTION A-A-
 Scale: 1"=1'-0"



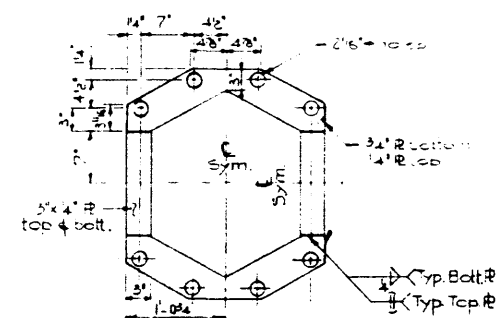
-HANDHOLE & COVER DETAILS-
 1 Required per post Scale: 3"=1'-0"



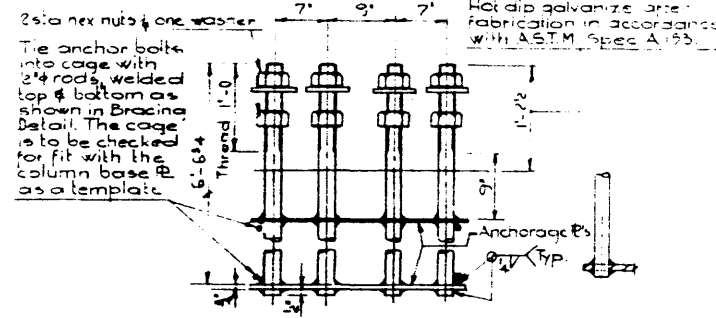
-DETAIL 'A'-
 Scale: Full size



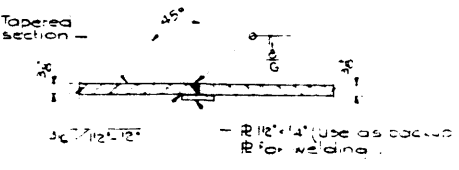
-SECTION B-B-
 Scale: 3"=1'-0"



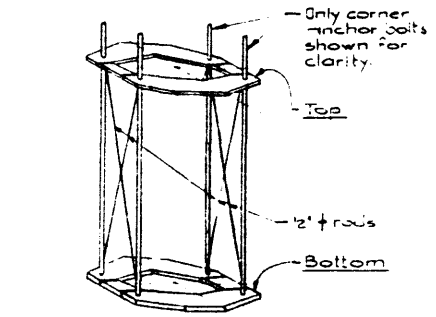
-ANCHORAGE PLATES-
 N.T.S.



-ANCHORAGE DETAIL-
 1 cage required per post Scale: 1"=1'-0"



-DETAIL 'C'-
 Scale: 3"=1'-0"



-BRACING DETAIL-
 N.T.S.

NOTES

- For General Notes see Dwg # S-960 "Railing Details and Notes"
- An alternate post may be fabricated with the tapering and split portions of the post formed from 3" R bent to an equivalent section.
- Approx. weight per column = 2300 Lbs.

Work this drawing in conjunction with 'Sign Structure Layout' and 'Frame Details' drawings.

BUTTERFLY SIGN STRUCTURE TYPE III POST



GOVERNMENT OF THE PROVINCE OF ALBERTA
 DEPARTMENT OF HIGHWAYS
 BRIDGE BRANCH, EDMONTON

NO.	DATE	DESCRIPTION	BY

FILE NO.	HWY. NO.	DWG. NO.
LOCATION	SCALE	S-938
STREAM	SHEET	OF