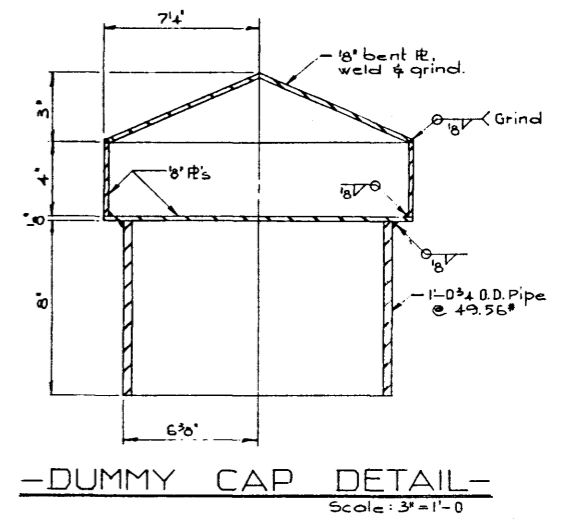
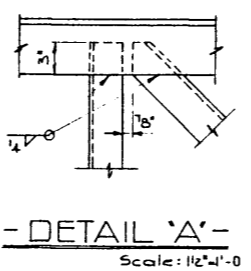


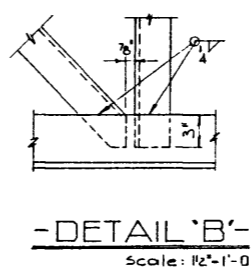
-TYPICAL SECTION A-A-  
Scale: 1/2"=1'-0"



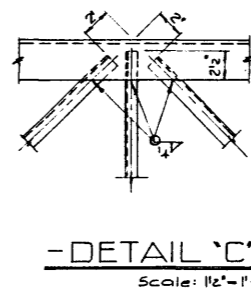
-DUMMY CAP DETAIL-  
Scale: 3/4"=1'-0"



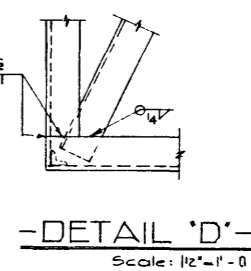
-DETAIL 'A'-  
Scale: 1/2"=1'-0"



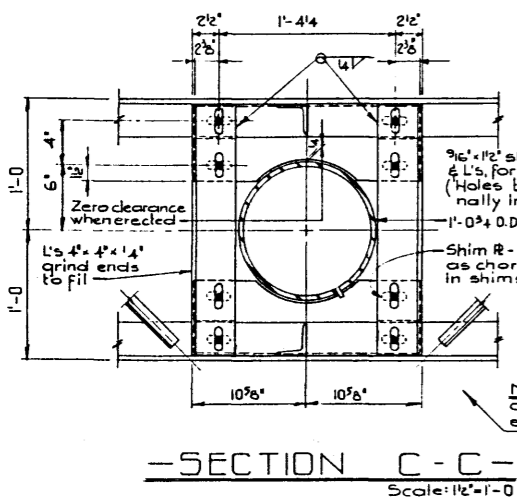
-DETAIL 'B'-  
Scale: 1/2"=1'-0"



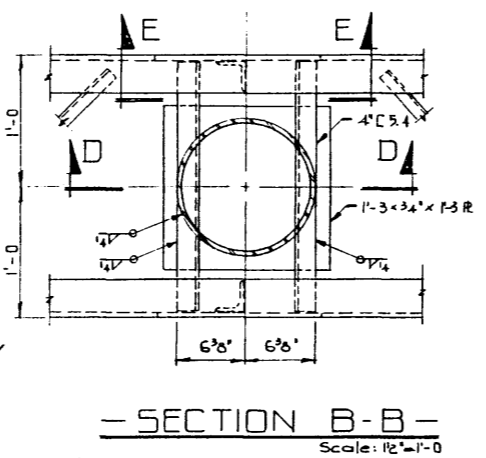
-DETAIL 'C'-  
Scale: 1/2"=1'-0"



-DETAIL 'D'-  
Scale: 1/2"=1'-0"



-SECTION C-C-  
Scale: 1/2"=1'-0"



-SECTION B-B-  
Scale: 1/2"=1'-0"

NOTE:  
• For "General Notes", see dwg. S-960, "Railing Details & Notes."

• Work this dwg. in conjunction with "Sign Structure Layout", Post, & "Walkway Details" dwgs.

STANDARD SIGN BRIDGE  
43'-8" SPAN  
TRUSS DETAILS  
WITH OR WITHOUT CANTILEVER SECTION

GOVERNMENT OF THE PROVINCE OF ALBERTA DEPARTMENT OF HIGHWAYS BRIDGE BRANCH, EDMONTON			
FILE NO.	HWY. NO.	DWG. NO.	
LOCATION	SCALE	S-941	
STREAM	SHEET	OF	

NO.	DATE	DESCRIPTION	BY
1	Oct. 30 67	Redrawn from 4145-P	M.F.

DESIGNED BY D.H. QUAPP  
CHECKED BY  
DATE JUNE 1952

ALBERTA RECORDS CENTRE