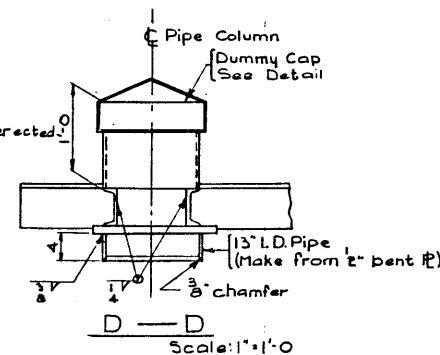
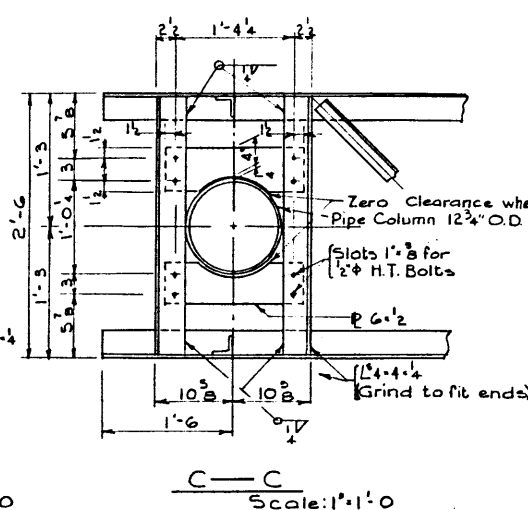
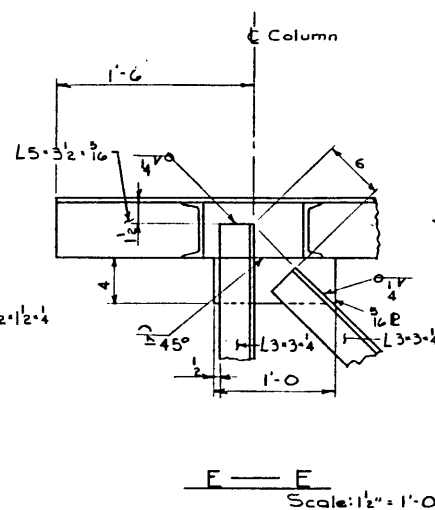
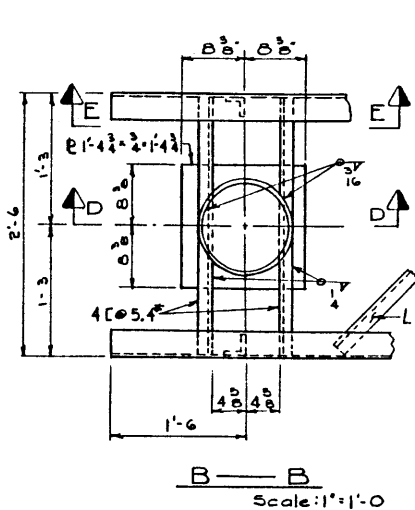
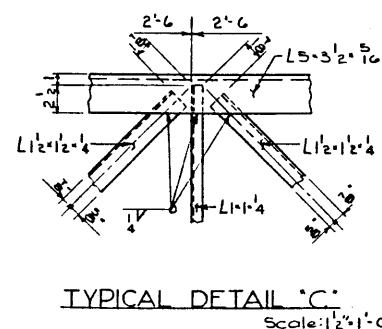
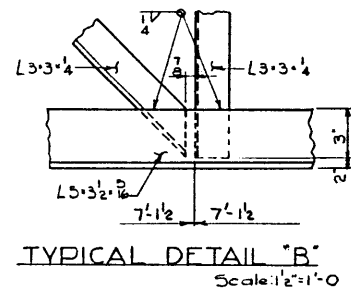
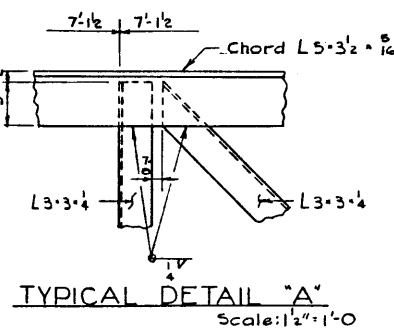


NOTES :
 *For "General Notes" see
 dwg. S-950, "Railing Details & Notes."



Work this dwg. in conjunction with
 "Sign Structure Layout," "Post,"
 & "Walkway Details" dwgs.

STANDARD SIGN BRIDGE 57' SPAN TRUSS DETAILS

GOVERNMENT OF THE PROVINCE OF ALBERTA
 DEPARTMENT OF HIGHWAYS
 BRIDGE BRANCH, EDMONTON

NO.	DATE	DESCRIPTION	BY
1	Sept 26/66	Redrawn from 3349-PDA	
REVISIONS			

FILE NO. _____ HWY. NO. _____ DWG. NO. _____
 LOCATION _____ SCALE as noted _____
 SHEET _____ OF _____ S-947

DESIGNED BY D.H. QUAPP DATE April 1961
 CHECKED BY D.H. QUAPP DATE April 1961