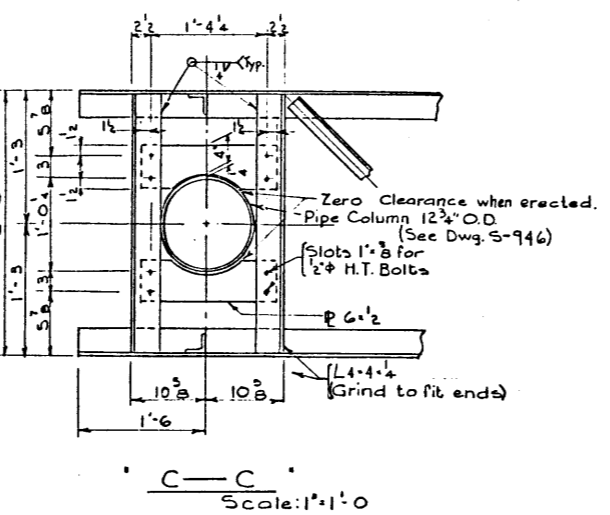
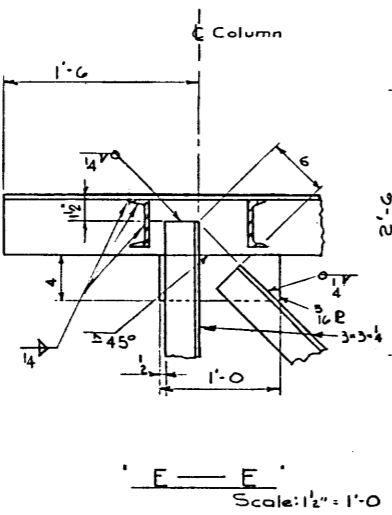
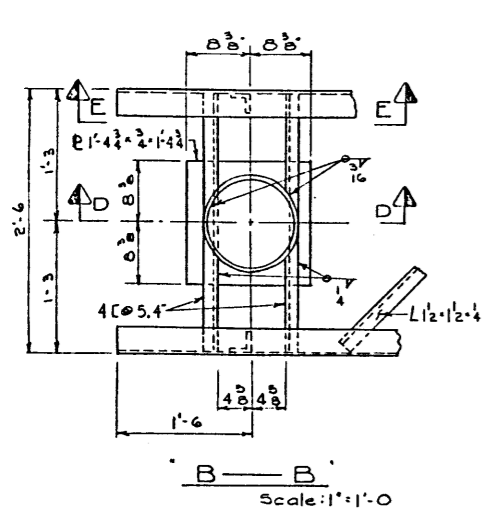
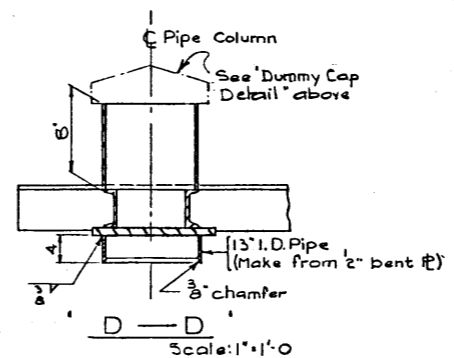
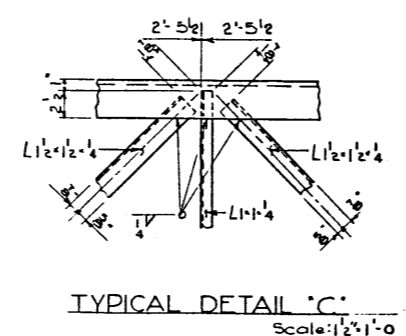
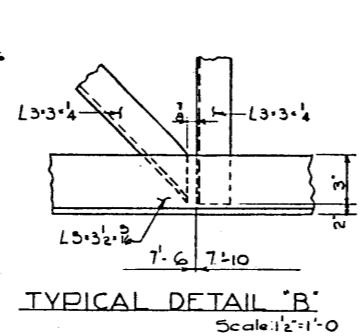
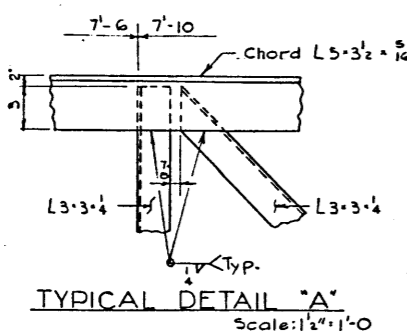


NOTES:
 For 'General Notes' see dwg. S-900, 'Railing Details & Notes.'



Work this dwg. in conjunction with 'Sign Structure Layout', 'Post', & 'Walkway Details' dwgs.

STANDARD SIGN BRIDGE
 60'-8" SPAN
 TRUSS DETAILS

GOVERNMENT OF THE PROVINCE OF ALBERTA
 DEPARTMENT OF HIGHWAYS
 BRIDGE BRANCH, EDMONTON

NO.	DATE	DESCRIPTION	BY
	Oct. 12/67	Redrawn from 4165-P D.A.	

FILE NO. _____ HWY. NO. _____ DWG. NO. _____
 LOCATION _____ SCALE AS NOTED _____
 SHEET _____ OF _____ S-949

DESIGNED BY D.H. QUORP DATE Dec. 1961
 CHECKED BY D.H. QUORP DATE Dec. 1961

