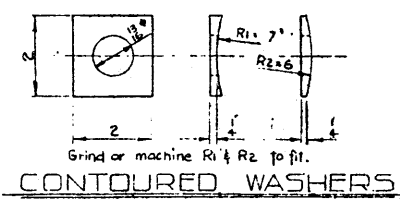
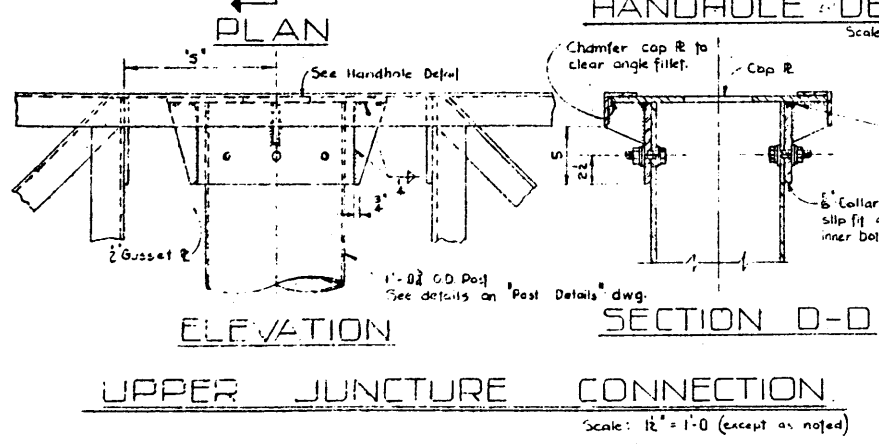
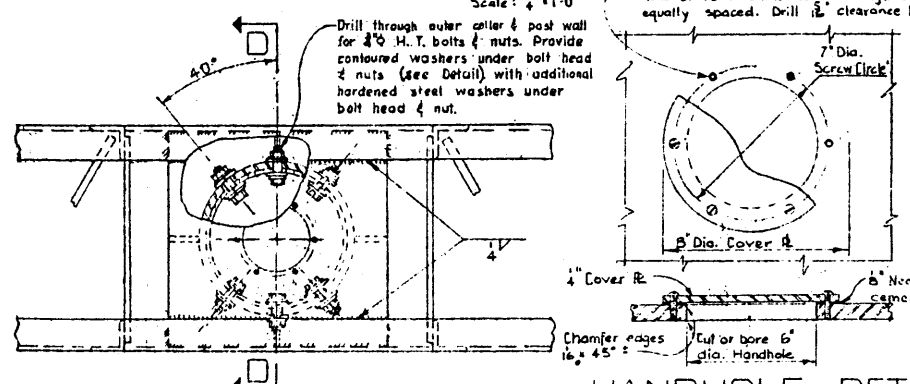
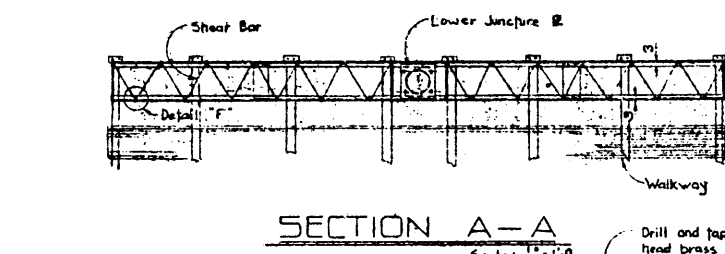


TYPICAL JOINT DETAILS

Not to scale

- NOTES**
- FOR GENERAL NOTES SEE DRAWING S 960, "RAILING DETAILS AND NOTES"
 - BOTTOM OF FRAME IS TO BE LEVEL.
 - SIGN SHALL BE SUPPORTED AT TOP OF POST.
 - AT LOWER JUNCTURE CONNECTION, SHIMS SHALL BE USED WHERE ANY CLEARANCE EXISTS BETWEEN BOTTOM OF FRAME AND POST PLATE PRIOR TO TIGHTENING OF BOLTS IN LOWER CONNECTION.



NO.	DATE	DESCRIPTION	BY
1	Oct. 4/61	Redrawn from 3350-P	D.A.

REVISIONS

BUTTERFLY SIGN STRUCTURE

FRAME DETAILS

GOVERNMENT OF THE PROVINCE OF ALBERTA
DEPARTMENT OF HIGHWAYS
BRIDGE BRANCH, EDMONTON

FILE NO. _____ HWY. NO. _____ DWG. NO. **S-957**

LOCATION _____ SCALE **AS NOTED**

SHEET _____ OF _____

DESIGNED BY: D. H. GUSKY
DATE: March 1952

DETAILED BY: D. H. GUSKY
DATE: March 1952

CHECKED BY: _____
DATE: _____

ALBERTA RECORDS CENTRE
7248889