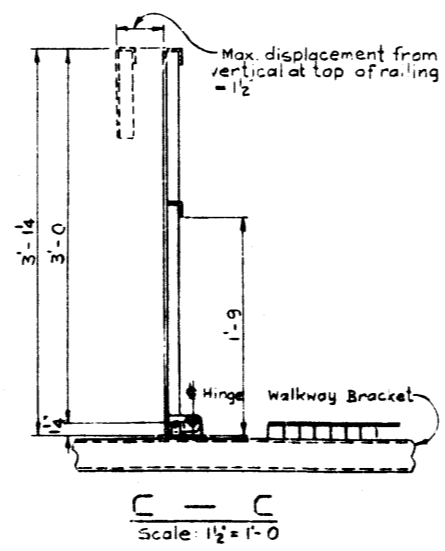
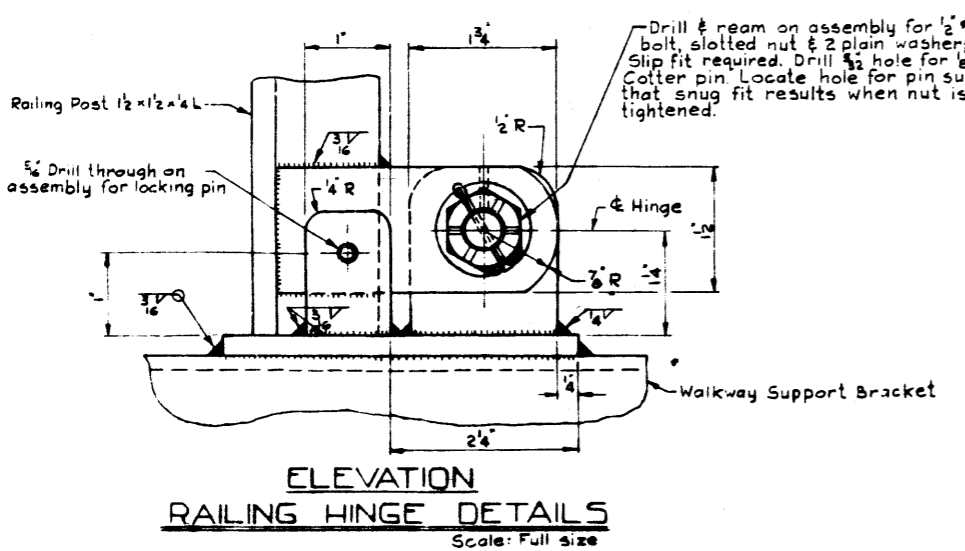
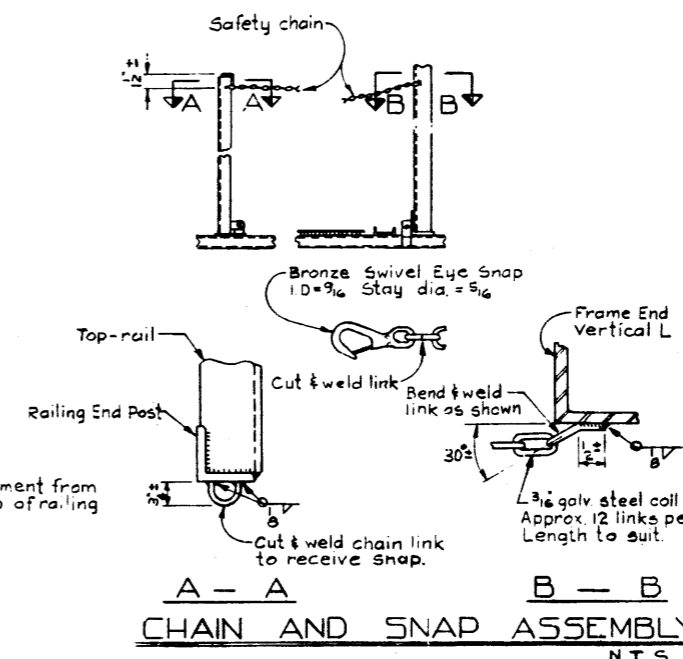
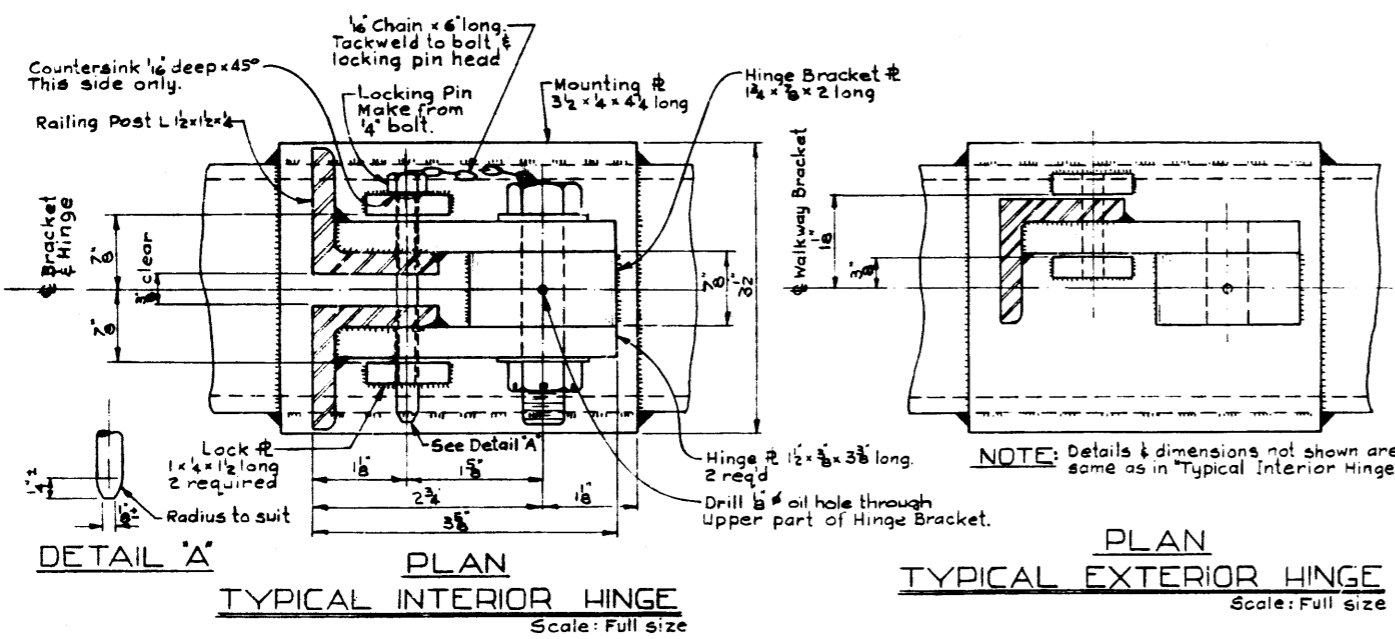
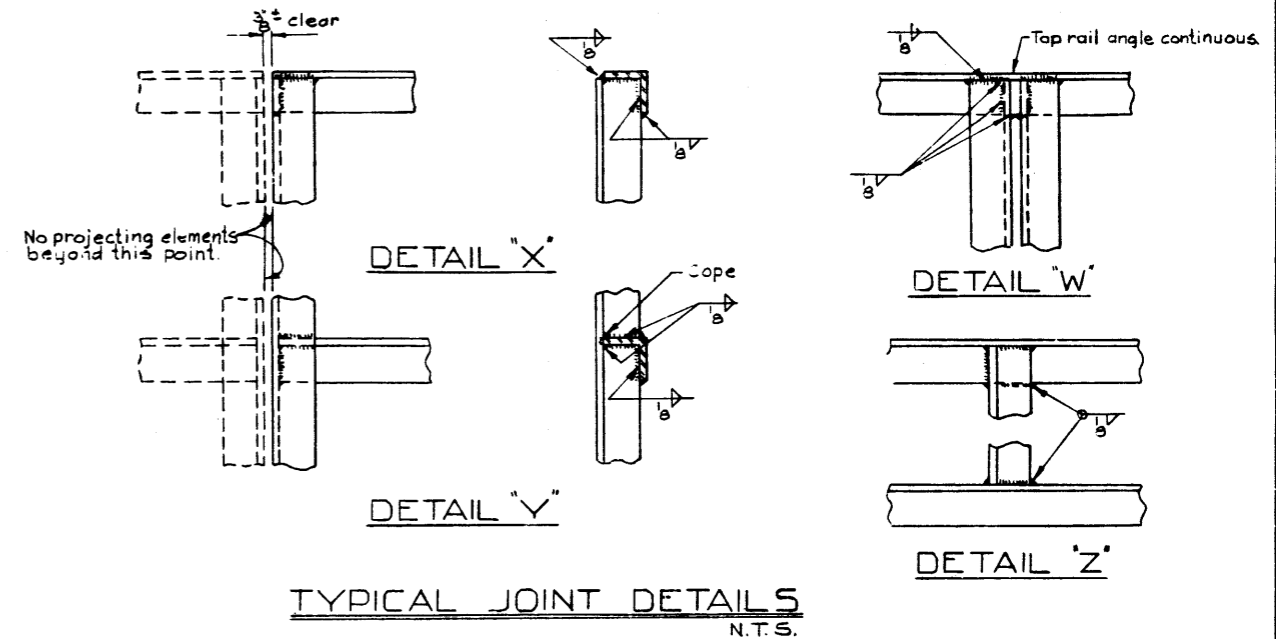
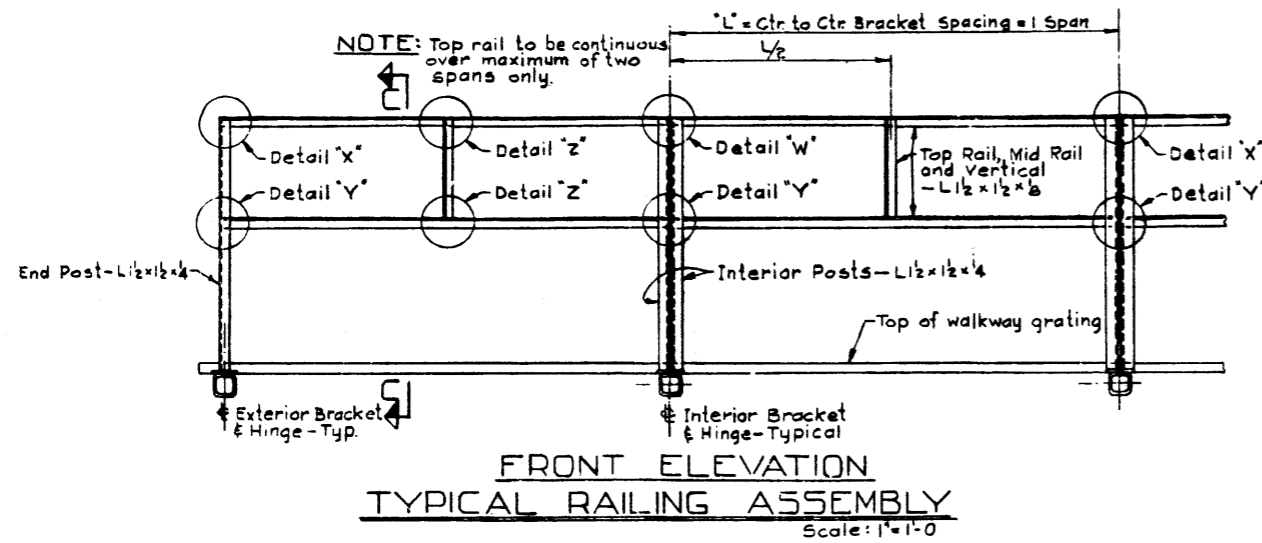


DESIGNED BY D. H. GUOPP  
 DATE March 1962  
 CHECKED BY D. H. GUOPP  
 DATE  
 DRAWN BY  
 DATE



- ### GENERAL NOTES
- These notes shall apply to all drawings in this set.
  - Fabrication shall conform to Bridge Branch Specification B-187-64, and interior.
  - Materials: Bars, plates, shapes & anchor bolt assemblies shall be A.S.T.M. A-36 steel. Sheet shall be carbon sheet steel, A.S.T.M. A-245, Grade "C". Pipe in posts shall be welded or seamless steel pipe, A.S.T.M. A-53, Grade "B". Pipe posts fabricated from A-36 steel will be accepted.
  - Supply bolts & washers as noted. Bolts & nuts to have hex heads.
  - All steel shall be blast cleaned in accordance with Specification SSPC-SP-6-63T of the Steel Structures Painting Council before painting. Painting shall not commence until cleaning has been approved by the Engineer.
  - Shop Paint: All surfaces not in contact with steel or concrete shall be given one coat of paint conforming to the requirements of the C.G.S.B. Specification 1-GP-166A Type III having a dry thickness of 1.5 to 2.5 mils. In addition bars shall be applied one coat of aluminum paint conforming to the requirements of the C.G.S.B. Specification 1-GP-190 & 1-GP-24C.
  - Field Paint: Touch up all disfigurements and field bolts.
  - All shop splices shall be shown on the shop drawings for approval by the Department. All chord splices shall be radiographed by the fabricator at his expense and are to meet A.V.S. requirements.
  - All column to base plate ~~and~~ welds will be tested by the Department, either by the ultrasonic method or by the magnetic particle method. Any extra testing due to repairs which may be required will be at the expense of the fabricators.
  - Electrical conduit and fixtures not to be supplied by structural steel supplier.

One chain and snap assembly required at each safety railing end post which occurs at ends of sign and walkway area. Two assemblies required for each single-faced sign bridge or each 'butterfly' type sign.

Work this Dwg. in conjunction with 'Walkway Details' and 'Truss' or 'Frame' Dwg's.

**SIGN STRUCTURES**

**RAILING DETAILS & NOTES**

GOVERNMENT OF THE PROVINCE OF ALBERTA  
DEPARTMENT OF HIGHWAYS  
BRIDGE BRANCH, EDMONTON

NO.	DATE	DESCRIPTION	BY
1	Oct 9/74	General Notes	R.G.
2	Aug 16/71	Paint Notes updated	R.W.K.
3	Nov 15/67	Redrawn from 3323-P	R.G.

FILE NO. \_\_\_\_\_  
 LOCATION \_\_\_\_\_  
 SCALE as shown 5-960  
 SHEET \_\_\_\_\_ OF \_\_\_\_\_