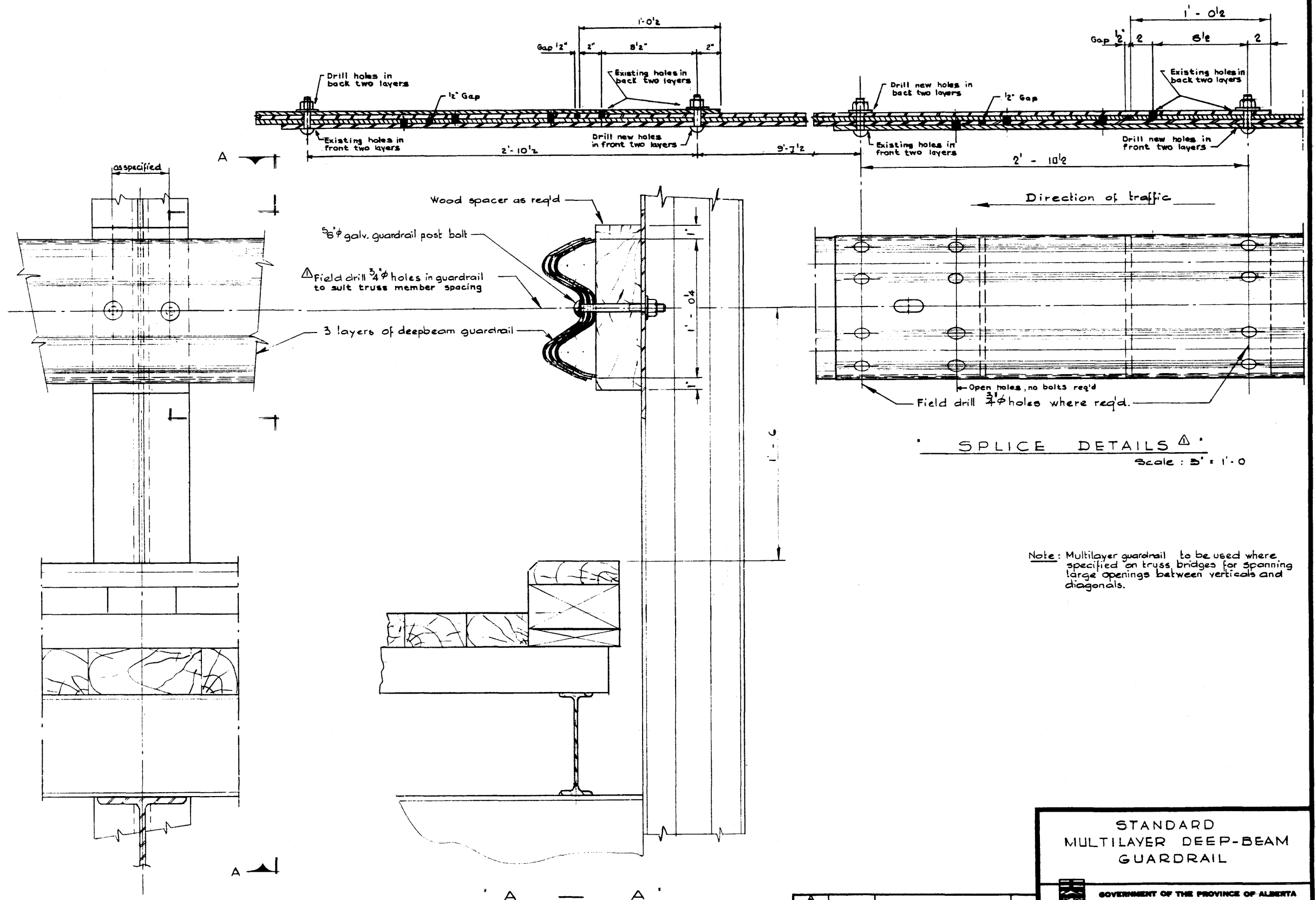


DESIGNED BY R. W. Kemp, Sr. DATE Dec. 19 67  
 CHECKED BY P. S. G. DATE Dec. 19 67



THREE LAYER DEEP-BEAM GUARDRAIL  
 Scale: 3" = 1'-0"

SPLICE DETAILS  
 Scale: 3" = 1'-0"

Note: Multilayer guardrail to be used where specified on truss bridges for spanning large openings between verticals and diagonals.

NO.	DATE	DESCRIPTION	BY
1	MAR 12, 1974	GENERAL	J.L.S.

STANDARD  
 MULTILAYER DEEP-BEAM  
 GUARDRAIL

GOVERNMENT OF THE PROVINCE OF ALBERTA  
 DEPARTMENT OF HIGHWAYS  
 BRIDGE BRANCH, EDMONTON

FILE NO. \_\_\_\_\_ REV. NO. \_\_\_\_\_ DWS. NO. \_\_\_\_\_  
 LOCATION \_\_\_\_\_ SCALE \_\_\_\_\_ BY \_\_\_\_\_  
 SHEET \_\_\_\_\_ OF \_\_\_\_\_ 5-961