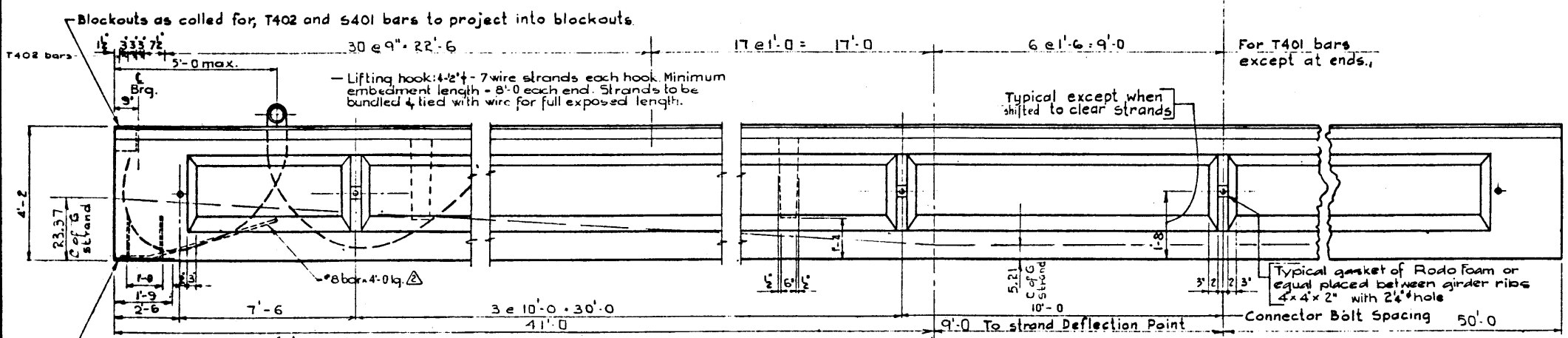


PLAN  
N.T.S.

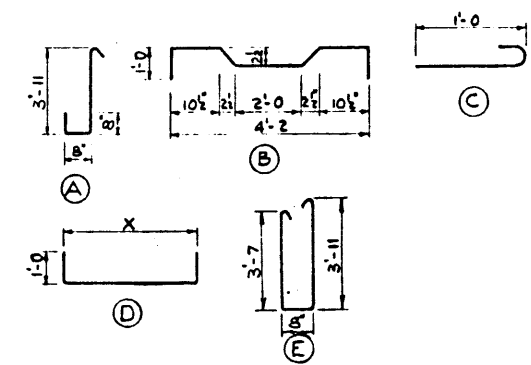
SKEW END  
Scale: 1/4" = 1'-0"

BAR LIST For Unskewed Girder						
BAR	SIZE	NO.	TYPE	LENGTH	WEIGHT	
D601	6	8	D	4'-2"	6'-2"	74
D602	6	4	D	5'-0"	7'-0"	42
S301	3	320	C		1'-5"	170
S401	4	21	str.		34'-0"	477
S402	4	120	B		6'-4"	508
S501	5	242	str.		4'-9"	1,199
T401	4	214	A		5'-8"	810
T402	4	16	E		9'-0"	96
T601	6	24	str.		3'-8"	132
						TOTAL Lbs: 3,508



ELEVATION  
N.T.S.

BAR TYPES  
(All bar dimensions are out to out)



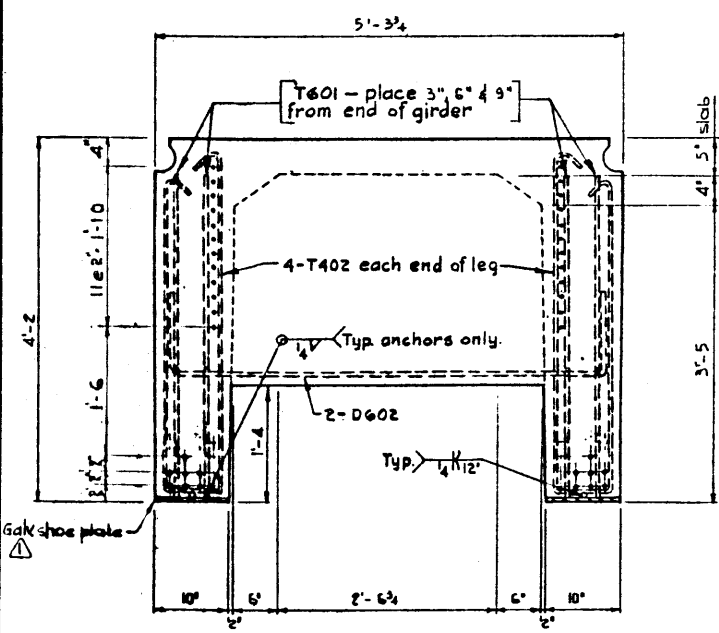
GENERAL NOTES :

- DESIGN**  
A.A.S.H.O. 1965 Specification.
- Loading: 0.90 of one wheel line of an H5.20-44 truck plus full dead load plus 2% wearing surface.
- MATERIALS**  
Prestressing steel is A.S.T.M. A-416 7-wire strand.  
Concrete shall be of standard weight aggregate with a max. size of 3/4". Minimum compressive strength shall be 5000 P.S.I. at 28 days.  
Entrained air shall be between 5% and 8%.

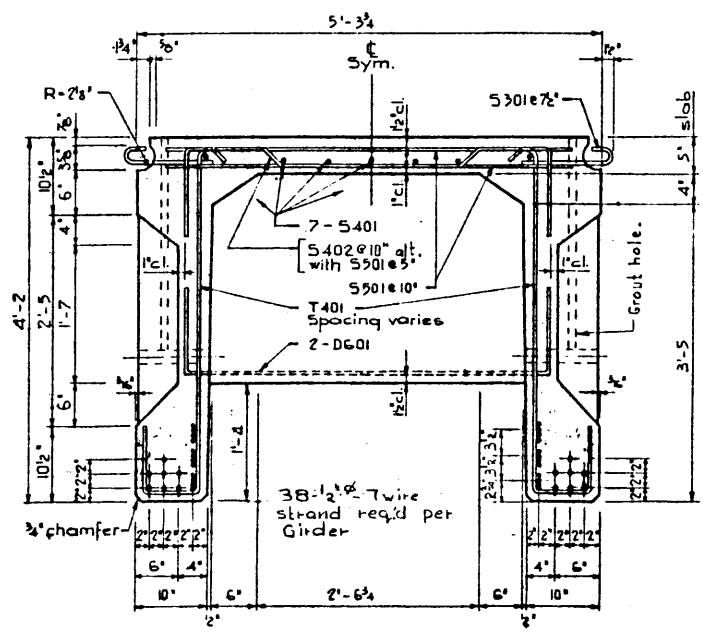
- FABRICATION**
- Reinforcement diameters of all bends shall conform to the recommended sizes and all hooks, unless otherwise noted, shall conform to the recommended sizes detailed in the A.C.I. Manual of Standard Practice for Detailing Reinforced Concrete Structures.

- Prestressing steel: Initial tensioning load = 25.2% Strand Design Load = 19.8% Strand
- Concrete must attain 4000 p.s.i. compressive strength before the prestressing force is transferred.
- Galvanizing shall be in accordance with A.S.T.M. Spec. A153.
- Units are to conform to the requirements of the Alberta Bridge Branch Specification B190-64 for the Manufacture of Prestressed Concrete Bridge Units.

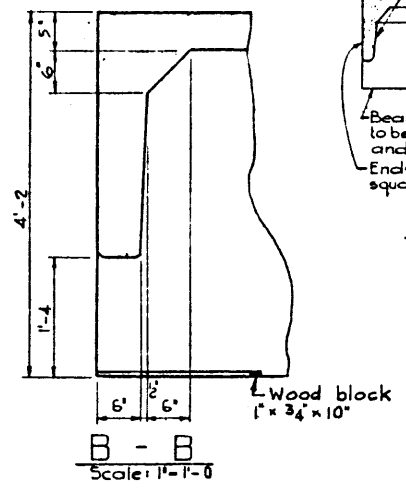
- ERECTION**
- Lifting force at each hook must be vertical at all times.
  - Girder surface must be level at all times.



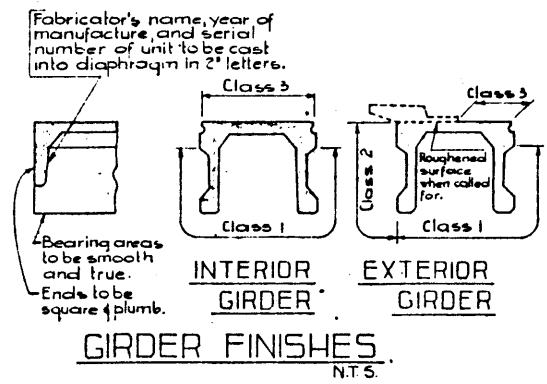
END VIEW  
Scale: 1/2" = 1'-0"



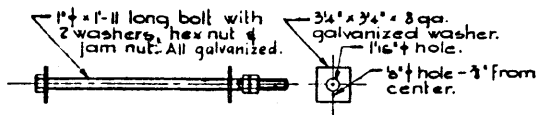
A - A  
Scale: 1/2" = 1'-0"



B - B  
Scale: 1/2" = 1'-0"



GIRDER FINISHES  
N.T.S.



CONNECTOR BOLT

NO.	DATE	DESCRIPTION	BY
1	Mar 3, 69	Shoe Plate Anchor Bar	T.B.
2	Nov 19/70	1\"/>	

*Design not checked*

PRESTRESSED CONCRETE  
100'-0" TYPE-FC-50 GIRDER

GOVERNMENT OF THE PROVINCE OF ALBERTA DEPARTMENT OF HIGHWAYS BRIDGE BRANCH, EDMONTON			
FILE NO.	HWY. NO.	DWS. NO.	
LOCATION	SCALE	SHEET OF 5-963	
REVISIONS			

DESIGNED BY: T. BELKE DATE: FEBRUARY 1968  
 CHECKED BY: M. FLUPIAK DATE: FEBRUARY 1968