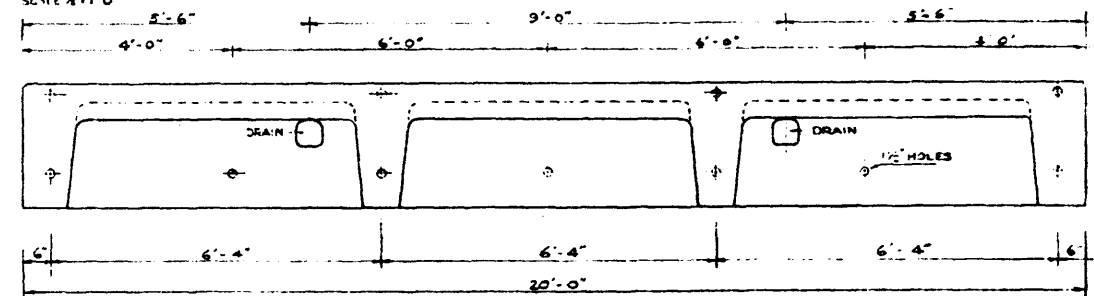
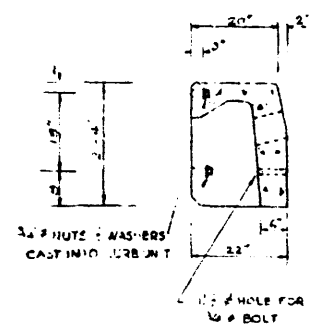


**PLAN**  
SCALE 1/2" = 1'-0"

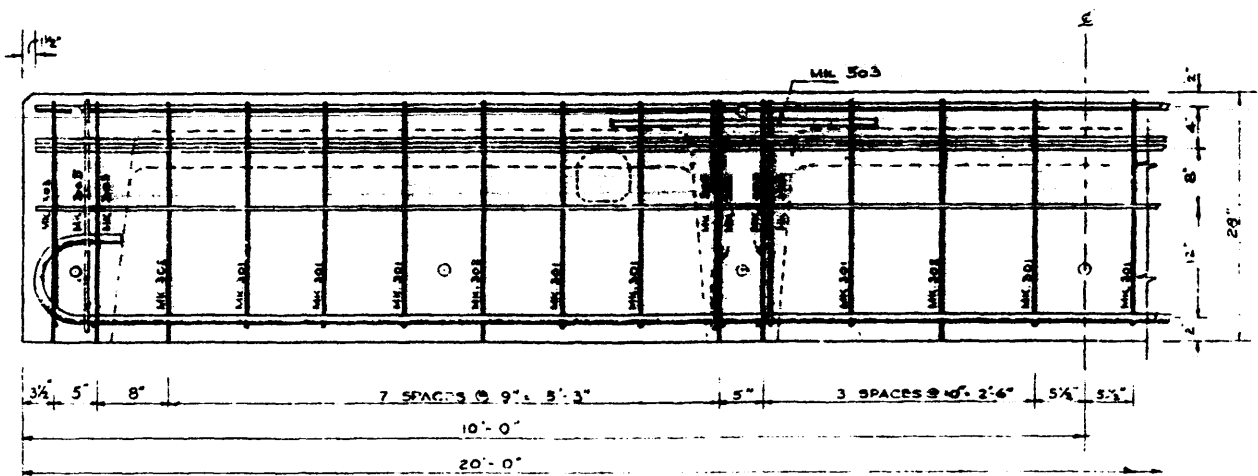
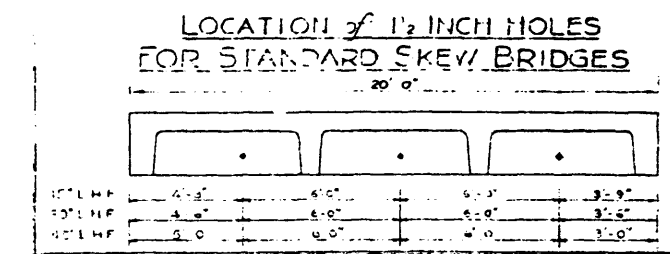


**ELEVATION**  
SCALE 1/2" = 1'-0"

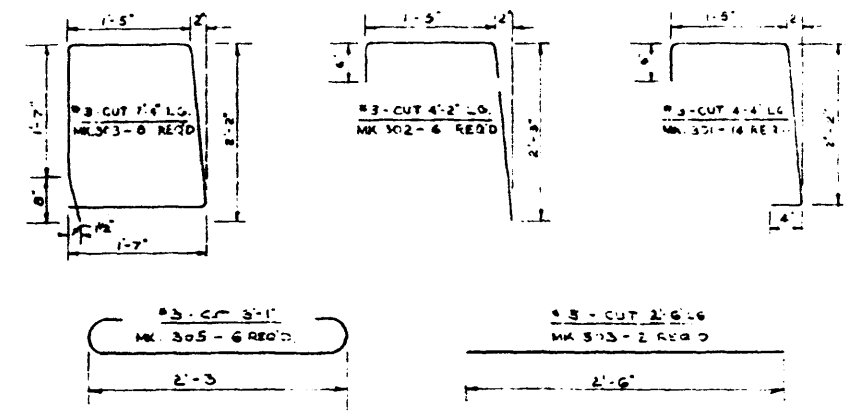
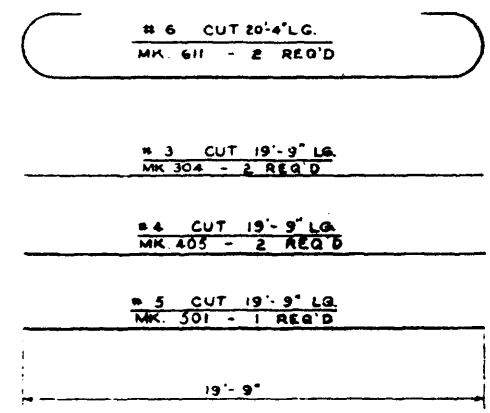
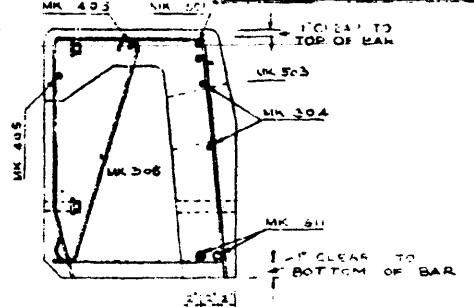


**STEEL SCHEDULE**  
(ALL DIMENSIONS OUT TO OUT)

20 FT. STANDARD CURB UNIT LFWT							
MARK	NO	SIZE	LENGTH	SKETCH	OUT TO OUT DISTANCE	WEIGHT	REMARKS
301	14	#3	4'-4"			22.8	
302	6	#3	4'-2"			9.4	
303	8	#3	7'-4"			22.0	
304	2	#3	19'-9"	STR	19'-9"	14.9	
305	6	#3	3'-1"		2'-3"	7.0	
405	2	#4	19'-9"	STR	19'-9"	26.4	
501	1	#5	19'-9"	STR	19'-9"	20.6	
503	2	#5	2'-6"	STR	2'-6"	5.2	
611	2	#6	20'-4"		19'-9"	61.2	
WEIGHT PER UNIT						189.5	



**REINFORCING ASSEMBLY**  
SCALE 1" = 1'-0"



**BAR BENDING DETAILS**  
NOT TO SCALE

**STANDARD TYPE C  
PRECAST CONCRETE CURB UNIT  
(INTRODUCED IN 1955)**

GOVERNMENT OF THE PROVINCE OF ALBERTA  
DEPARTMENT OF HIGHWAYS  
BRIDGE BRANCH, EDMONTON

FILE NO.	DEPT. NO.	SHEET NO.
LOCATION	SCALE	5-972
STREAM	SHEET	OF