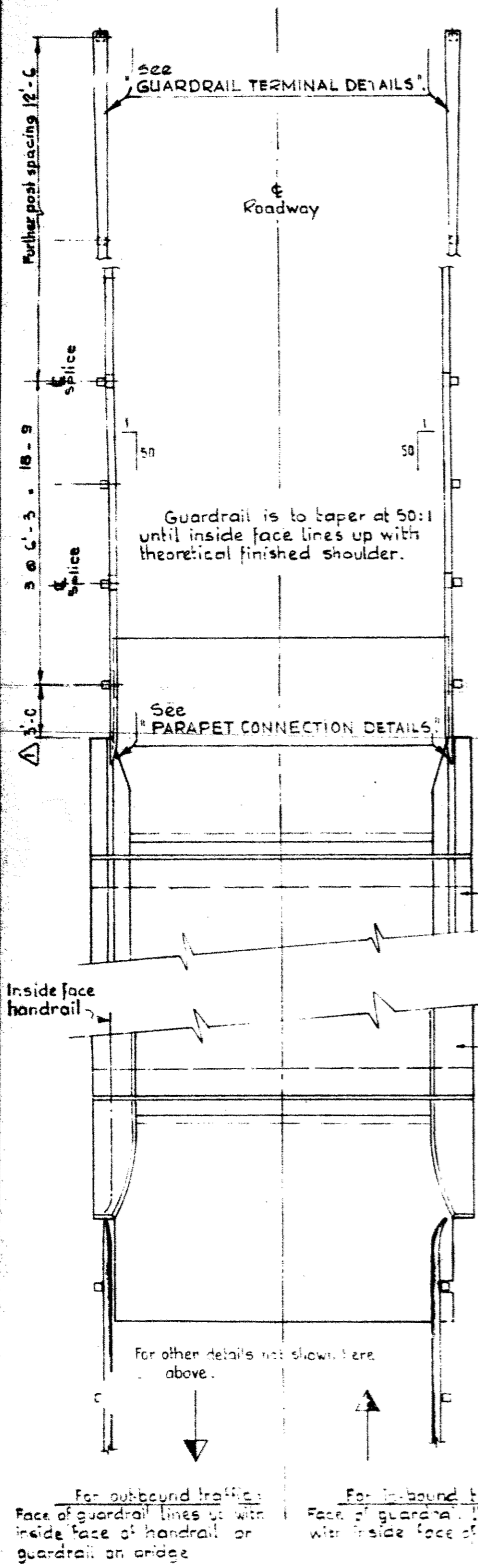
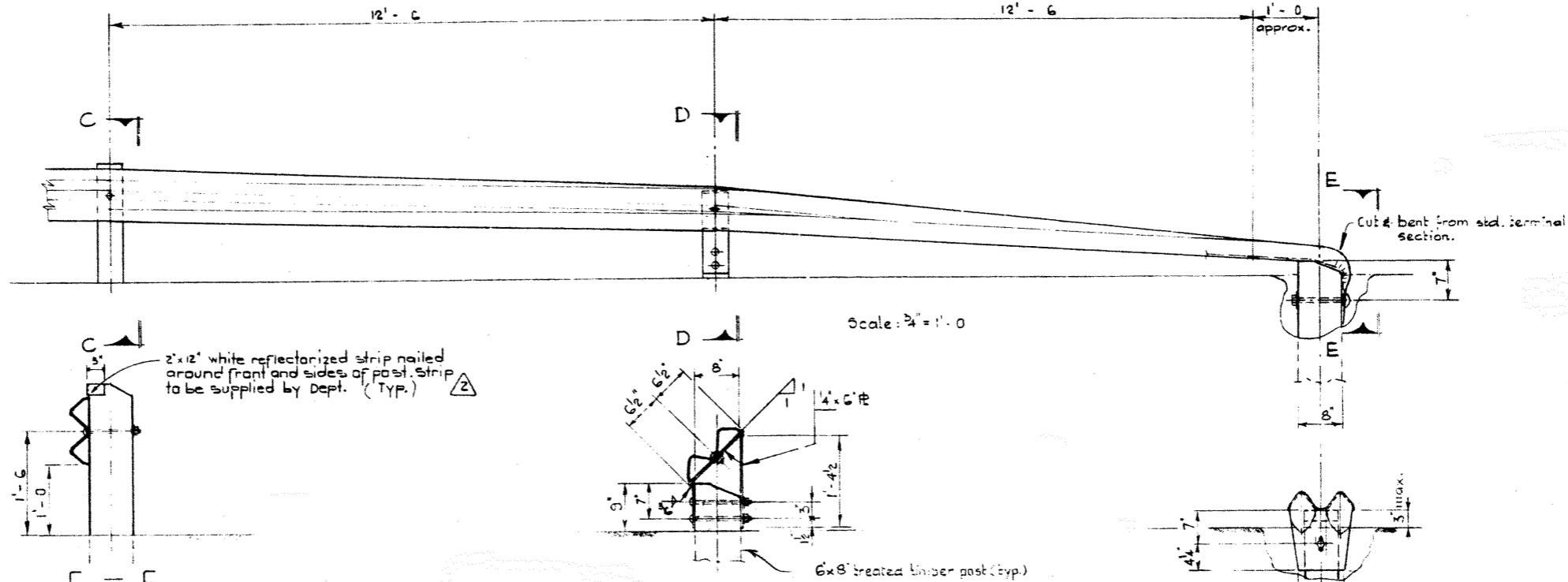


DESIGNED BY R. W. Kormelisen DATE Aug. 19 58
 CHECKED BY P. Széts DATE Aug. 19 58



GUARDRAIL AT BRIDGE ENDS

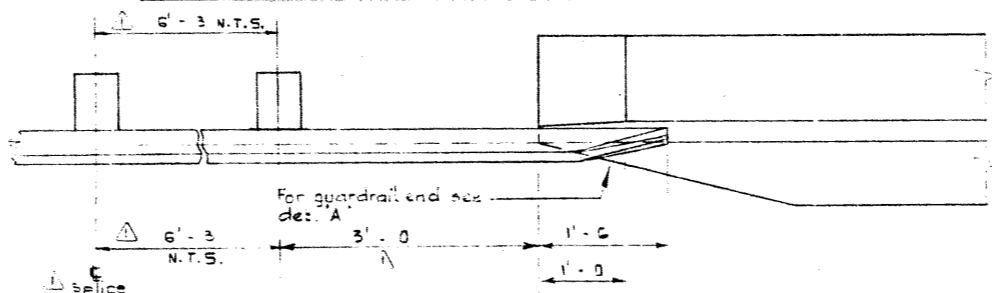
N.T.S.



GUARDRAIL TERMINAL DETAIL

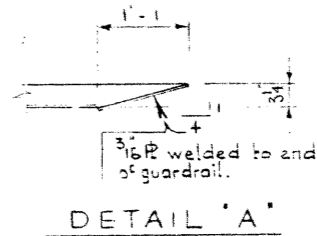
Scale: 1" = 1'-0"

Note: See Dwg. S-982 for Guardrail to tubetype Bridge Rail Connection.



PARAPET CONNECTION DETAILS

Scale: 1" = 1'-0"



DETAIL 'A'

GENERAL NOTES

- Rail sections to be lapped in direction of traffic.
- Normal guardrail height of 1'-6" to be transitioned over 25' to meet bridgerail or parapet connection.

SUPERSEDED

GUARDRAIL AT BRIDGE APPROACHES

GOVERNMENT OF THE PROVINCE OF ALBERTA
 DEPARTMENT OF HIGHWAYS
 BRIDGE BRANCH, EDMONTON

S-974-69