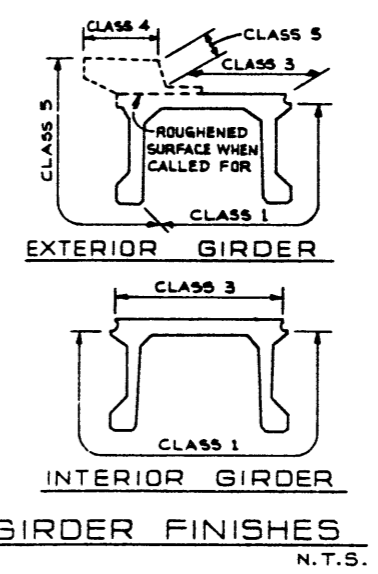
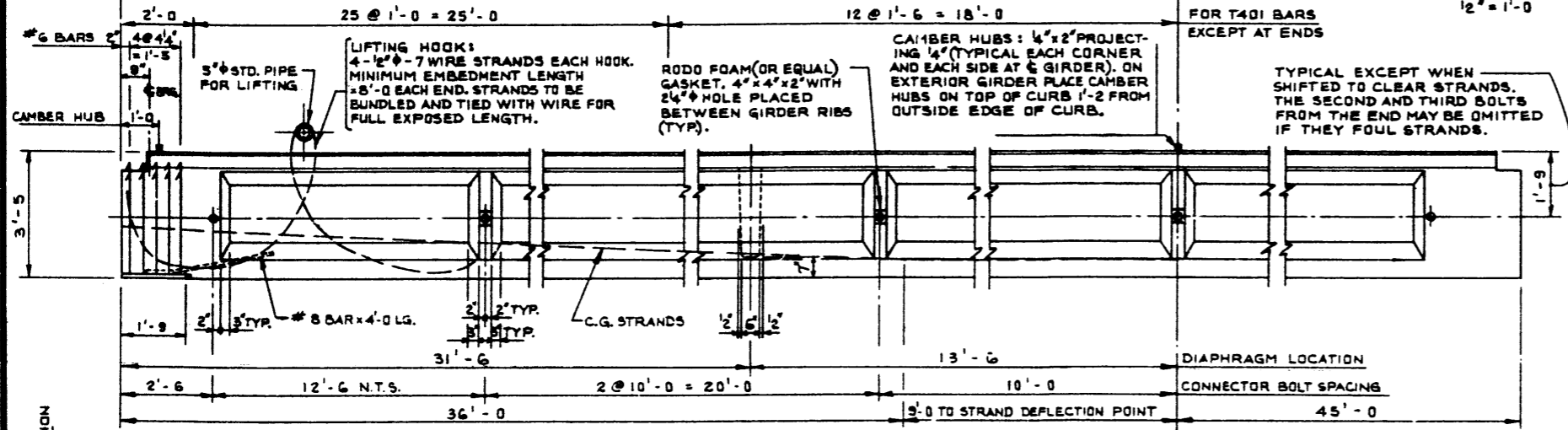


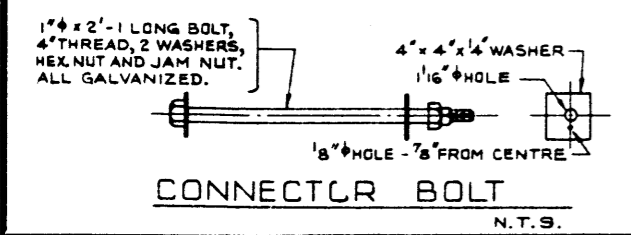
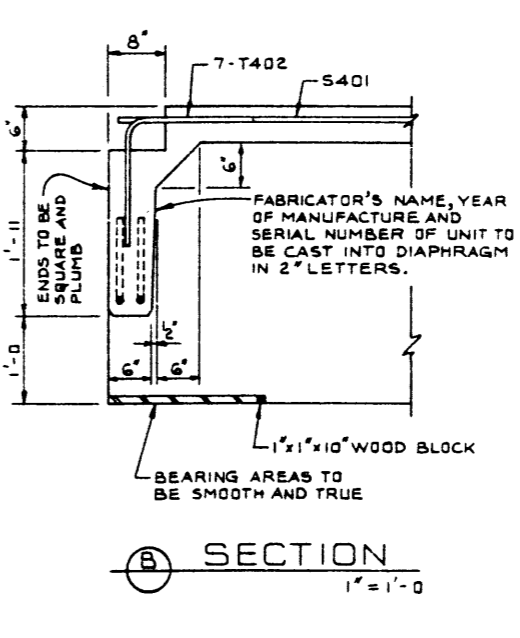
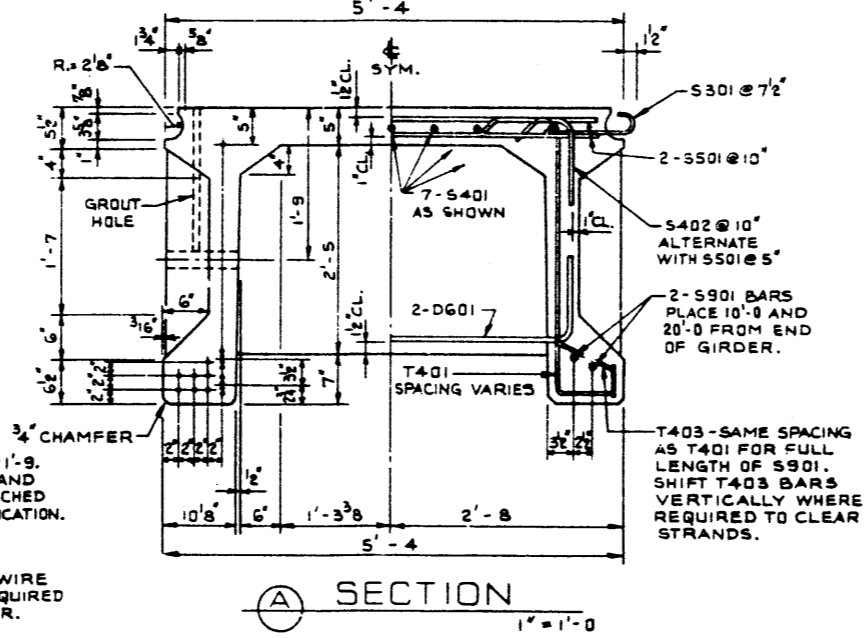
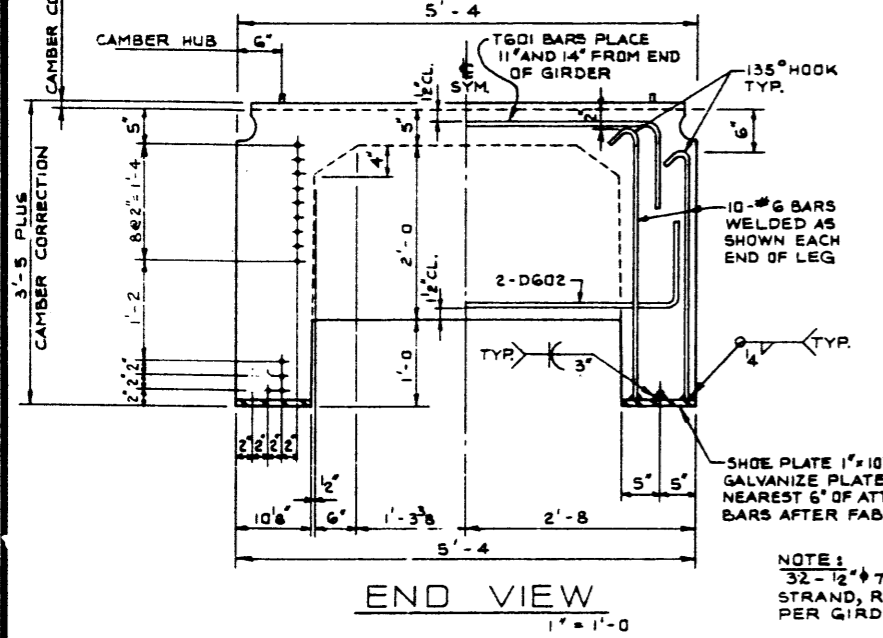
**BAR LIST: FOR UNSKEWED GIRDER**

MARK	SIZE	NO.	TYPE	X	Y	LENGTH	WEIGHT
S 301	3	284	C			1'-0"	160
S 401	4	21	STR.			30'-8"	430
S 402	4	186	B			6'-4"	448
S 501	5	214	STR.			4'-9"	1060
T 401	4	158	A			4'-8"	468
T 402	4	14	E			3'-0"	28
T 601	6	4	D	4'-6"		6'-6"	39
D 601	6	4	D	4'-2"		6'-2"	37
D 602	6	4	D	5'-0"		7'-0"	42
T 403	4	118	F			1'-5"	112
S 901	9	4	STR.			60'-8"	816

TOTAL LBS : 3,640

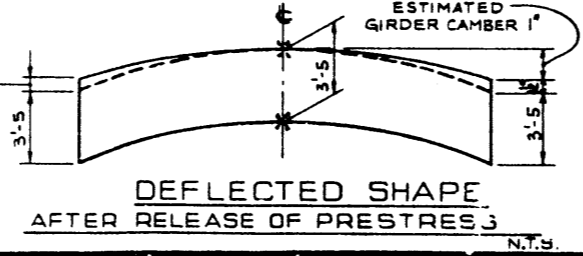


- GENERAL NOTES:**
- DESIGN:**
- A.A.S.H.O. 1989 SPECIFICATION EXCEPT ALLOWABLE FINAL CONCRETE STRESS = 389 P.S.I. IN TENSION.
  - LOADING: 8.19 OF ONE WHEEL LINE OF AN HS 20-44 TRUCK PLUS FULL DEAD LOAD PLUS 2 1/2" WEARING SURFACE.
- MATERIALS:**
- LIGHTWEIGHT AGGREGATE SHALL CONFORM TO THE REQUIREMENTS OF A.S.T.M. SPECIFICATION C398 WITH MAXIMUM AGGREGATE SIZE 3/8". MINIMUM 28 DAY COMPRESSIVE STRENGTH TO BE 3,888 P.S.I. UNIT WEIGHT OF THE CONCRETE SHALL BE 120 LBS. PER CUBIC FOOT PLUS OR MINUS 3% IN THE PLASTIC STATE. UNTRAINED AIR SHALL BE NOT LESS THAN 3%.
  - PRESTRESSING STEEL SHALL BE 1/2" DIAMETER - 7 WIRE 270 K STRAND.
- FABRICATION:**
- GIRDS SHALL CONFORM TO THE REQUIREMENTS OF THE ALBERTA BRIDGE BRANCH SPECIFICATION S 190-64 FOR THE MANUFACTURE OF PRESTRESSED CONCRETE BRIDGE UNITS.
  - REINFORCEMENT: DIAMETERS OF ALL BENDS SHALL CONFORM TO THE RECOMMENDED MINIMUMS AND ALL HOOKS, UNLESS OTHERWISE NOTED, SHALL CONFORM TO THE RECOMMENDED SIZES DETAILED IN THE A.C.I. MANUAL OF STANDARD PRACTICE FOR DETAILING REINFORCED CONCRETE STRUCTURES.
  - PRESTRESSING STEEL: INITIAL TENSIONING LOAD = 28.91 K/STRAND DESIGN LOAD = 21.91 K/STRAND
  - CONCRETE MUST ATTAIN 4500 P.S.I. COMPRESSIVE STRENGTH BEFORE THE PRESTRESSING FORCE IS TRANSFERRED.
  - GALVANIZING SHALL BE IN ACCORDANCE WITH A.S.T.M. SPECIFICATION A 153.
  - SHEAR KEYS AND BLOCKOUTS SHALL BE SANDBLAST ROUGHENED BY THE GIRDER FABRICATOR TO THE APPROVAL OF THE ENGINEER.
  - RIBS AND CONNECTOR BOLT HOLES SHALL BE OMITTED ON OUTSIDE LEGS OF EXTERIOR GIRDS.
  - EXTERIOR GIRDER DIAPHRAGMS SHALL BE SPACED AT 12'-6" MAXIMUM.
  - CONNECTOR BOLTS, WASHERS, HEX NUTS, JAM NUTS AND RODFOAM GASKETS SHALL BE SUPPLIED WITH THE GIRDS.
- SECTION:**
- LIFTING FORCE AT EACH HOOK MUST BE VERTICAL AT ALL TIMES. GIRDER SURFACE MUST BE LEVEL AT ALL TIMES.



**NOTE:**  
 32-1/2" x 7 WIRE STRAND, REQUIRED PER GIRDER.

CAMBER CORRECTION VARIES FROM 0" AT CENTRE TO 1 1/2" AT ENDS. CAMBER CORRECTION IS SUCH AS TO PRODUCE A GIRDER CAMBER EQUAL TO THE SPAN/1000 AND MAY BE VARIED TO SUIT GRADELINE.



APPROVED		PROVINCE OF ALBERTA DEPARTMENT OF HIGHWAYS AND TRANSPORT BRIDGE BRANCH	
E.B.J.		PRESTRESSED CONCRETE 90'-0" TYPE FC-41" GIRDER LIGHTWEIGHT	
DESIGNED BY E.B.J.		DATE FEB. 73	
DRAWN BY V.G.B.		DATE APR. 73	
CHECKED BY		DATE	
DATE		DATE	
REVISIONS		DATE	
NO.	DATE	DESCRIPTION	BY
1	25/2/73	REDRAWN FROM S-977	E.B.J.

DATE: 29/2/73

CHIEF BRIDGE ENGINEER

DESIGNED BY: E.B.J. DRAWN BY: V.G.B. CHECKED BY: DATE: FEB. 73 APR. 73

STREAM: LOCATION: HWY. NO.: SCALE: FILE NO.: SHEET: OF: 9-977-73