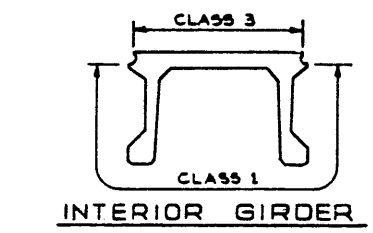
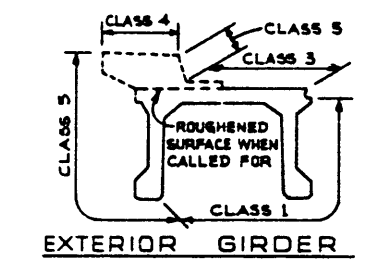


BAR LIST: FOR UNSKEWED GIRDER									
MARK	SIZE	NO.	TYPE	X	Y	LENGTH	WEIGHT		
S 301	3	302	C			1'-6"	170		
S 401	4	21	STR.			32'-4"	454		
S 402	4	114	B			6'-4"	452		
S 501	5	226	STR.			4'-8"	1128		
T 401	4	158	A			4'-8"	453		
T 402	4	14	E			2'-8"	28		
T 601	6	4	D	4'-6"		6'-6"	33		
D 601	6	6	D	4'-2"		6'-2"	96		
D 602	6	4	D	5'-0"		7'-8"	42		
T 403	4	118	F			1'-5"	112		
S 901	9	4	STR.			60'-8"	616		

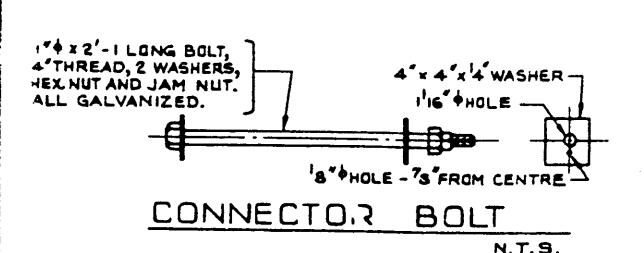
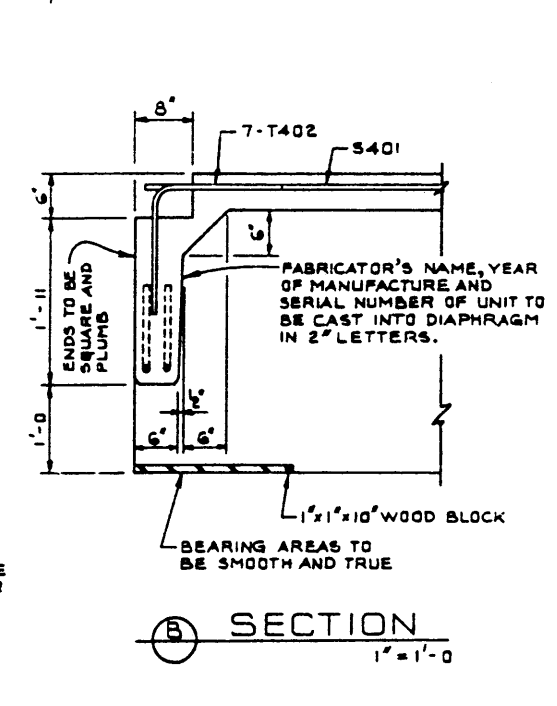
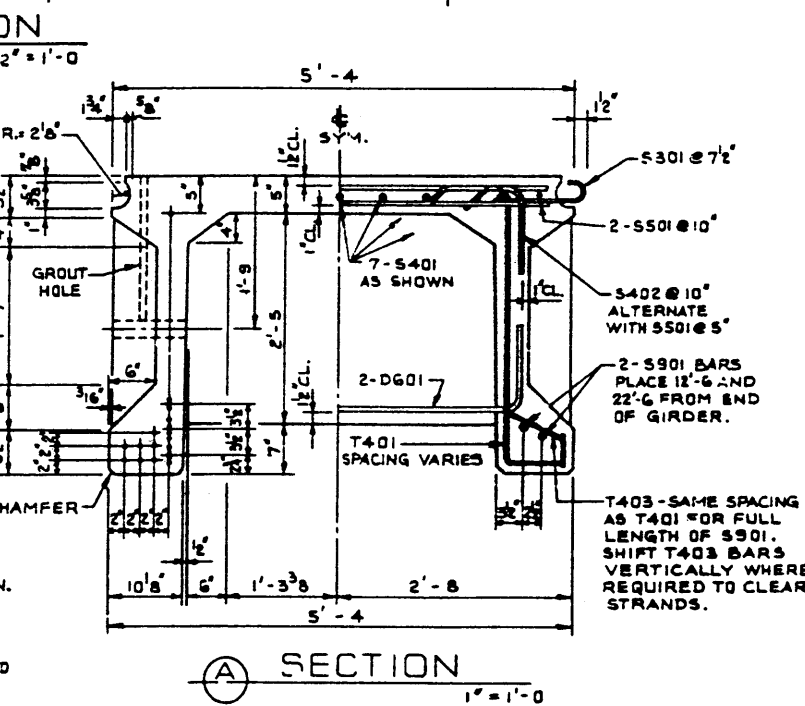
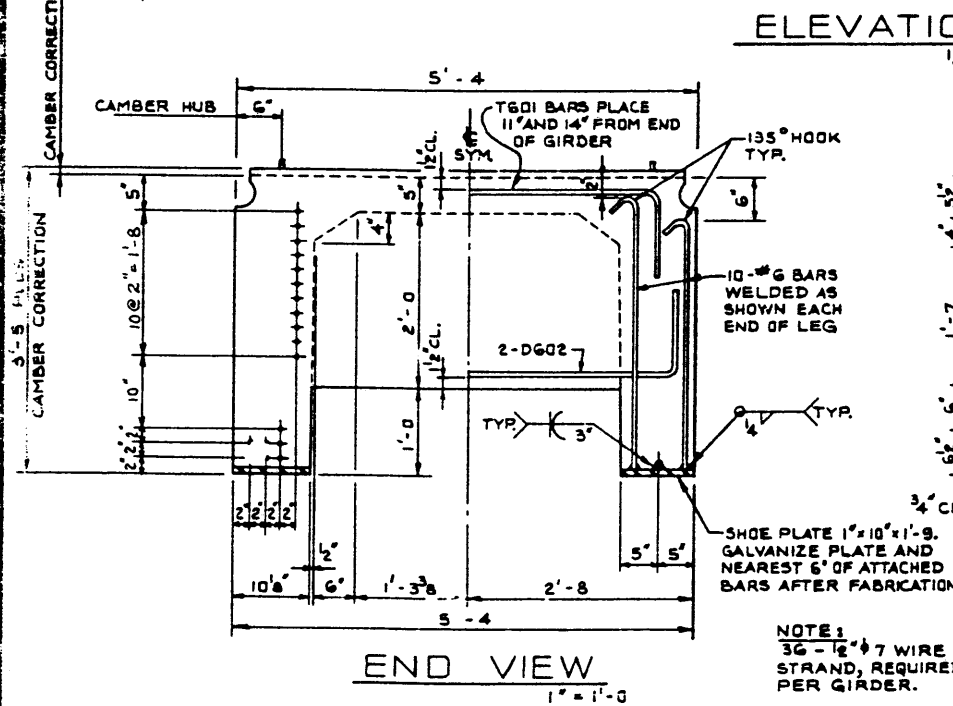
TOTAL LBS : 3,812

GENERAL NOTES:

- DESIGN:
- A.A.S.H.O. 1994 SPECIFICATION EXCEPT ALLOWABLE FINAL CONCRETE STRESS = 300 P.S.I. IN TENSION.
 - LOADING: 0.90 OF ONE WHEEL LINE OF AN HS 20-44 TRUCK PLUS FULL DEAD LOAD PLUS 2" WEARING SURFACE.
- MATERIALS:
- LIGHTWEIGHT AGGREGATE SHALL CONFORM TO THE REQUIREMENTS OF A.S.T.M. SPECIFICATION C88 WITH MAXIMUM AGGREGATE SIZE 3/8". MINIMUM 28 DAY COMPRESSIVE STRENGTH TO BE 5,000 P.S.I. UNIT WEIGHT OF THE CONCRETE SHALL BE 120 LBS. PER CUBIC FOOT PLUS OR MINUS 5% IN THE PLASTIC STATE. ENTRAINED AIR SHALL BE NOT LESS THAN 5%.
 - PRESTRESSING STEEL SHALL BE 1/2" DIAMETER - 7 WIRE 270 K STRAND.
- FABRICATION:
- GIRDERS SHALL CONFORM TO THE REQUIREMENTS OF THE ALBERTA BRIDGE BRANCH SPECIFICATION 87-1-1 FOR THE MANUFACTURE OF PRESTRESSED CONCRETE BRIDGE UNITS.
 - REINFORCEMENT: DIAMETERS OF ALL BARS SHALL CONFORM TO THE RECOMMENDED MINIMUMS AND ALL BARS, UNLESS OTHERWISE NOTED, SHALL CONFORM TO THE RECOMMENDED SIZES DETAILED IN THE A.C.I. MANUAL OF STANDARD PRACTICE FOR DETAILING REINFORCED CONCRETE STRUCTURES.
 - PRESTRESSING STEEL: INITIAL TENSIONING LOAD = 28.51 K/STRAND DESIGN LOAD = 21.56 K/STRAND
 - CONCRETE MUST ATTAIN 4700 P.S.I. COMPRESSIVE STRENGTH BEFORE THE PRESTRESSING FORCE IS TRANSFERRED.
 - GALVANIZING SHALL BE IN ACCORDANCE WITH A.S.T.M. SPECIFICATION A 153.
 - SHEAR KEYS AND BLOCKOUTS SHALL BE SANDBLAST ROUGHENED BY THE GIRDER FABRICATOR TO THE APPROVAL OF THE ENGINEER.
 - RIBS AND CONNECTOR BOLT HOLES SHALL BE OMITTED ON OUTSIDE LEGS OF EXTERIOR GIRDERS.
 - EXTERIOR GIRDER DIAPHRAGMS SHALL BE SPACED AT 17'-4" MAXIMUM.
 - CONNECTOR BOLTS, WASHERS, HEX NUTS, JAM NUTS AND RODOFOAM GASKETS SHALL BE SUPPLIED WITH THE GIRDERS.
- SECTION:
- LIFTING FORCE AT EACH HOOK MUST BE VERTICAL AT ALL TIMES. GIRDER SURFACE MUST BE LEVEL AT ALL TIMES.

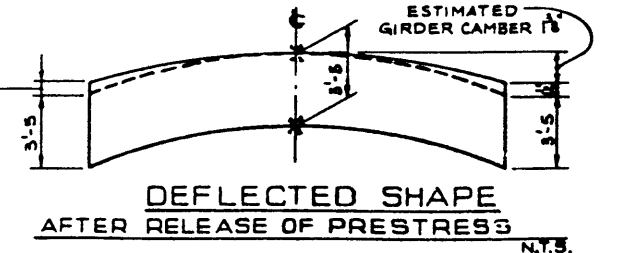


GIRDER FINISHES N.T.S.



NOTE: 36 - 1/2" x 7 WIRE STRAND, REQUIRED PER GIRDER.

CAMBER CORRECTION VARIES FROM 0" AT CENTRE TO 1/2" AT ENDS. CAMBER CORRECTION IS SUCH AS TO PRODUCE A GIRDER CAMBER EQUAL TO THE SPAN/1000 AND MAY BE VARIED TO SUIT GRADELINE.



APPROVED		PROVINCE OF ALBERTA DEPARTMENT OF HIGHWAYS AND TRANSPORT BRIDGE BRANCH	
E.B.J. REDRAWN FROM S-979		PRESTRESSED CONCRETE 95'-0" TYPE FC-41' GIRDER LIGHTWEIGHT	
REVISIONS		DATE: 9/13/73	
DESIGNED E.B.J.	DRAWN BY V.G.B.	DATE FEB. 73	CHECKED BY [Signature]
DATE APR. 73	LOCATION	SCALE 1" = 1'-0"	FILE NO.
SHEET		S-979-73	