

ELEVATION
1" = 1'-0"

END POST - TYPE 'I'

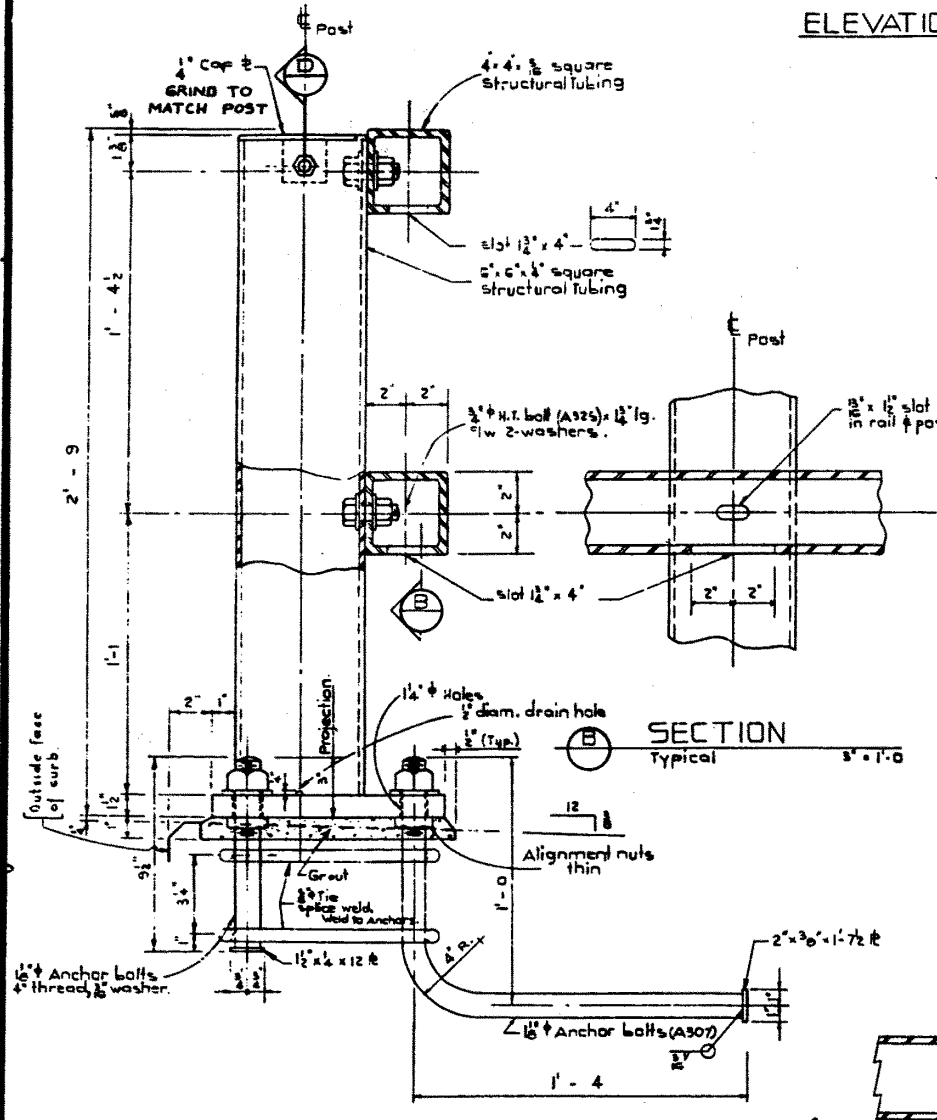
DETAIL - END POST - TYPE 'II'
To be supplied only when specified.



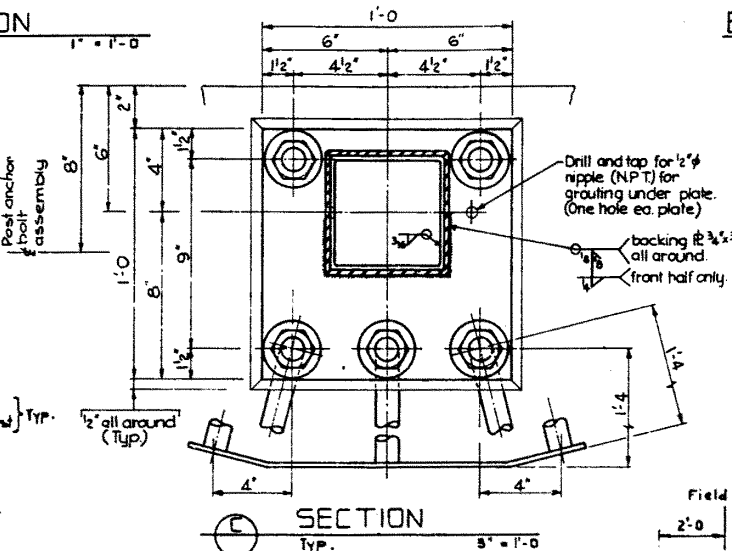
GENERAL NOTES

FABRICATION
Design Standard 1965 A.A.S.M.O. Specification (Traffic Rail).
Fabrication is to be in accordance with Bridge Branch Specification B 187-64.
All steel shall conform to C.S.A. G40.12 or A.S.T.M. - A 36 except structural tubing to conform to A.S.T.M. A 5008. Anchor bolts to meet A.S.T.M. A 307.
All materials shall be hot dip galvanized after fabrication in accordance with the requirements of the following A.S.T.M. Specifications:
Railing and posts A 123
Bolts and anchor bolt assemblies A 153
Bridge to be considered level for bridgerail fabrication unless the roadway grade exceeds 1%. Adjustment for roadway grade, if required, is to be made by varying the 4" dimension as shown on "Rail End Elevation".
Post base plate to be placed on bevel if roadway grade exceeds 2%.
Tube sections shall be fabricated in the configurations shown in "Tube Section Types".

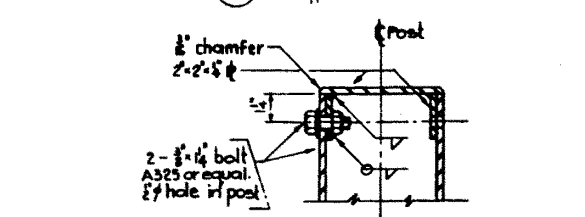
ERECTION
Tightening of Rail Bolts:
Top rail bolts may be tightened from the head into the post. Bottom rail bolts may be tightened through the 1 3/4" x 4" slot under the rail, using a 15" angled or offset box end wrench suitably bent and extended to achieve the required 1/2 turn of the nut from snug tight.
All posts to be vertical.
All dimensions are measured parallel to top of curb and along centerline of post anchor bolt assemblies.
Line and elevation of rail to be as shown.



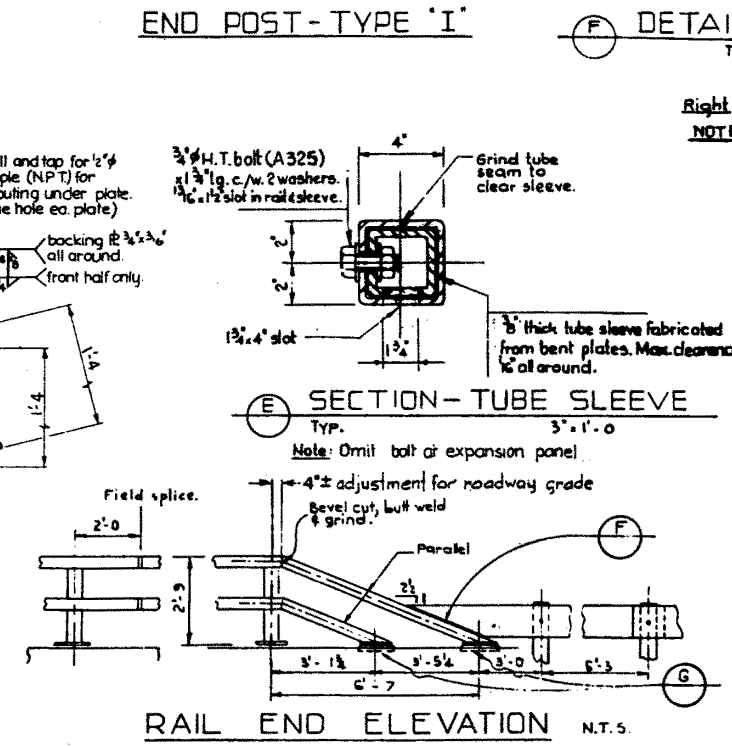
A SECTION - POST ANCHOR BOLT ASSEMBLY
TYPE "A" as shown.
TYPE "B" as shown except 2-2 bolts straight.
N.T.S.



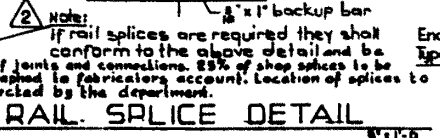
E SECTION - TUBE SLEEVE
Typ. 3'-1-0
Note: Omit bolt or expansion panel



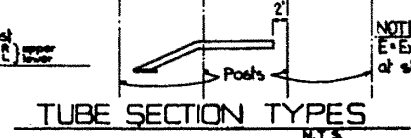
D SECTION - CAP
3'-1-0



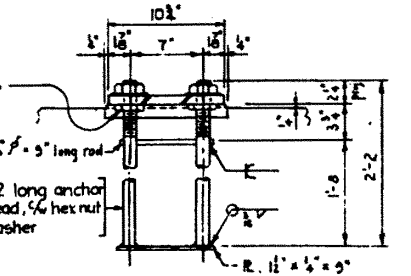
RAIL END ELEVATION N.T.S.



RAIL SPLICE DETAIL
1" = 1'-0"



TUBE SECTION TYPES
N.T.S.



G DETAIL - ANCHOR BOLT ASSEMBLY - TYPE 'C'

NO.	DATE	REVISIONS	BY

SUPERSEDED

APPROVED: *[Signature]*
CHIEF BRIDGE ENGINEER

2'-9 TUBE TYPE BRIDGERAIL

GOVERNMENT OF THE PROVINCE OF ALBERTA
DEPARTMENT OF HIGHWAYS
BRIDGE BRANCH, EDMONTON

FILE NO. _____ HWY. NO. _____ SHEET NO. _____ OF _____
LOCATION _____ SCALE _____ DRAWN BY _____ DATE _____

9-986-74