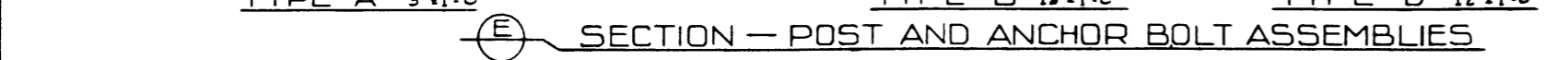
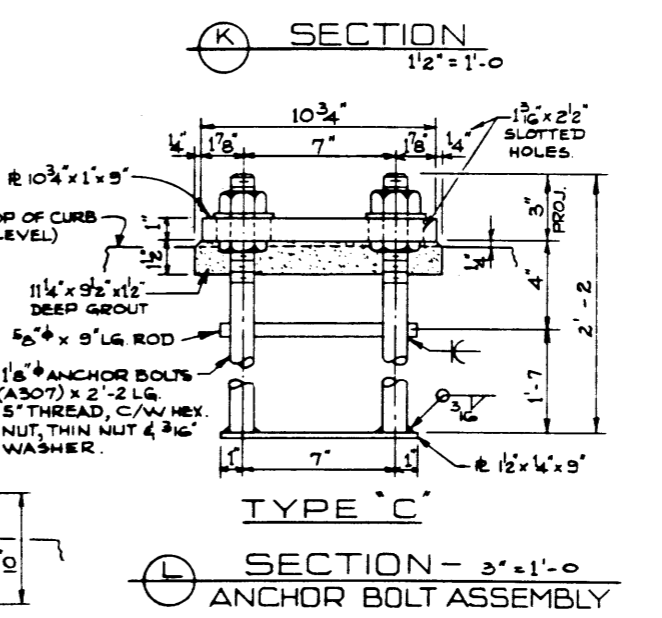
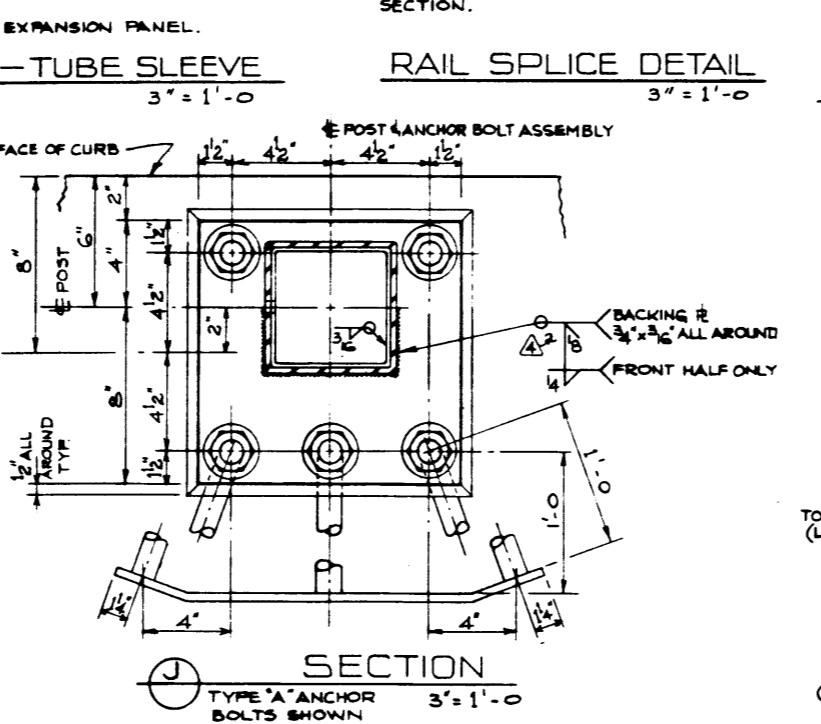
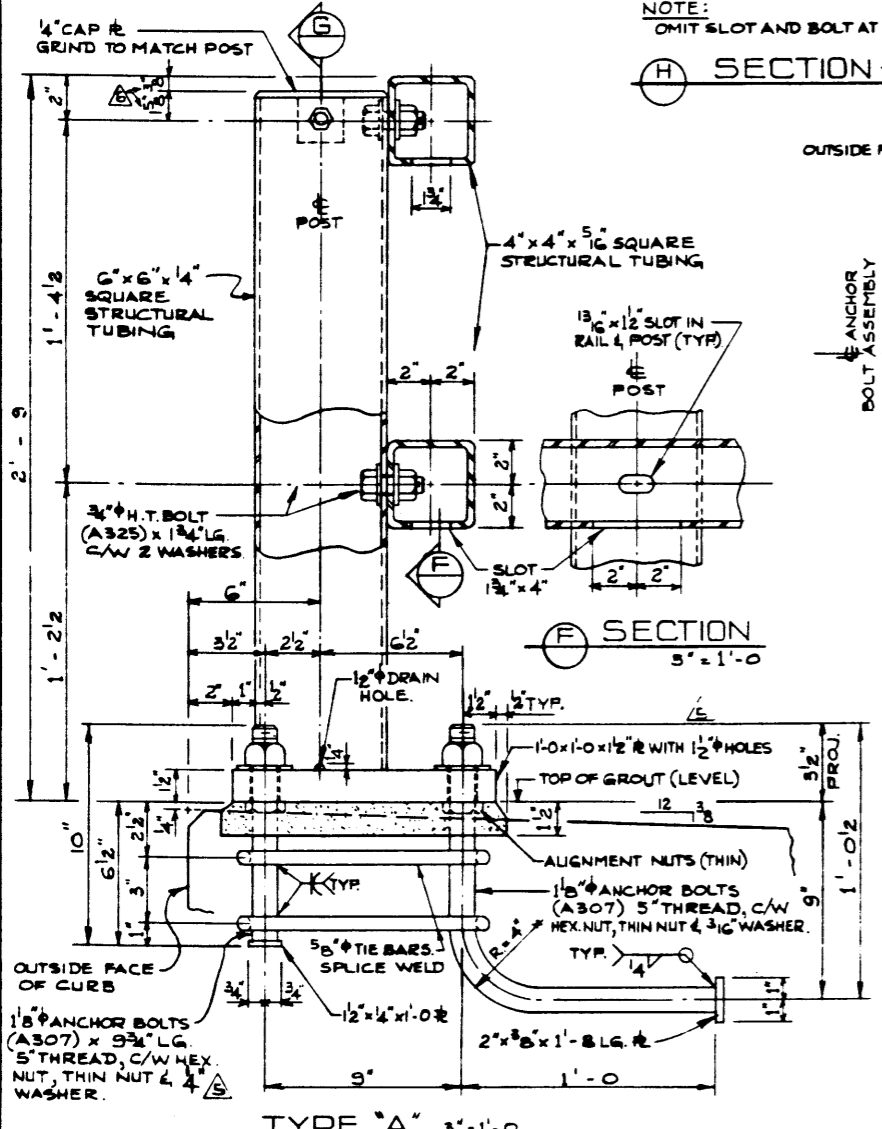
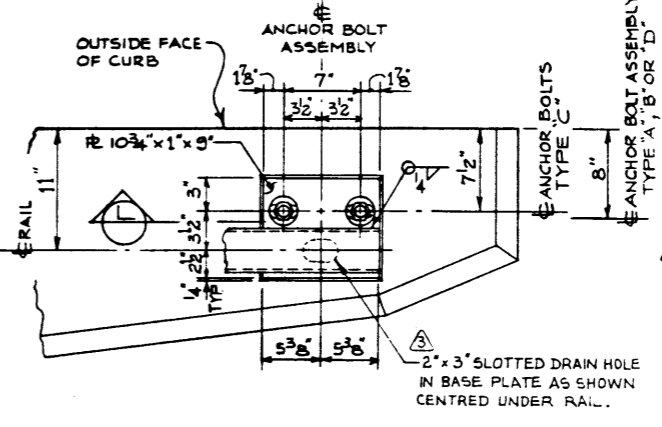
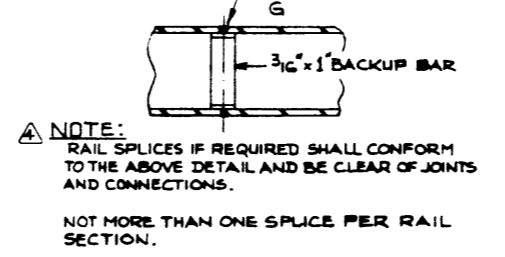
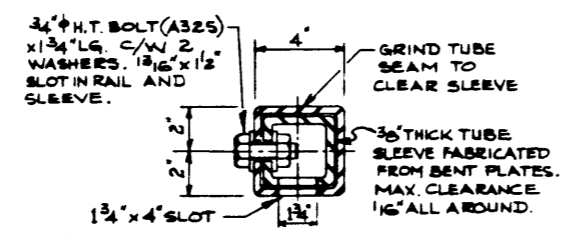
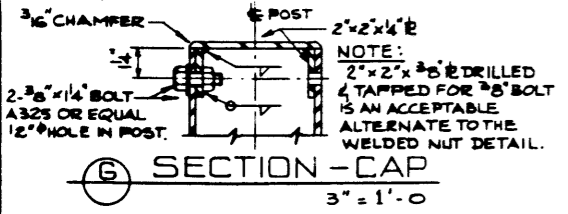
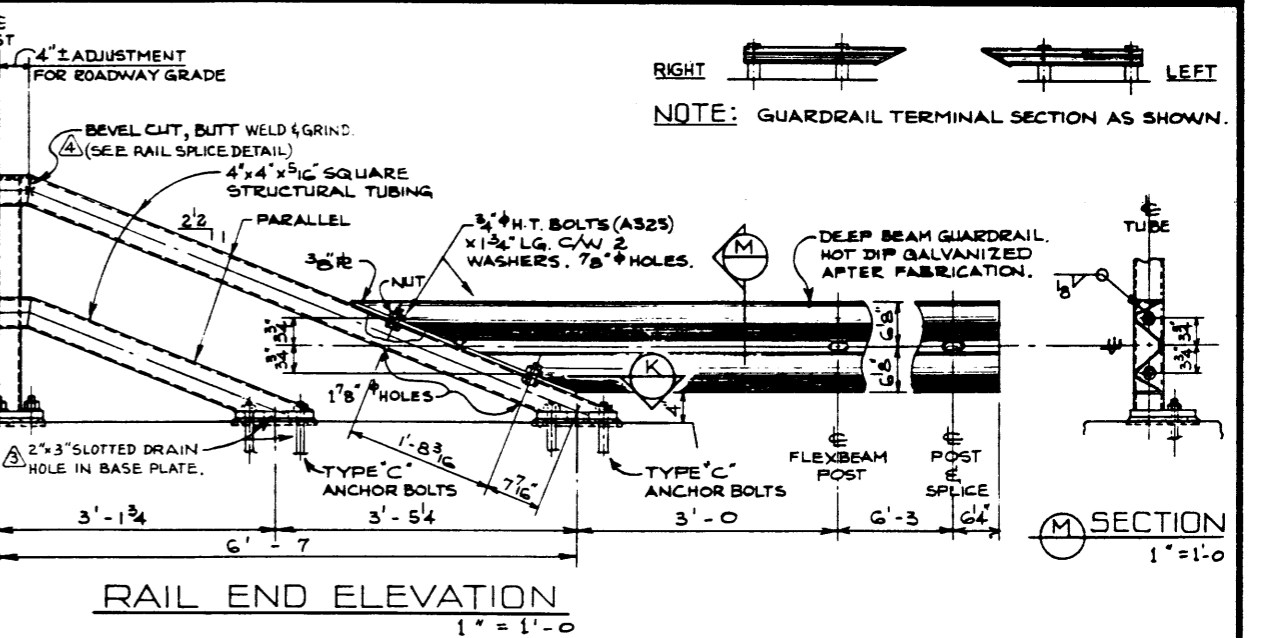
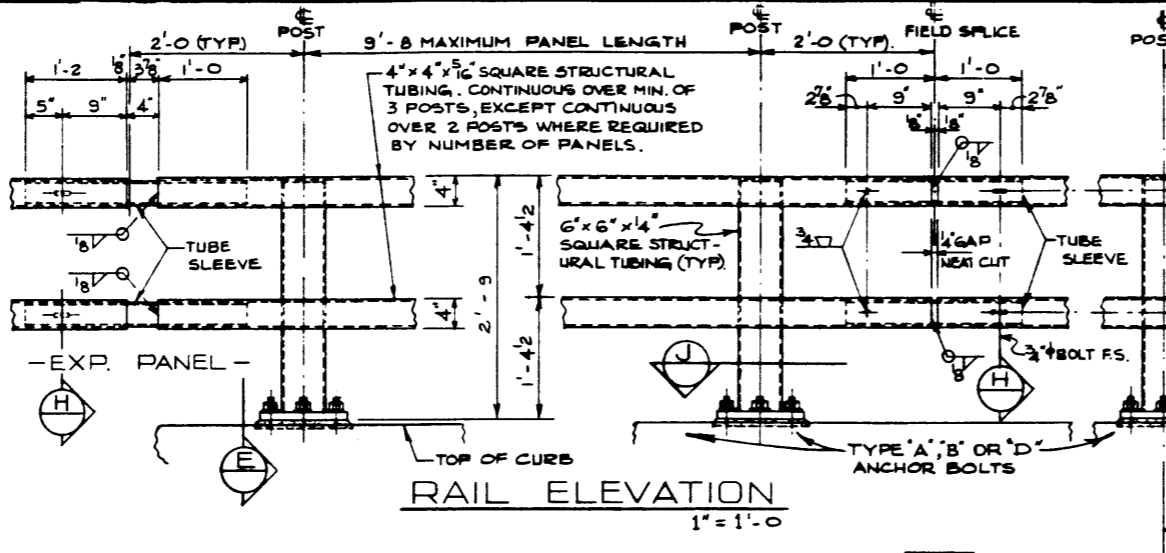


NOTE  
E = EXPANSION PANEL AT SLEEVE END.  
EP = END POST

**TUBE SECTION TYPES**  
N.T.S.



RIGHT LEFT

NOTE: GUARDRAIL TERMINAL SECTION AS SHOWN.

**GENERAL NOTES**

- FABRICATION**
- DESIGN STANDARD 1978 A.A.S.H.O. SPECIFICATION (TRAFFIC RAIL).
  - ALL REQUIREMENTS OF THE BRIDGE BRANCH SPECIFICATION FOR THE SUPPLY OF BRIDGERAIL (SPEC. NO. B 312 - JAN. 76) SHALL BE MET.
  - ALL STEEL SHALL CONFORM TO A.S.T.M. A 36 OR C.S.A. G40, 21 GRADE 44W, EXCEPT STRUCTURAL TUBING TO CONFORM TO A.S.T.M. A500B. ANCHOR BOLTS TO MEET A.S.T.M. A 307.
  - ALL ANCHOR BOLT ASSEMBLIES SHALL BE HOT DIP GALVANIZED AFTER FABRICATION IN ACCORDANCE WITH A.S.T.M. SPECIFICATION A153.
  - ALL WELDING SHALL CONFORM TO A.W.S. SPECIFICATION D1.1-74.
  - BRIDGE TO BE CONSIDERED LEVEL FOR BRIDGERAIL FABRICATION UNLESS THE ROADWAY GRADE EXCEEDS 1%. ADJUSTMENT FOR ROADWAY GRADE, IF REQUIRED, IS TO BE MADE BY VARYING THE 4\"/>
- ERECTION**
- TIGHTENING OF RAIL BOLTS: TOP RAIL BOLTS MAY BE TIGHTENED FROM THE HEAD INSIDE THE POST. BOTTOM RAIL BOLTS MAY BE TIGHTENED THROUGH THE 1 3/4\"/>

NO.	DATE	DESCRIPTION	BY
79 04 03		TOP POST DIMENSIONS WERE 5\"/>	
78 11 16		VENTILATION WASHER IN LINE	J.R.C.
DEC 19/77		NOTES AND BASE PLATE WELD	J.R.C.
OCT. 11/77		SLOTTED HOLE IN BASE R. ADDED	V.G.B.
MAY 26/76		GALVANIZING NOTE ADDED	R.G.G.
JUNE 10/75		REDRAWN FROM S-986-74	V.G.B.

APPROVED	 HIGHWAYS AND TRANSPORT BRIDGE BRANCH
2'-9 TUBE TYPE BRIDGERAIL	

DESIGNED	DRAWN BY	DATE	CHECKED BY	DATE	SYMBOL	LOCATION	REV. NO.	SCALE	FILE NO.	SHEET	DRAW. NO.
C.W.P.	V.G.B.	JUNE 10/75						SHOWN		5	S-986-75