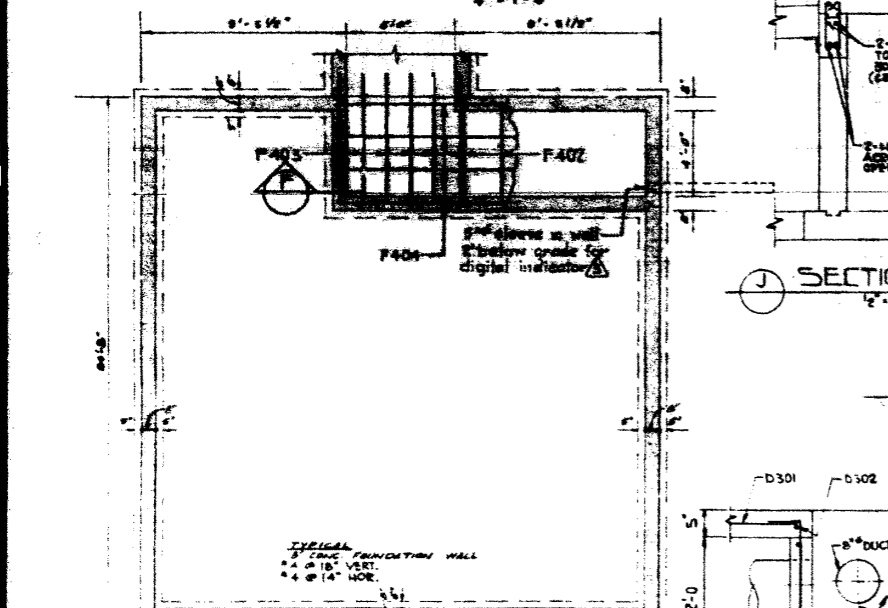
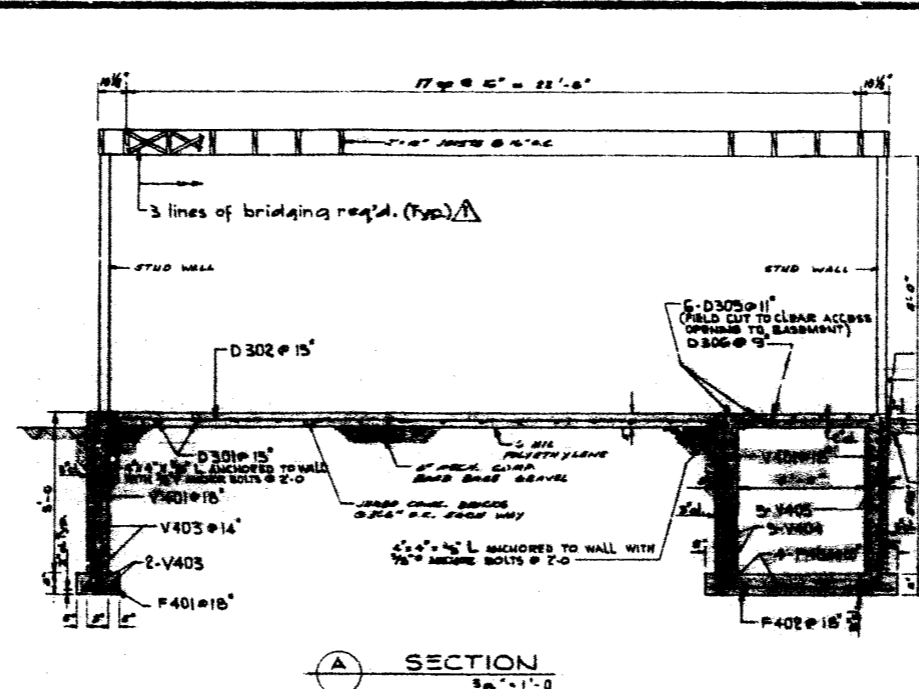


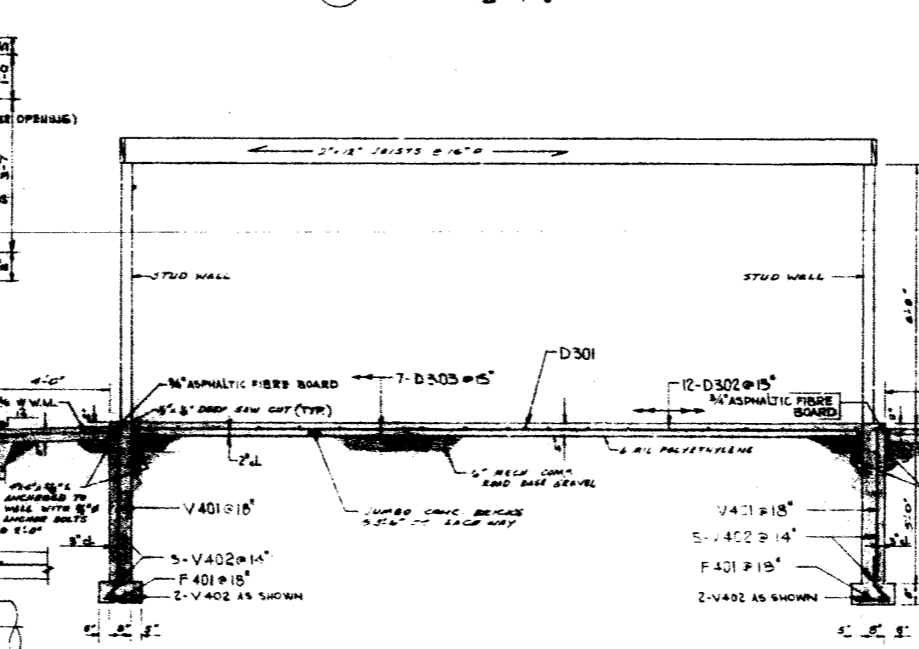
MAIN FLOOR PLAN  
1/2" = 1'-0"



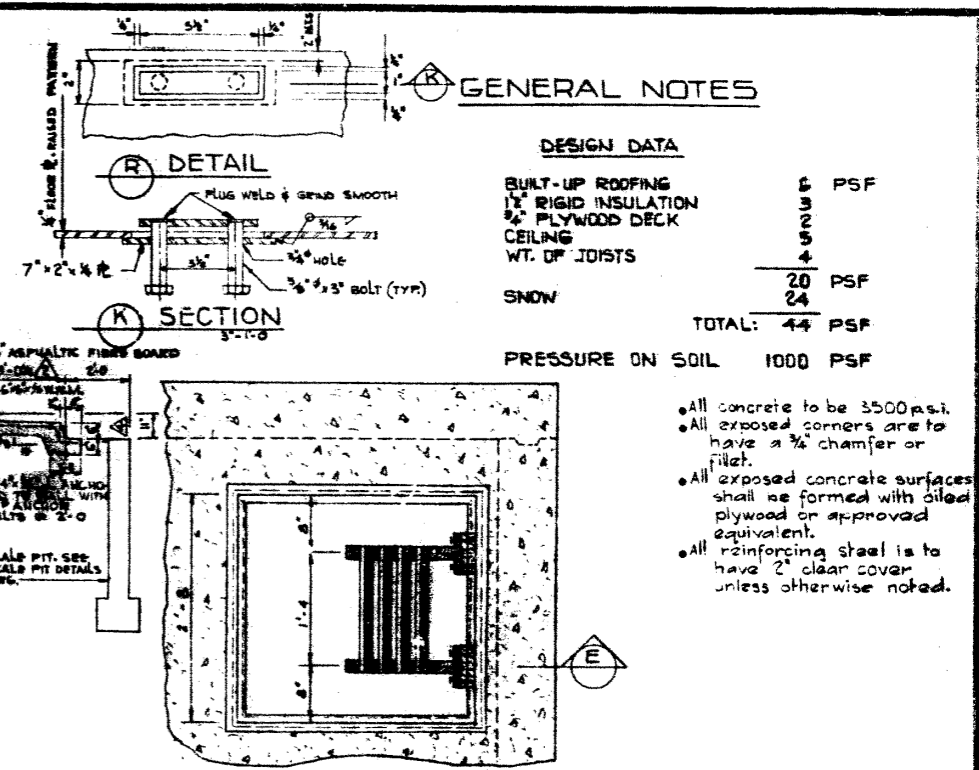
FOUNDAION PLAN  
1/4" = 1'-0"



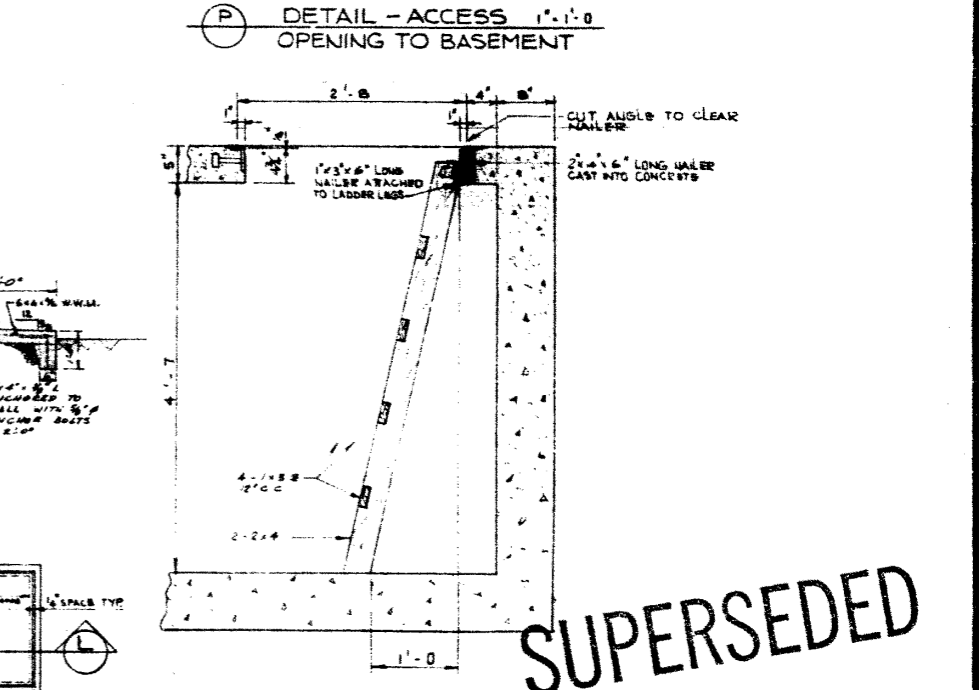
A SECTION  
3/8" = 1'-0"



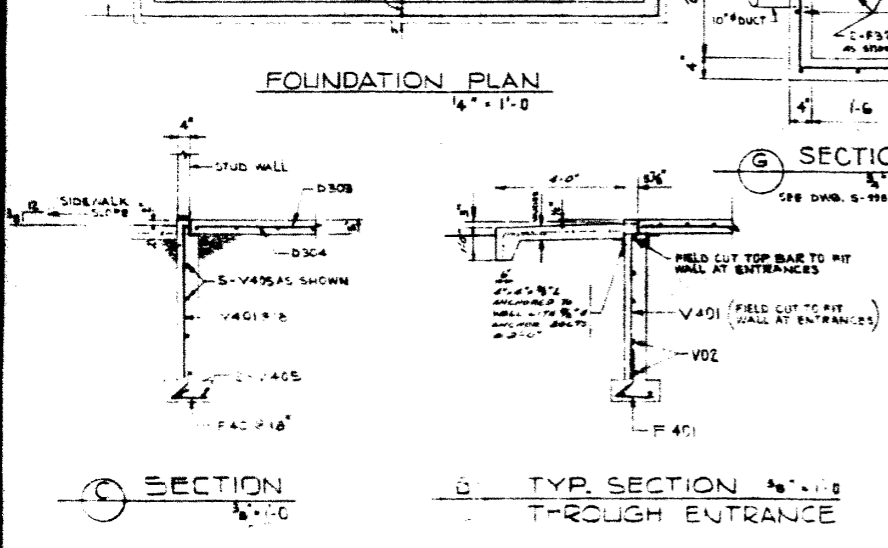
E SECTION  
3/8" = 1'-0"



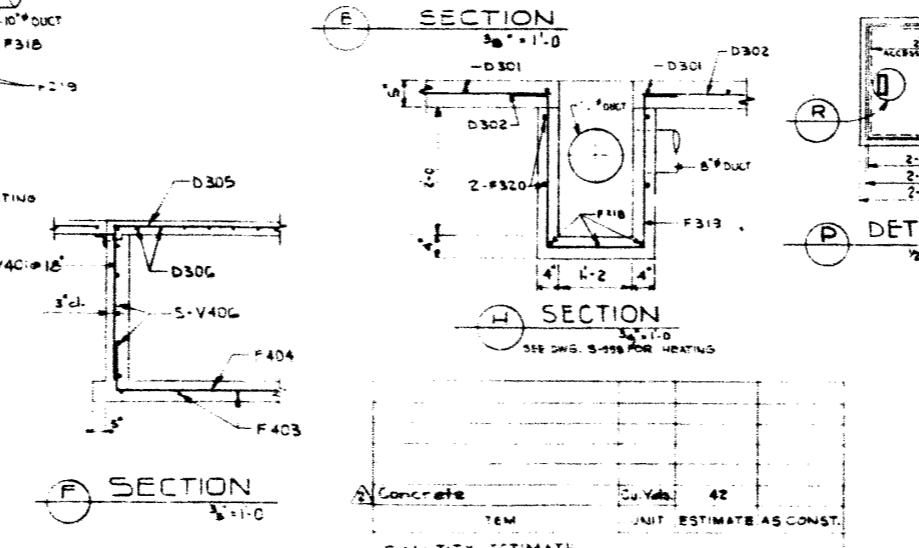
P DETAIL - ACCESS OPENING TO BASEMENT  
1" = 1'-0"



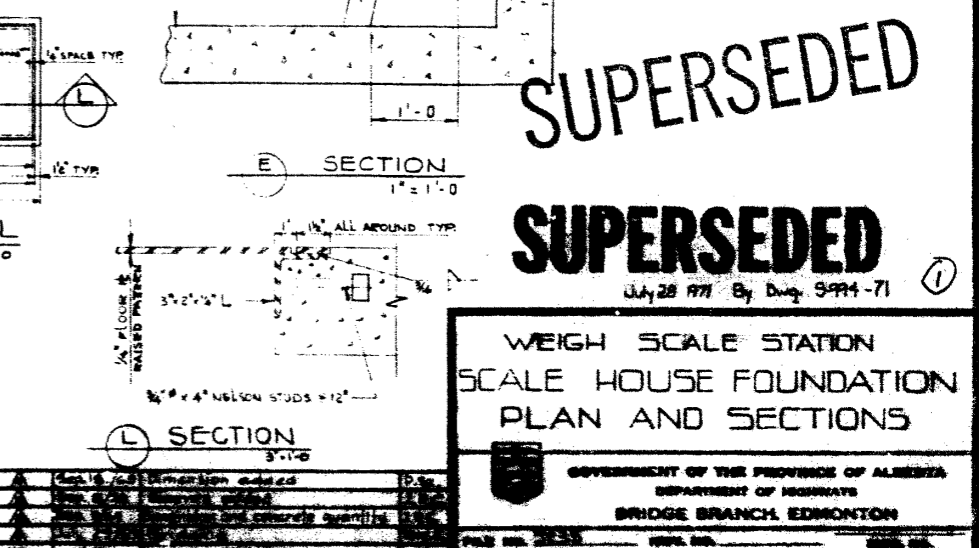
E SECTION  
1" = 1'-0"



TYP. SECTION THROUGH ENTRANCE  
3/8" = 1'-0"



F SECTION  
3" = 1'-0"



L SECTION  
3" = 1'-0"

**SUPERSEDED**  
**SUPERSEDED**  
July 28 1971 By Dwg. 9994-71

WEIGH SCALE STATION  
SCALE HOUSE FOUNDATION  
PLAN AND SECTIONS

GOVERNMENT OF THE PROVINCE OF ALBERTA  
DEPARTMENT OF HIGHWAYS  
BRIDGE BRANCH EDMONTON

CONCRETE 42  
UNIT ESTIMATE AS CONST.

REVISIONS

9-994

DATE 10 19  
DATE 10 19  
DATE 10 19