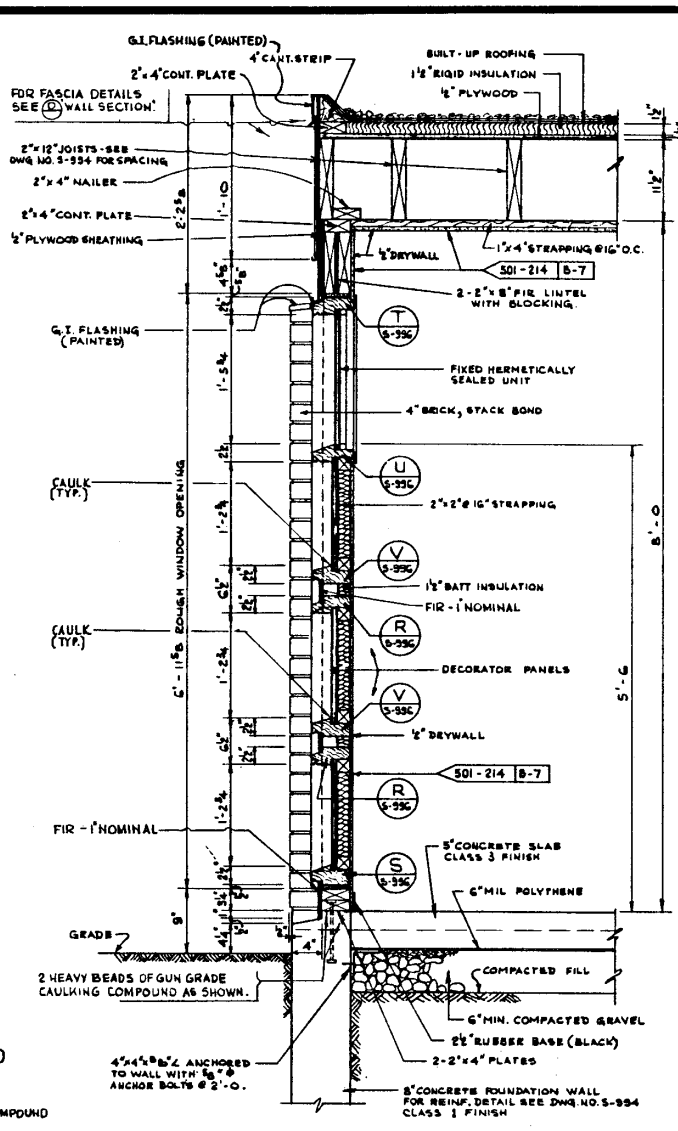
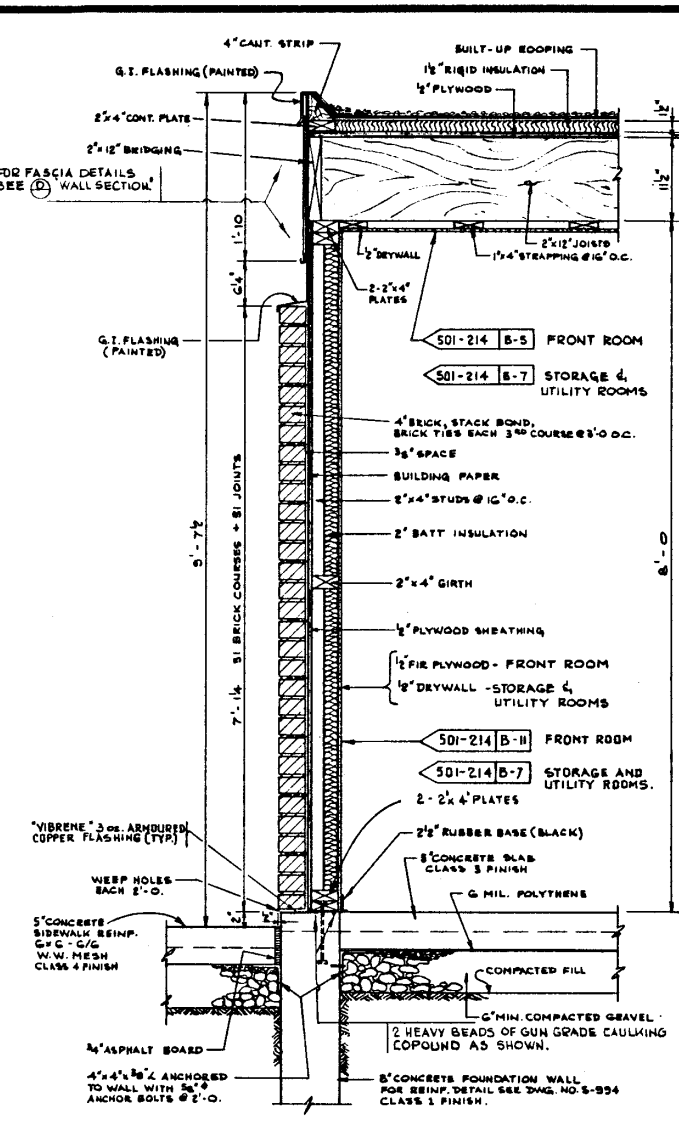


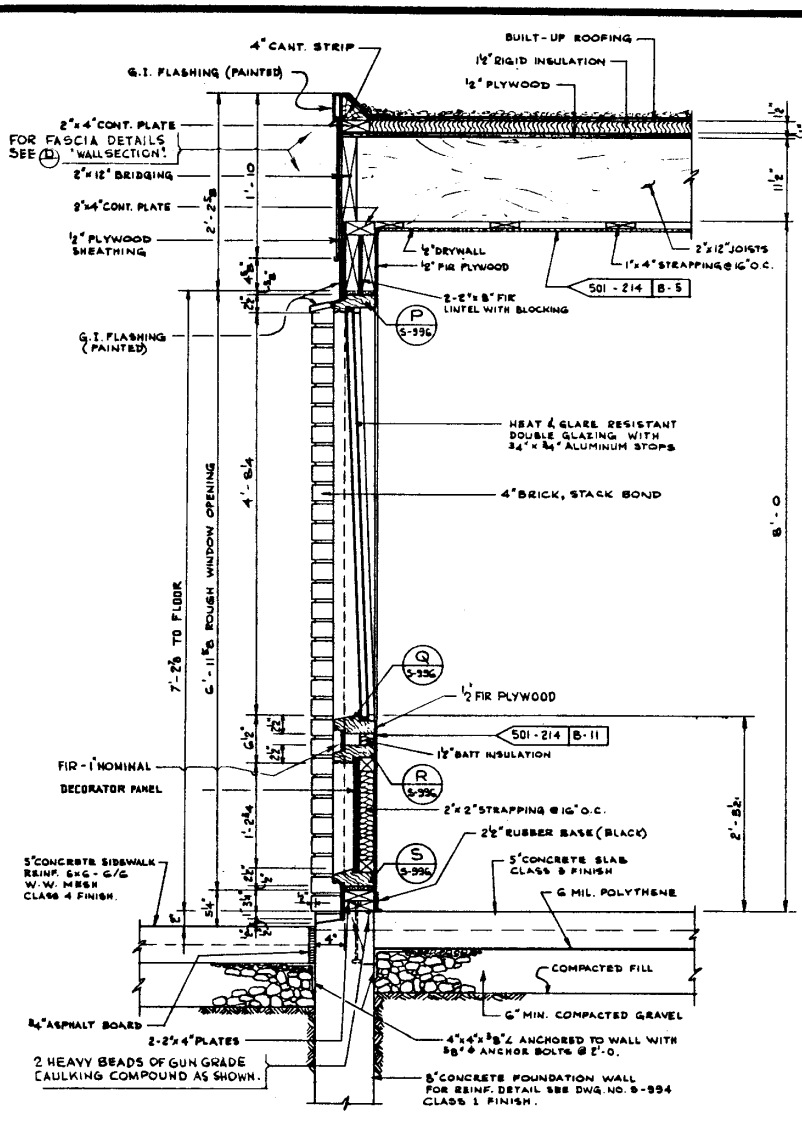
D WALL SECTION
5-995
1" = 1'-0"



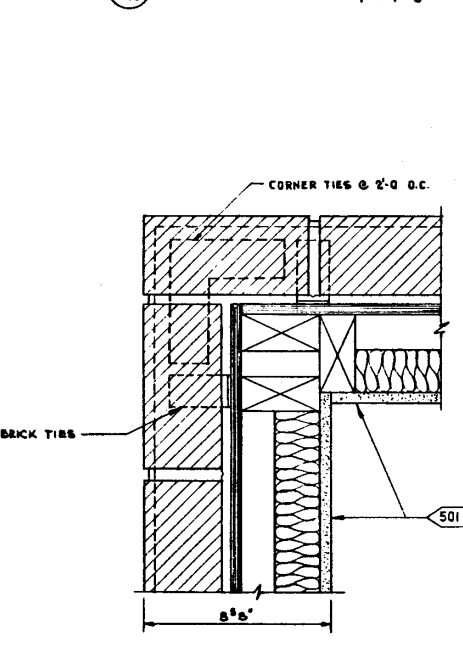
E WALL SECTION
5-995
1" = 1'-0"



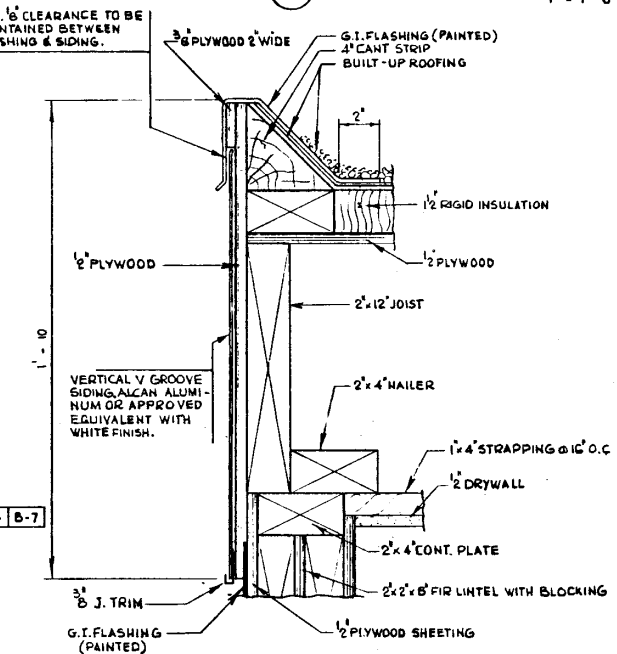
F WALL SECTION
5-995
1" = 1'-0"



G WALL SECTION
5-995
1" = 1'-0"



L CORNER SECTION
5-995
3" = 1'-0"



M FASCIA DETAILS
5-995
3" = 1'-0"

WALL SECTION 5-995 SIMILAR EXCEPT ROOF AS 5-995

GENERAL NOTES

- All paint shall be of a quality as recommended by the Canadian Government Specification Board Guide to the Selection of Paint Specification 1-GP-72.
 - Paint colours shown in colour schedule refer to Canadian Government Specification Board Standard Paint Colours 1-GP-12C.
- Colour
501-208 B-1
Finish
- All brick facings to be 1-XL 23G Koko Brown Cordovan Smooth.
 - Decorator panels are to have 3/4" exterior grade plywood core with 16 ga. uncoated steel on outside and zinc coated steel on inside. Outside to be given two shop coats of primer and finish. S.B. Specification 1-G.P.-12GA Type III on each side. Each coat is to have a dry thickness of 1.5 to 2.5 mils.

APPROVED
BY 5-995-76
JUNE 1976

Taken from D.P.W. Dwg's.

| | | | |
|-----------------------|------------|--|--------------|
| APPROVED | | PROVINCE OF ALBERTA DEPARTMENT OF HIGHWAYS AND TRANSPORT BRIDGE BRANCH | |
| CHIEF BRIDGE ENGINEER | | WEIGH SCALE STATION WALL SECTIONS, WINDOW & DOOR DETAILS # 1 | |
| DESIGNED | DRAWN BY | DATE | CHECKED BY |
| | V. Boychuk | July 71 | J.R. Shannon |
| NO. | DATE | DESCRIPTION | BY |
| | | Revised & redrawn. | J.R.C. |
| REVISIONS | | | |
| DESIGNED | DRAWN BY | DATE | CHECKED BY |
| | V. Boychuk | July 71 | J.R. Shannon |
| DATE | STREAM | LOCATION | WHY. NO. |
| | | | |
| SCALE | FILE NO. | SHEET | DWG. NO. |
| shown | 3235 | of | 5-995-72 |