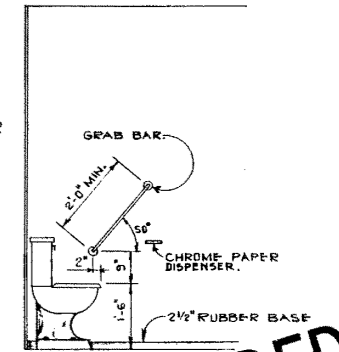


- HARDWARE SCHEDULE -**
- NOTE: UNLESS SPECIFIED BY CATALOGUE NO. OR OTHERWISE, FINISH CODE TO BE 26D BUTTS. 1 1/2 PR STANLEY BUTTS BB 173, 4 1/2 x 4" EACH DOOR EXCEPT STORM DOOR
- WASHROOM HARDWARE BY G.H. WOOD:
- GRAB BAR 105
 - PAPER TOWEL DISPENSER 2025 W.E.
 - SINGLE ROLL TOILET TISSUE DISPENSER R 200

- COUNTER GATES. 2" PIANO HINGE x 2'-6" RUSSWIN 19111 SECRET GATE CATCH
- DOORSTOP 1 DOORSTOP TO BE INSTALLED WHERE DIRECTED
- GATE BUMPERS 2 STOPS FOR GATES AND 1 STOP FOR TRAPDOOR TO BE INSTALLED WHERE DIRECTED.

- PLASTIC LAMINATE**
- Ⓐ ARBORITE WINCHESTER WALNUT TEXTURE FINISH 55 W 171.
 - Ⓑ ARBORITE DOESKIN S 447

NOTE: ALTERNATES TO LISTED HARDWARE OR PLASTIC LAMINATES TO BE APPROVED BY ENGINEER BEFORE PURCHASE.



SUPERSEDED

SUPERSEDED MAR 3 1972

By DWG. S997-72

REVISIONS				APPROVED		PROVINCE OF ALBERTA DEPARTMENT OF HIGHWAYS AND TRANSPORT BRIDGE BRANCH	
NO.	DATE	DESCRIPTION	BY	DATE	CHIEF BRIDGE ENGINEER	WEIGH SCALE STATION DETAILS OF INTERIOR FITTINGS	
1	Sept 24/71	Laminate finish, dimensions	J.R.C.				
2	July 71	Redrawn	J.R.C.				
DESIGNED	DRAWN BY	DATE	CHECKED BY	DATE	STREAM	LOCATION	HWY. NO.
J.R. Channon	F.W. Buda	Aug 1971	J.R. Channon	Aug. 1971			
SCALE	FILE NO.	SHEET	DWG. NO.				
shown	3235	of	S-997-71				