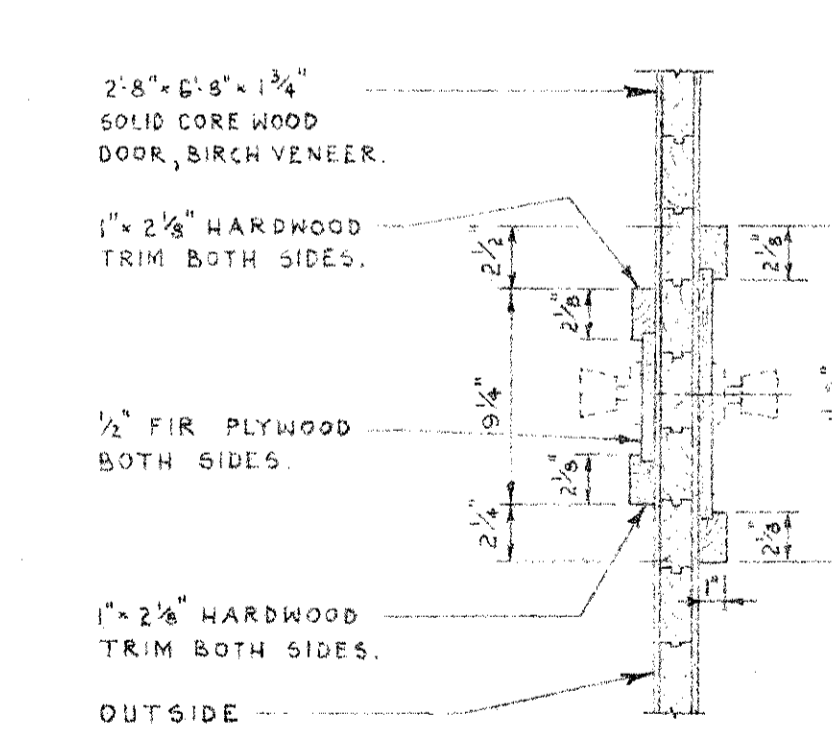


NOTE:
 EXTERIOR DOORS TYPE (D) TO BE COMPLETELY WEATHER STRIPPED AND TO HAVE ALUMINUM THRESHOLD AS SHOWN IN DETAIL (EE) (S-933)
 HARDWARE: ALL DOORS SHALL HAVE 3 PAIRS OF BRASS HINGES 8" LONG, 2 PAIRS OF BRASS HANDLES WITH LOCK FROM BOTH SIDES. PROVIDE SPECIAL LOCK FOR LAVATORY DOOR FROM INTERIOR SIDE ONLY. (DOOR TYPE (3)).



DOOR TYPE 1
 SECTION
 SCALE: 1/2" = 1'-0"

SUPERSEDED
 By DWG. S-997-71

WEIGH SCALE STATION
 DETAILS OF INTERIOR FITTINGS

GOVERNMENT OF THE PROVINCE OF ALBERTA
 DEPARTMENT OF HIGHWAYS
 BRIDGE BRANCH, EDMONTON

NO.	DATE	DESCRIPTION	BY
	SEPT. 17/65	DOOR TRIM.	J.R.C.

FILE NO. 5255
 LOCATION
 STREAM

HWY. NO.
 SCALE as noted
 SHEET OF

DWG. NO.
 S-997

DESIGNED BY
 DATE 19
 DETAILED BY
 DATE 19
 CHECKED BY
 DATE 19