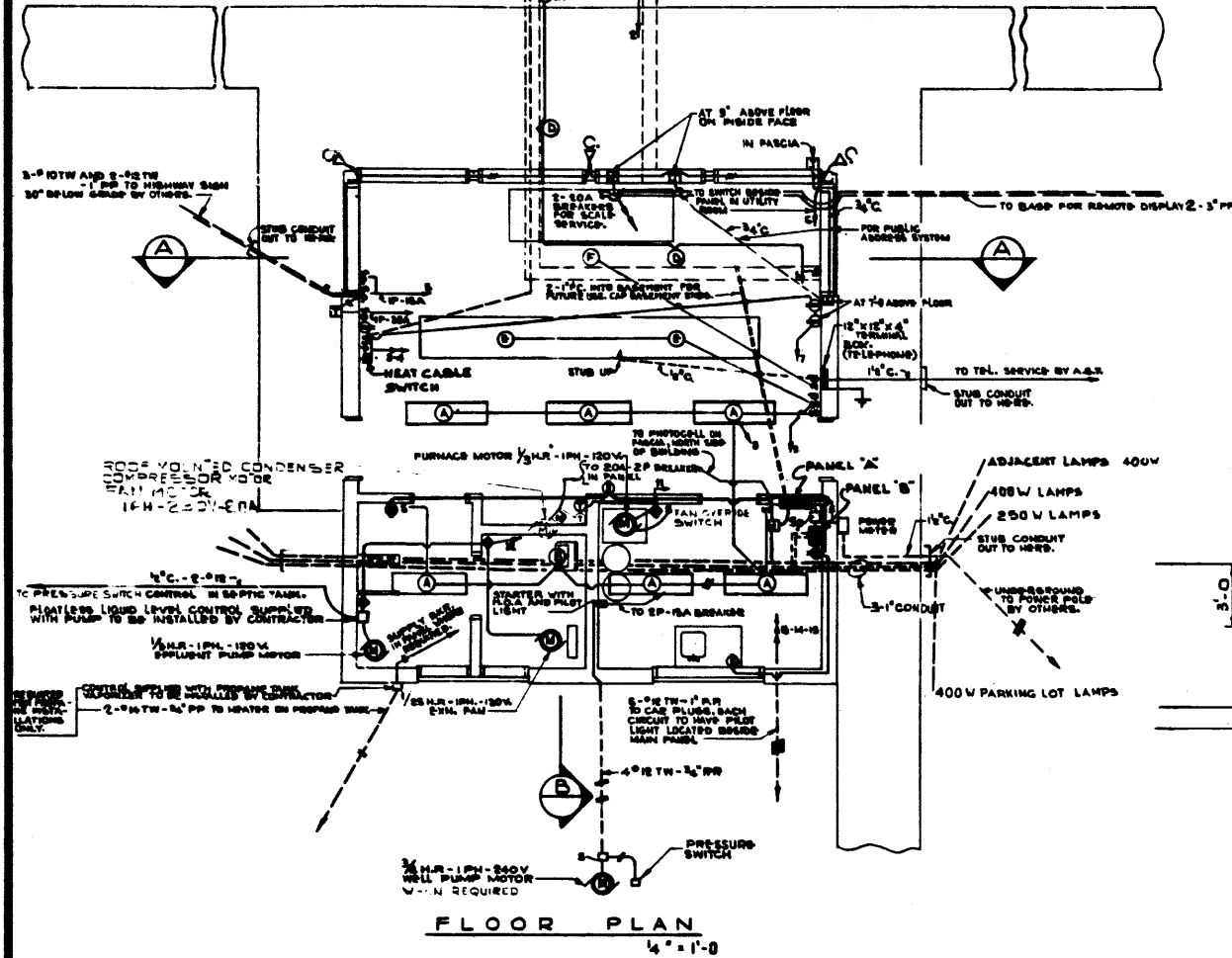
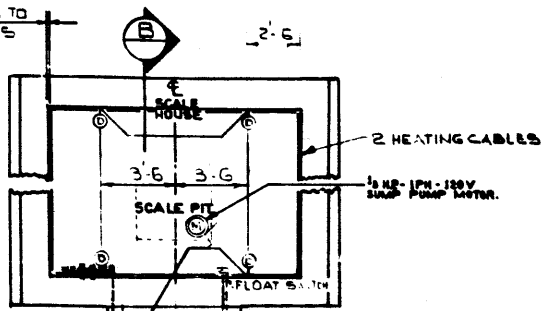
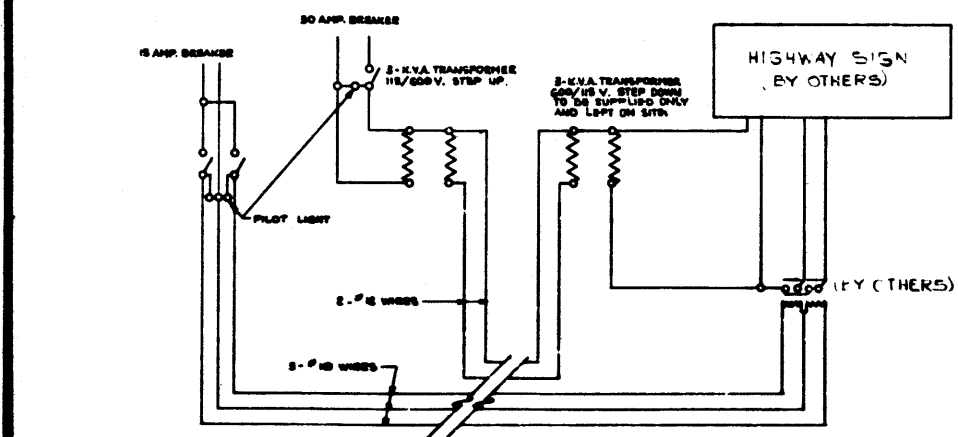


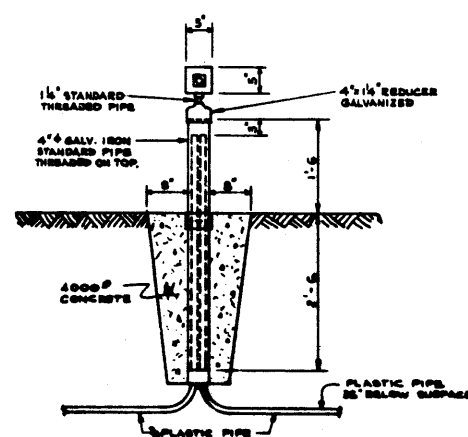
FASTEN HEATING CABLES TO FRONT OF BUFFER ANGLES SEE DWG. 7207-R



FLOOR PLAN 1/4" = 1'-0"



HIGHWAY SIGN LIGHTING WIRING DIAGRAM N.T.S.



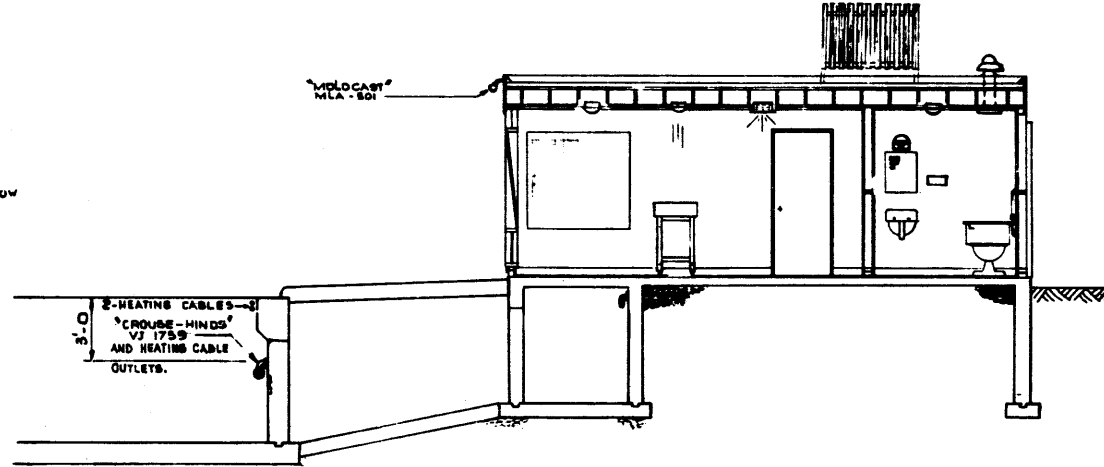
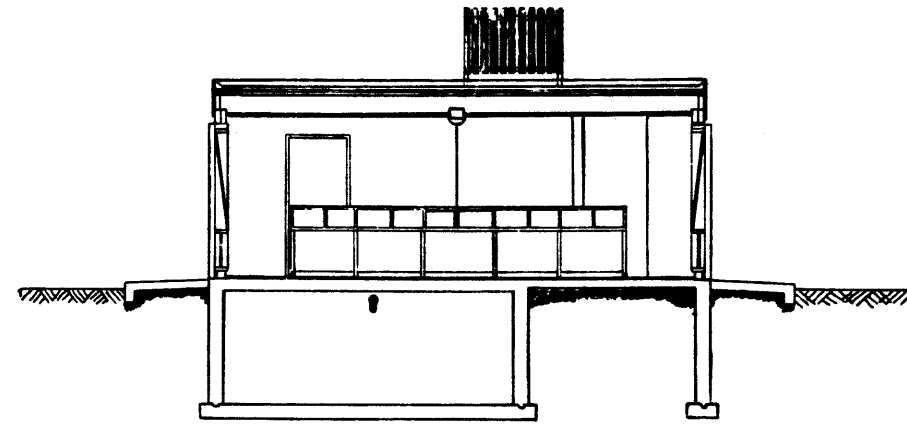
TYPICAL CAR PLUG BOX 3-Row TYPE-A 1/4" = 1'-0"

**SYMBOLS**

- ⊙ CEILING OUTLET WITH FIXTURE TYPE "A"
- ⊙ WALL OUTLET WITH FIXTURE TYPE "B"
- FLUORESCENT FIXTURE
- ⊙ LAMP HOLDER TYPE "C"
- ⊙ DUPLEX CONVENIENCE OUTLET (WR-WEATHERPROOF COVER)
- ⊙ THERMOSTAT
- ⊙ TRANSFORMER
- ⊙ MOTOR
- ⊙ JUNCTION BOX
- ⊙ TELEPHONE OUTLET
- ⊙ SINGLE POLE SWITCH
- ⊙ SWITCH AND PILOT LIGHT
- ⊙ THERMAL SWITCH
- CONDUIT IN FLOOR
- ▬ PANEL
- ▬ TELEPHONE CABINET
- HOME RUN TO PANEL. NUMBER OF ARROWS SHOWN INDICATES NUMBER OF CIRCUITS.
- ⊙ MAGNETIC MOTOR STARTER
- ⊙ DIMMER SWITCH

**GENERAL NOTES**

WORK BY OTHERS WILL BE ARRANGED AND PAID FOR BY THE DEPARTMENT.

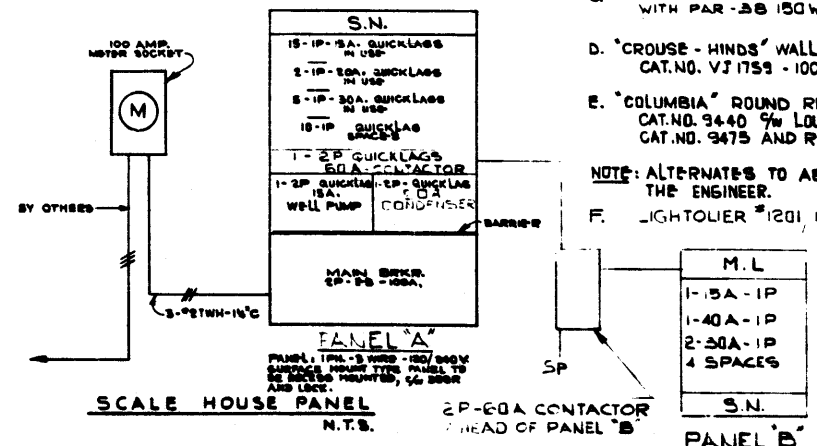


**FIXTURE LIST**

- A. "WILSON" MODULUX - 1'x4' RECESSED IN 1/2" WALLBOARD CEILING.
- B. "COLUMBIA" 4750 WALL BRACKET 9/16" CONVENIENCE OUTLET. - 2 - 60W.
- C. MOULDCAST LAMP HOLDER CAT. NO. MLA 501 WITH PAR - 38 150W FLOODLAMP.
- D. "CROUSE - HINDS" WALL BRACKET CAT. NO. VJ 1759 - 100 W.
- E. "COLUMBIA" ROUND RECESSED POT LIGHT CAT. NO. 9440 9/16" LOWERED FRAME SATIN WHITE CAT. NO. 9475 AND R 30-75 W BULB.

NOTE: ALTERNATES TO ABOVE TO BE APPROVED BY THE ENGINEER.

- F. LIGHTOLIER #1201 1222 PV 5W 30W R40FL LAMP.



APPROVED		PROVINCE OF ALABAMA DEPARTMENT OF HIGHWAYS AND TRANSPORTATION BRIDGE DIVISION	
WEIGH SCALE STATION ELECTRICAL		DATE	
REVISIONS		DATE	
NO.	DESCRIPTION	BY	DATE
1	REVISED AND RE-DRAWN.	J.B.C.	6-7-76
2			
3			
4			
5			
6			
7			
8			
9			
10			
11			
12			
13			
14			
15			
16			
17			
18			
19			
20			
21			
22			
23			
24			
25			
26			
27			
28			
29			
30			
31			
32			
33			
34			
35			
36			
37			
38			
39			
40			
41			
42			
43			
44			
45			
46			
47			
48			
49			
50			