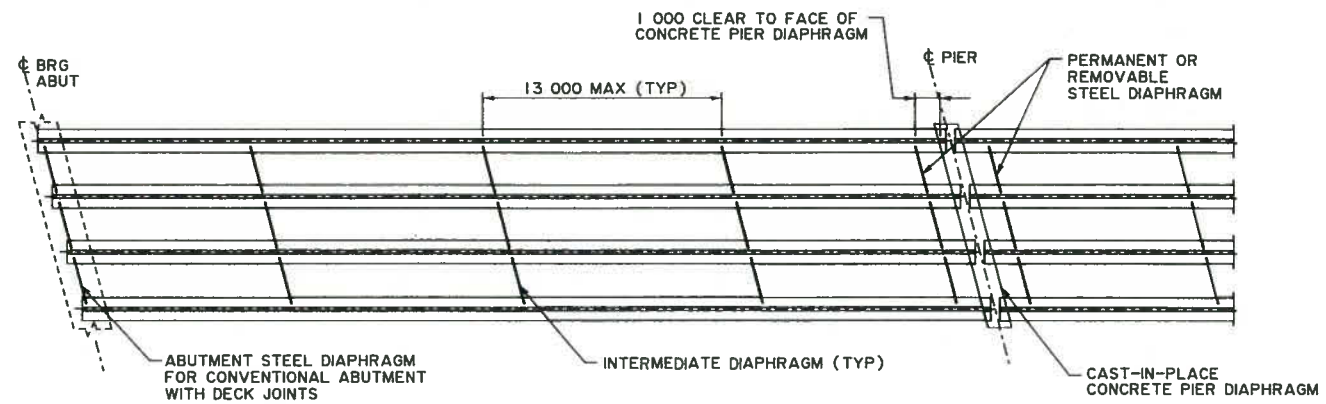


INTEGRAL ABUTMENT END

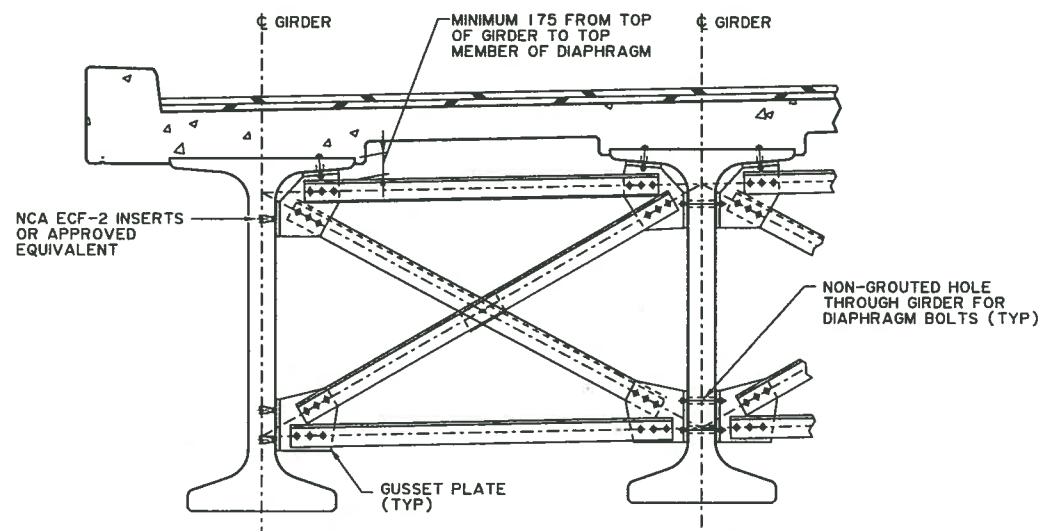


CONVENTIONAL ABUTMENT END

STEEL DIAPHRAGM LAYOUTS FOR SKEWS $\leq 30^\circ$

1:200

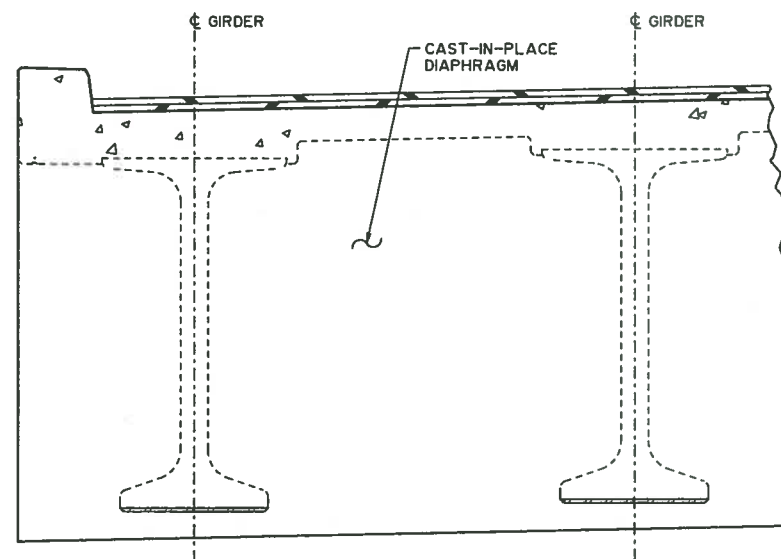
NOTE:
FOR SKEWS $> 30^\circ$
CONSULTANT TO DETERMINE
DIAPHRAGM ORIENTATION AND
LAYOUT



INTERMEDIATE DIAPHRAGM DETAILS

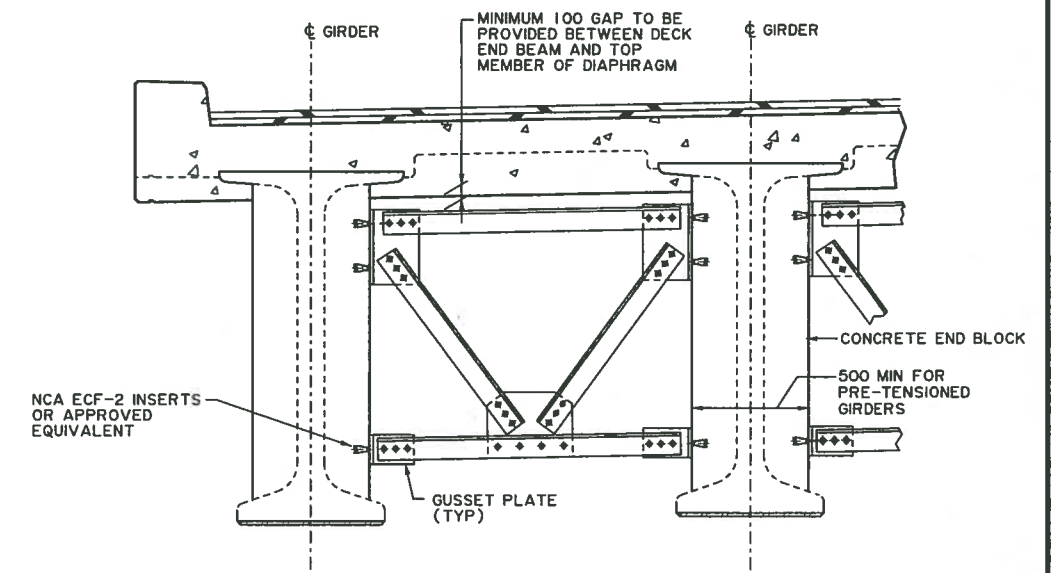
X-BRACING SHOWN
K-BRACING ALSO ACCEPTABLE

1:25



POST-TENSIONED AND PRE-TENSIONED NU GIRDERS
AT CONCRETE PIER DIAPHRAGM OR PRE-TENSIONED
NU GIRDER WITH INTEGRAL ABUTMENT

1:25



POST-TENSIONED AND PRE-TENSIONED NU GIRDER
CONVENTIONAL ABUTMENT DIAPHRAGM DETAILS

1:25

THEORETICAL GIRDER CAMBER AT MID-SPAN

	ASSUMED TIME (DAYS)	DEFLECTION (mm)	NET CAMBER (mm)
(1) GIRDER CAMBER AT RELEASE OF PRETENSIONED STRANDS		↑	
(2) GIRDER CAMBER AT GIRDER ERECTION PRIOR TO POST TENSIONING STAGE 1		↓ OR ↑	
(3) GIRDER CAMBER AFTER POST TENSIONING STAGE 1, IMMEDIATELY BEFORE CASTING DECK		↑	
(4) GIRDER CAMBER IMMEDIATELY AFTER CASTING DECK		↓	
(5) GIRDER CAMBER IMMEDIATELY AFTER POST TENSIONING STAGE 2		↑	
(6) GIRDER CAMBER IMMEDIATELY AFTER SUPERIMPOSED DL		↓	
(7) FINAL GIRDER CAMBER		↓ OR ↑	

NOTES:

- ACTUAL GIRDER CAMBER MAY BE EXPECTED TO VARY FROM THEORETICAL GIRDER CAMBER. THE CONTRACTOR SHALL MONITOR THE GIRDER CAMBER DURING CONSTRUCTION AND ADJUST DECK FORMWORK ACCORDINGLY TO OBTAIN THE REQUIRED GRADELINE
- VALUES IN THE 'DEFLECTION' COLUMN REPRESENT GIRDER CAMBER CHANGE IN EACH STAGE. VALUES IN THE 'NET CAMBER' COLUMN REPRESENT TOTAL CAMBER AFTER EACH STAGE
- ESTIMATED PRE-ERECTION GIRDER CAMBER BASED ON DUNNAGE LOCATED ___m FROM THE ENDS OF THE GIRDERS (CONSULTANT TO CONFIRM DUNNAGE LOCATIONS WITH PRECAST SUPPLIERS DURING DESIGN)

SUPERSEDED

DETAILS SHOWN ARE CONCEPTUAL AND REPRESENT DEPARTMENT PRACTICES AS REFERENCED IN THE BRIDGE STRUCTURES DESIGN CRITERIA. THE CONSULTANT IS FULLY RESPONSIBLE FOR DESIGNING THE DETAILS AND SHALL INCORPORATE THE DETAILS ON THE SITE SPECIFIC DRAWINGS AS APPROPRIATE

NOT FOR CONSTRUCTION

• WORK THESE DRAWINGS TOGETHER: T-1757 AND T-1758

<p>NU GIRDER BRIDGE TYPICAL DETAILS SHEET 1</p>			
DESIGNER	JA	CHECKER	EM
DATE	2017-04-06	DATE	2017-03-09
SHEET	1 OF 2	DRAWING	T-1757-17