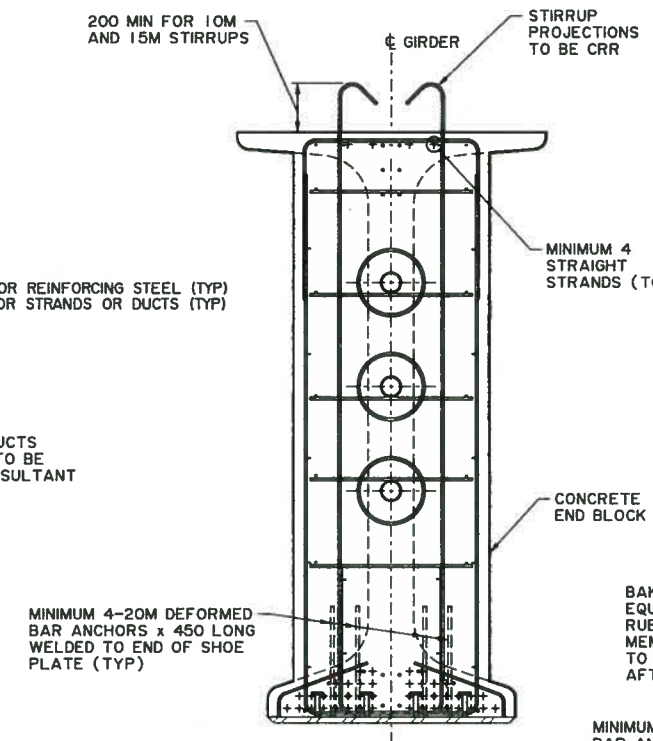
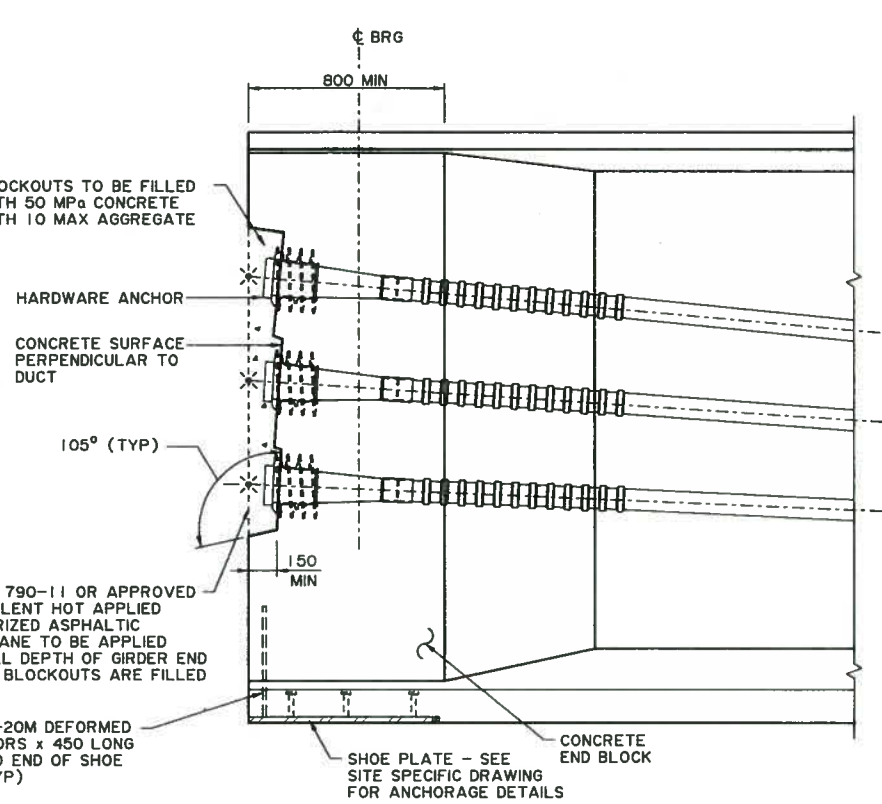


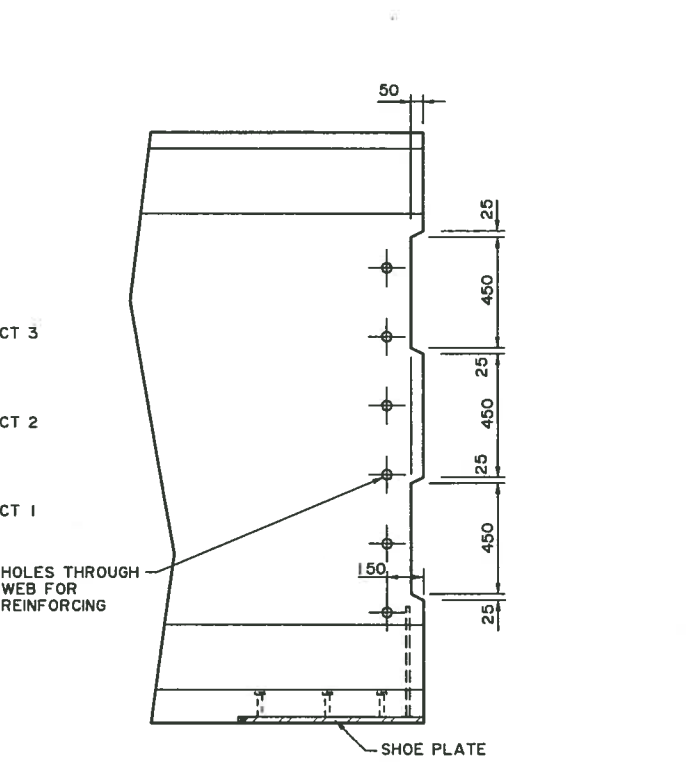
POST-TENSIONED GIRDER MID-SPAN SECTION
1:15



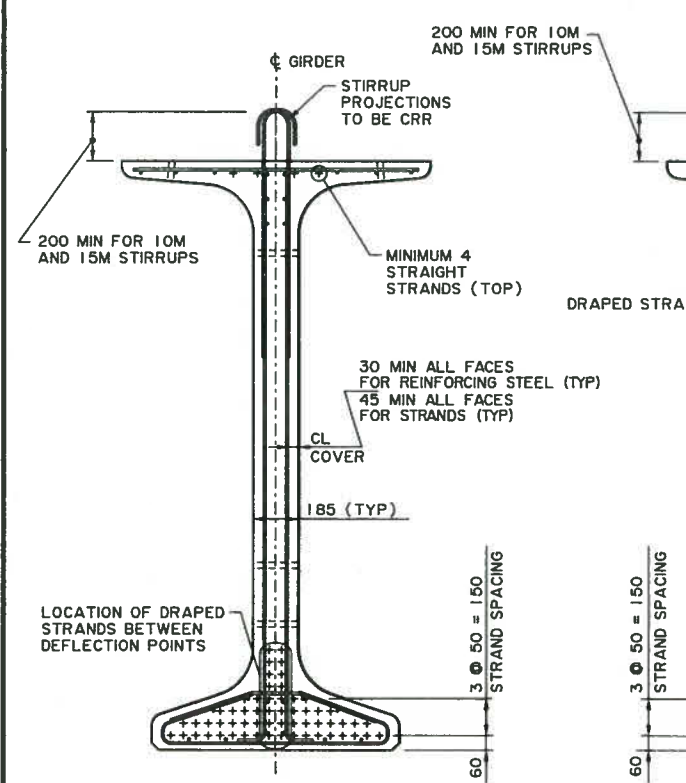
POST-TENSIONED GIRDER ABUTMENT END SECTION
1:15



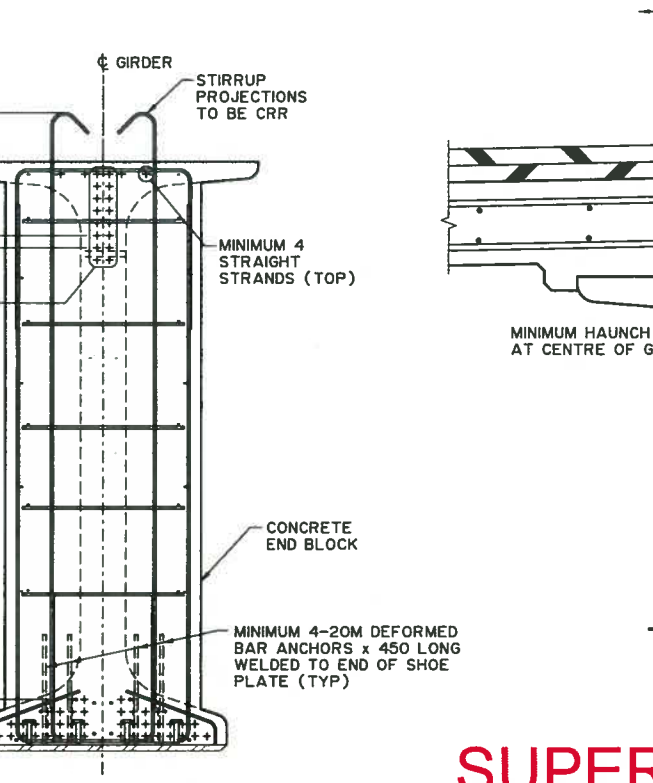
POST-TENSIONED AND PRE-TENSIONED GIRDER ABUTMENT END ELEVATION (POST-TENSIONED GIRDER SHOWN)
1:15



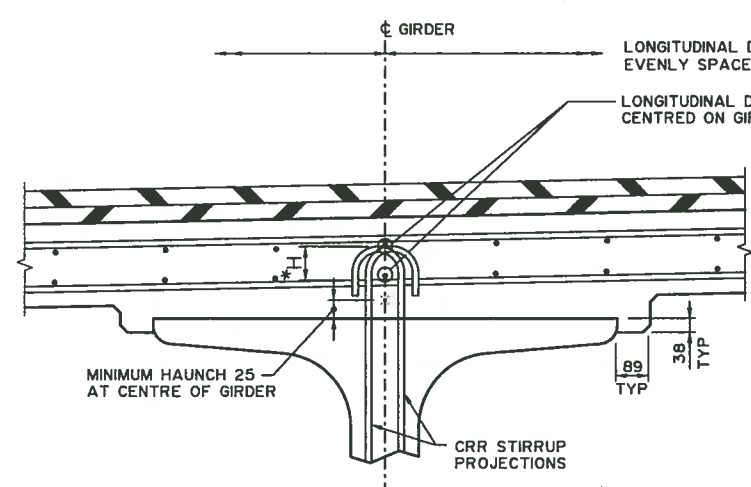
GIRDER END DETAIL CAST INTO CONCRETE DIAPHRAGM
1:15



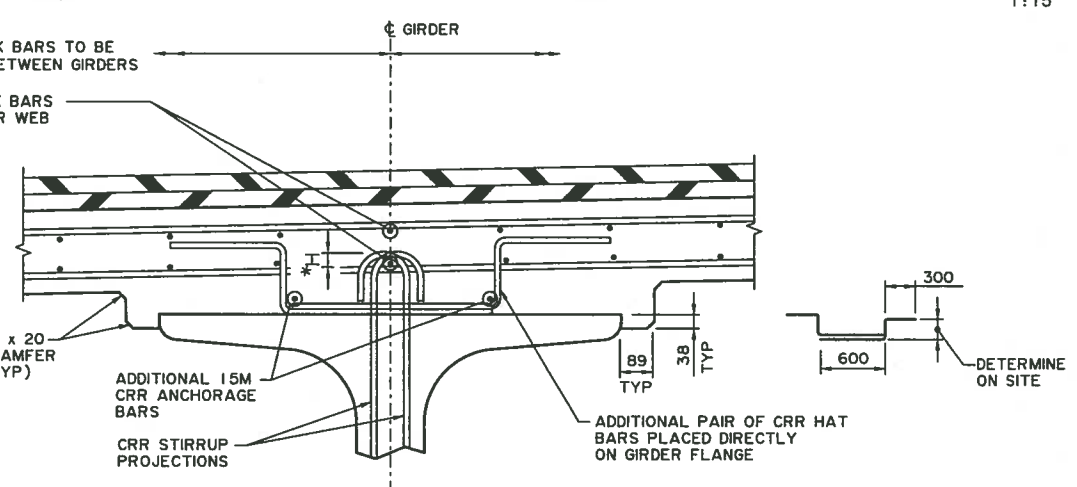
PRE-TENSIONED GIRDER MID-SPAN SECTION
1:15



PRE-TENSIONED GIRDER CONVENTIONAL ABUTMENT END SECTION
1:15



DECK HAUNCH DETAIL NO HAT BARS
1:10



DECK HAUNCH DETAIL WITH HAT BARS
1:10

IF $H \geq 40$ NO ADDITIONAL CRR HAT BARS REQUIRED
 IF $H < 40$ ADDITIONAL CRR HAT BARS REQUIRED
 *H REPRESENTS THE STIRRUP PROJECTION ABOVE THE UNDERSIDE OF THE LONGITUDINAL BOTTOM MAT OF DECK BARS

DETAILS SHOWN ARE CONCEPTUAL AND REPRESENT DEPARTMENT PRACTICES AS REFERENCED IN THE BRIDGE STRUCTURES DESIGN CRITERIA. THE CONSULTANT IS FULLY RESPONSIBLE FOR DESIGNING THE DETAILS AND SHALL INCORPORATE THE DETAILS ON THE SITE SPECIFIC DRAWINGS AS APPROPRIATE.

NOT FOR CONSTRUCTION

• WORK THESE DRAWINGS TOGETHER: T-1757 AND T-1758

SUPERSEDED

RECOMMENDED DIRECTOR BRIDGE ENGINEERING		APPROVED EXECUTIVE DIRECTOR TECHNICAL STANDARDS BRANCH		Alberta Transportation	
[Signature]		[Signature]		NU GIRDER BRIDGE TYPICAL DETAILS SHEET 2	
DESIGNER	JA	CHECKER	EM	DATE	2017-04-06
DATE	2017-03-09	SHEET	2 OF 2	DRAWING	T-1758-17