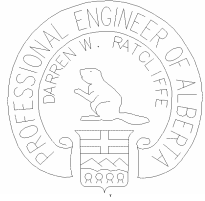


**CENTRAL REGION  
GEOHAZARD RISK ASSESMENT  
SITE INSPECTION FORM**

SITE NUMBER AND NAME <b>C31 H11:02 Mudslide</b>		HIGHWAY & KM	PREVIOUS INSPECTION DATE July 5, 2004	INSPECTION DATE <b>May 26, 2005</b>
LEGAL DESCRIPTION SE24-36-18-W5	NAD 83 COORDINATES N 5772660 E 539,000		RISK ASSESMENT PF: 1 CF: 1 TOTAL: 1	

SUMMARY OF SITE INSTRUMENTATION:  None	INSPECTED BY:  
LAST READING DATE:	
PRIMARY SITE ISSUE: Mud flow blocked highway after severe rainstorm	
APPROXIMATE DIMENSIONS:	
DATE OF ANY REMEDIAL ACTION: Diversion berms constructed in Fall 2004	

ITEM	CONDITION EXISTS		DESCRIPTION AND LOCATION	NOTICABLE CHANGE FROM LAST INSPECTION	
	YES	NO		YES	NO
Pavement Distress					
Slope Movement					
Erosion					
Seepage					
Culvert Distress					

<b>COMMENTS</b>
Refer to previous callout report and attached photos
Diversion berms constructed in Fall 2004 as per recommendations in KC report.
It is considered that this site can be deleted from the Geohazard Assessment Program.



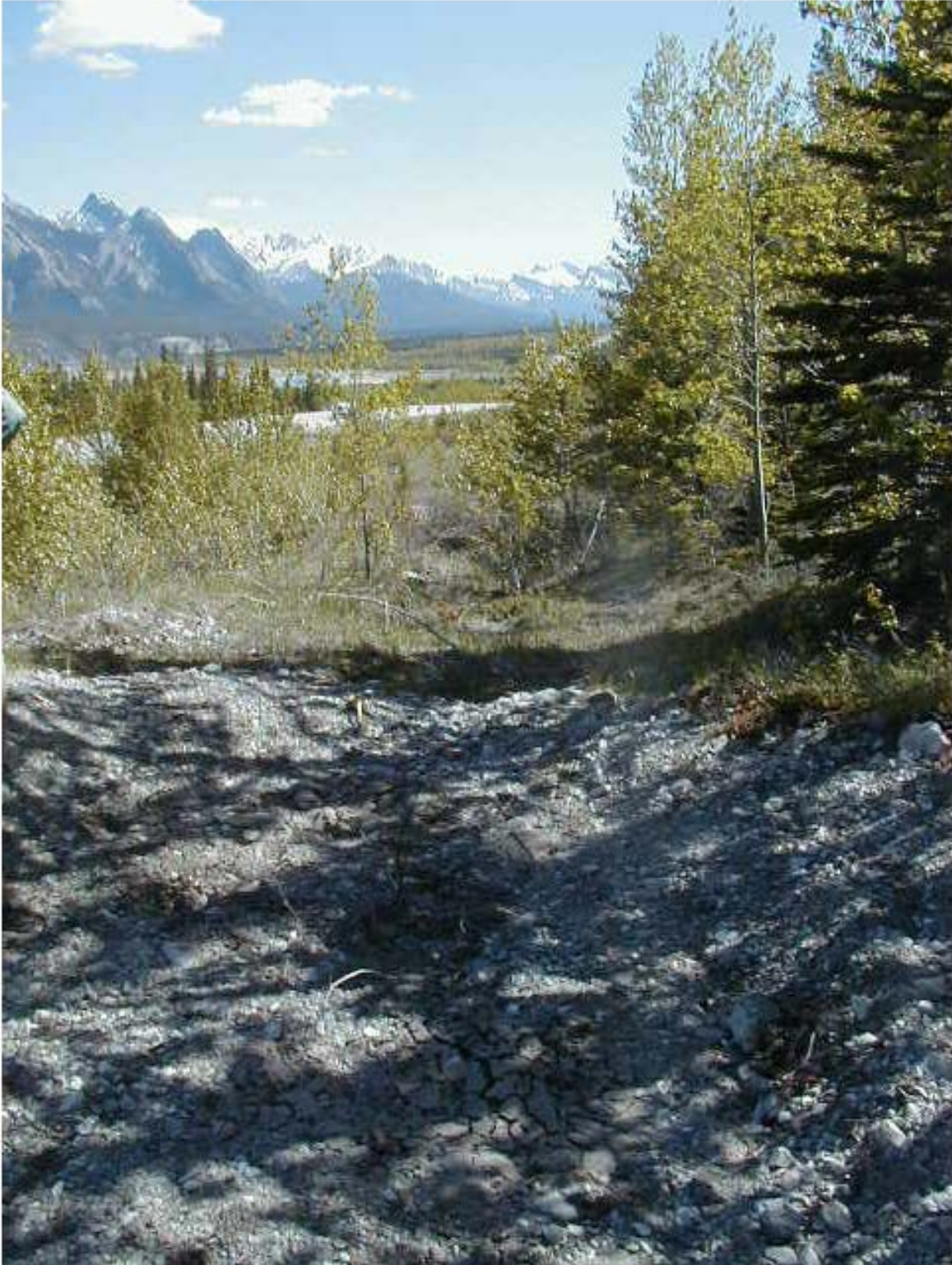




Site C31 H11:02  
May 26, 2005







Site C31 H11:02  
May 26, 2005

