

Slide Name: (GP 19) SH 677:02 W. of Woking and E. of SH 731:02
Inspection Date: N/A
Inspection By: N/A

1.0 BACKGROUND

Refer to EBA 2001 and earlier reports for site conditions and details of risk assessment.

2.0 OBSERVATIONS

- This site was not inspected during the 2003 spring tour.
- It was reported by AT staff that, at the time of this inspection tour, pavement construction was being carried out for the roadway and no serious deterioration of the site was noted.

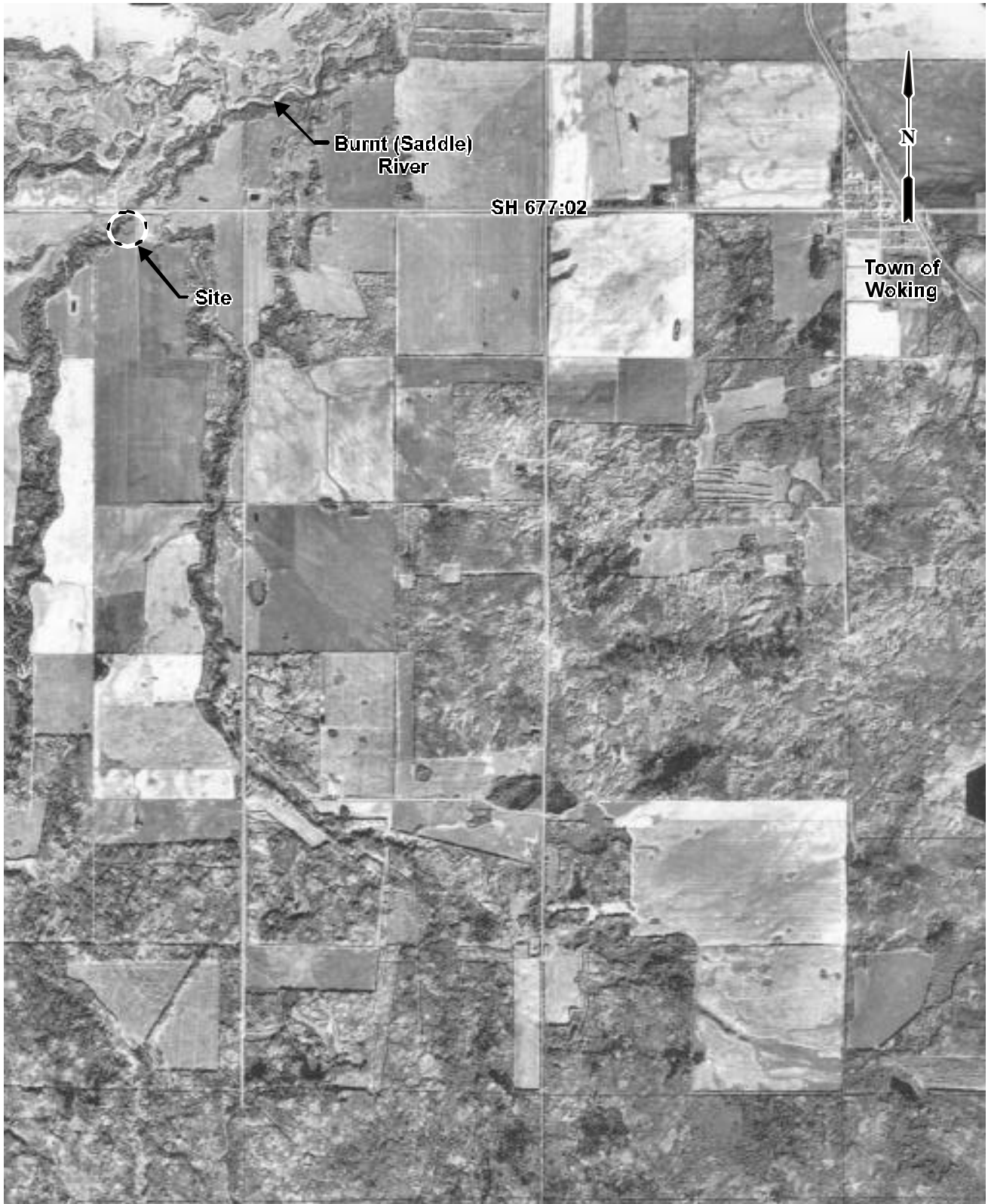
3.0 RISK ASSESSMENT

PF (5) * CF (2) = 10

Risk rating cannot be changed from that assessed in 2000.

4.0 ACTION

- Maintenance of roadway by pavement patching was considered a pragmatic measure.
- Visual monitoring of this site should be continued.



Based on 1995 Aerial Photograph

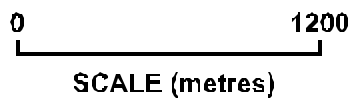


Figure 1
Site Plan