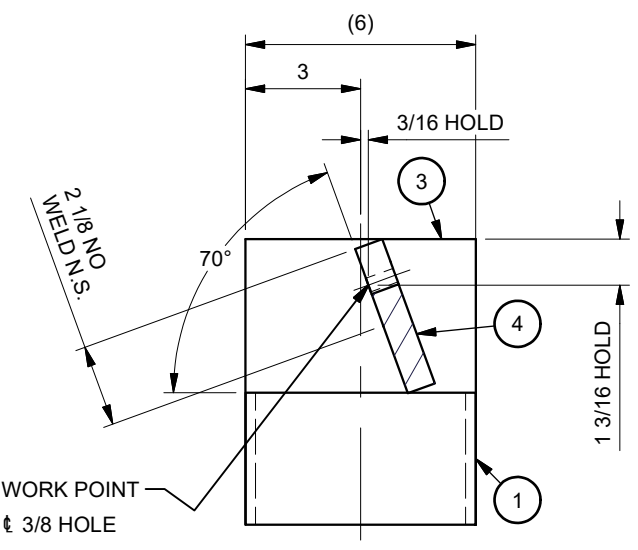
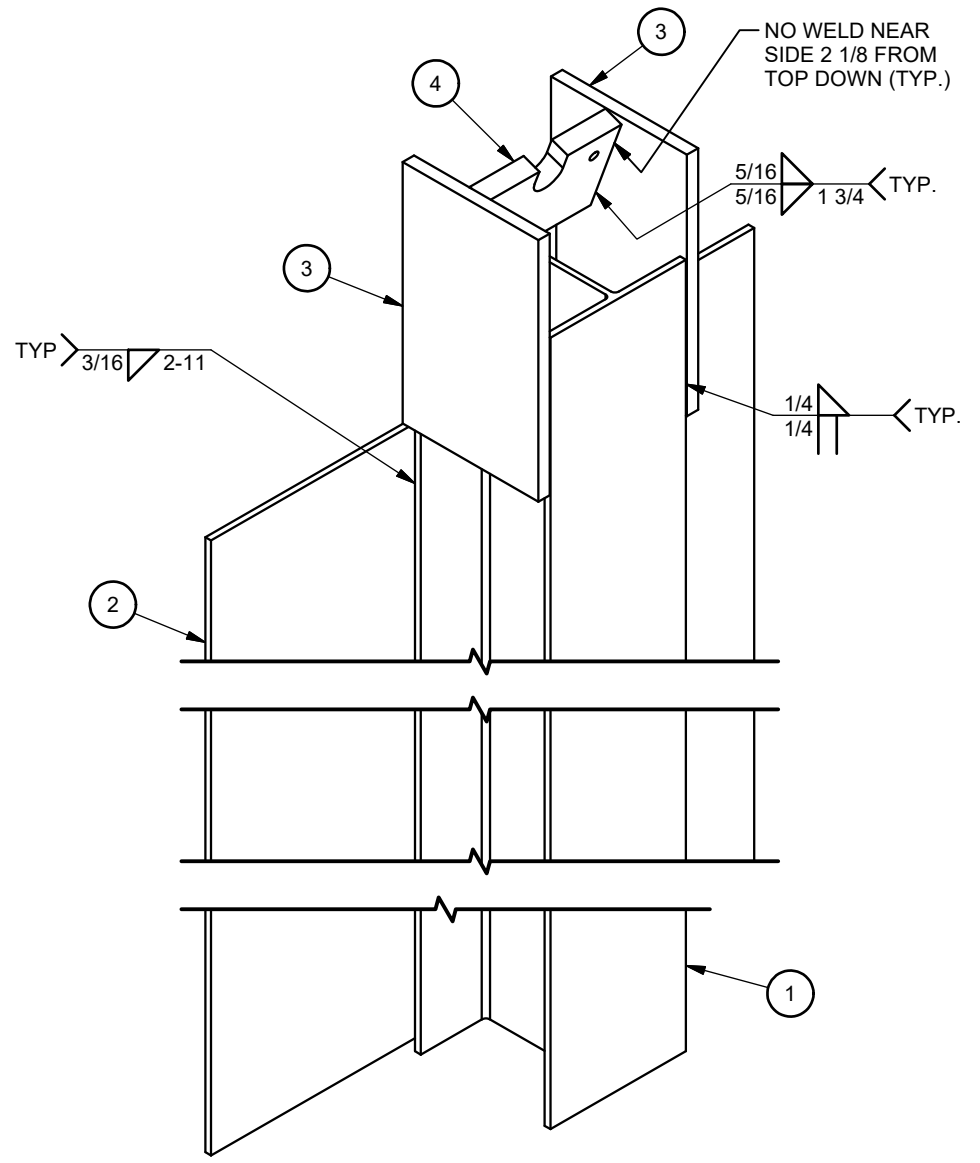



PARTS LIST			
ITEM	STOCK NO.	DESCRIPTION	QTY.
1	625563	W6X15X72	1
2	625571_65_25	PL 1/4 x 24 x 65.25	1
3	625567	PLT ST 1/2X6X10	2
4	625568	PLT ST 3/4X4X6 W/HOLES & NOTCH	1



NOTES:
 HOLD THE NOTED DIMENSIONS TO ENSURE A PROPER FIT WITH UPPER POST - 033935.
 WHEN SHOP ASSEMBLY OF THE UPPER & LOWER POSTS IS REQUIRED, REFER TO PC DRAWING - 033933. SIMILAR TO 033933, EXCEPT LENGTH & SOIL PLATE.

CRP POST PATENT: 7556242

FINISH AND GENERAL WORKMANSHIP PER CEMC-THP-SF-004, UNLESS OTHERWISE SPECIFIED.

MATERIAL: SEE PARTS LIST	DRAWN: E.A. Sikkema	DATE: 2/16/2016	TOLERANCES PER CEMC-THP-SF-001, UNLESS OTHERWISE SPECIFIED.				CRP - LOWER POST - 6'-4" 	DRAWING: 033099_76 REV: - SHEET: 1 of 1
FINISH: GALVANIZE, ASTM A123	UNLESS OTHERWISE NOTED, ALL DIMENSIONS ARE IN INCHES. DIMENSIONS ACCORDING TO ASME Y14.5M AND CEMC-THP-SE-003 UNLESS OTHERWISE SPECIFIED.		DO NOT SCALE DRAWING					
	Revision	ECO	Date	Rev	By	Chk.		
	INITIAL RELEASE	4184		-	EAS			
EST UNFINISHED WT: 249 lbs								