

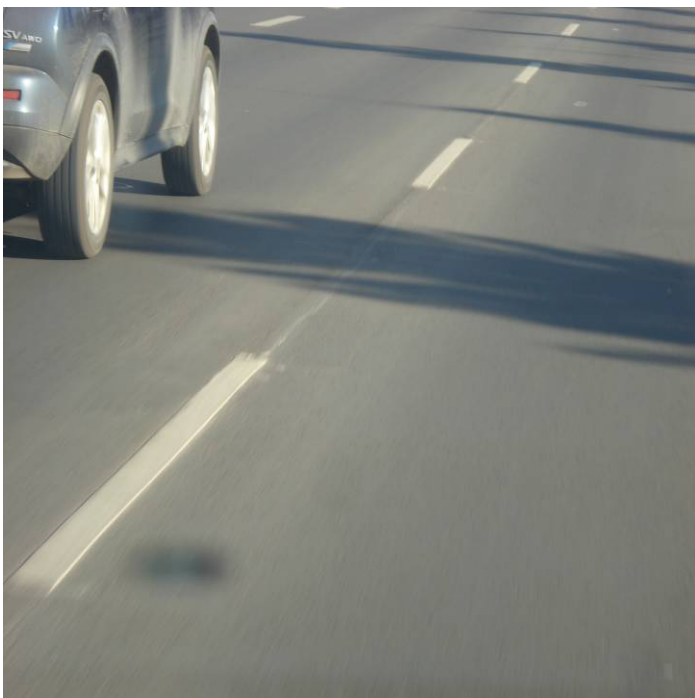
Date: February 14, 2012

ArcticLine HP Hot Thermoplastic Pavement Marking

Sherwood Park – Baseline Road (From Broadmoor Blvd to Crimson Drive)

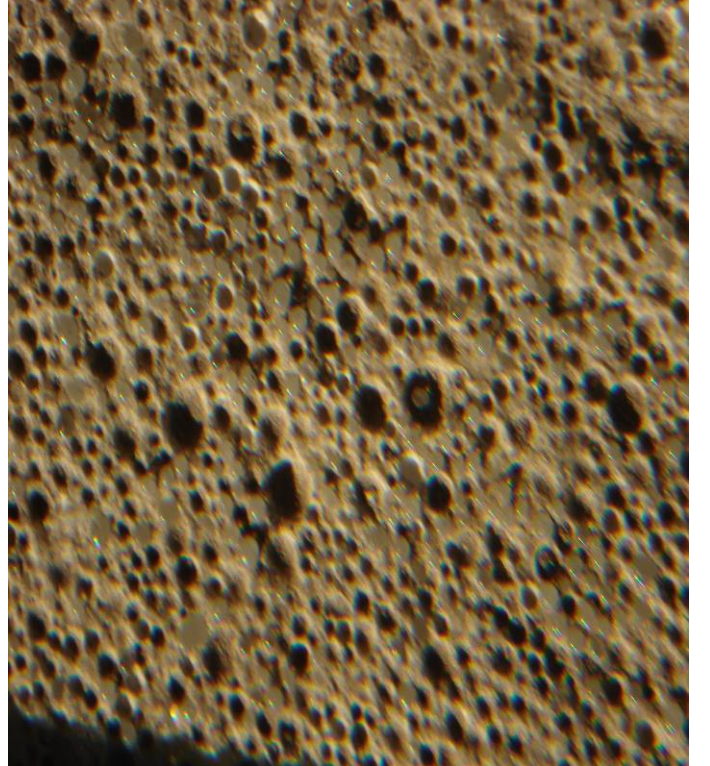
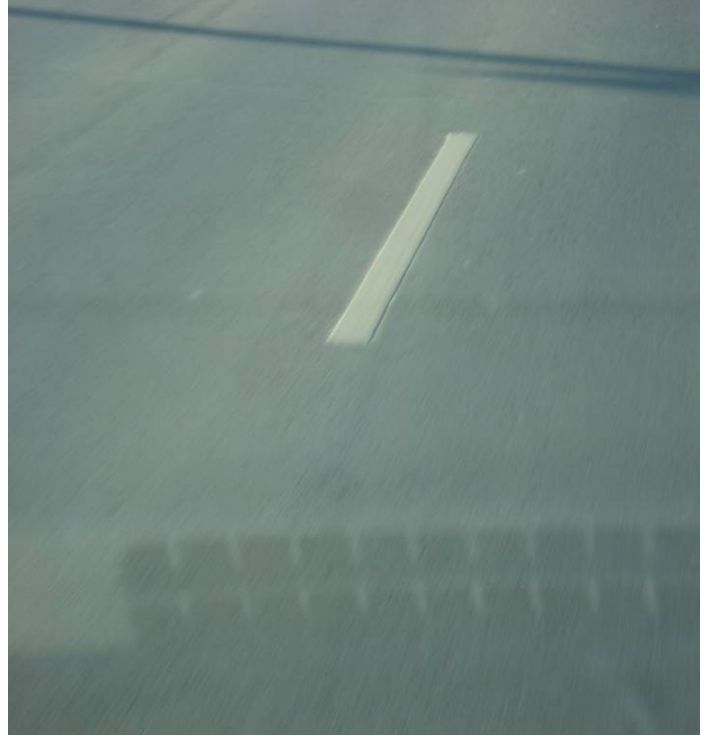


Looking east, marking look good visually (very little wear)



Close-up, the markings look good at this time. Was not able to take retro's, all lines are intact and glass beads are visible.

Sherwood Park – Wye Road (From Brentwood Blvd to Clover Bar Road)



Durable markings at this location are in good shape, plenty of glass beads are present in the material, lines are dirty. This winter has not been harsh, need to access marking after one more winter.

Advance product to Trial Products category