

Product Evaluation

RE: Review of CASS & CASS S3 Cable Steel Anchor

PRODUCT

CASS & CASS S3 Cable Steel Anchor is manufactured by Trinity Highway Safety Products Incorporated located in Dallas, Texas, distributed in Alberta by Roadside Supply located in Sherwood Park, Alberta.

VENDOR CLAIMS AND INFORMATION

CLAIMS:

CASS & CASS S3 Cable Steel Anchors should be able to retain tension in the cables within the ranges specified by the manufacturer for each temperature range, be free of frost heave, and the anchor should not exceed a movement of 50mm (horizontally or vertically, as measured at the end of the cable base plate).

DESCRIPTION:

CASS & CASS S3 Cable Steel Anchor is designed to meet Alberta soil conditions based on parameters specified by Technical Standards Branch, Alberta Transportation. The soil plate with 6' embedment is to be used when installed in engineered fill and the 8' soil plate embedment is to be used where the anchor is not placed in engineered fill. Drawings showing the detailed plans and calculations can be found at

<http://www.transportation.alberta.ca/Content/doctype253/production/CASSsteelanchor.pdf>

POTENTIAL USAGE:

CASS & CASS S3 Cable Steel Anchor is designed for use with the CASS or CASS S3 Cable Barrier System.

STANDARDS:

N/A

ALBERTA TRANSPORTATION COMMENTS

EXPERIENCE:

Alberta Transportation has no experience with this system.

APPLICATION STANDARDS:

N/A

RECOMMENDATIONS:

CASS & CASS S3 Cable Steel Anchors be listed as a Proven Product under Alberta Transportation Products List, Traffic Control Devices – High Tension Cable Barrier Anchors – Proprietary, based on the information provided.

TRIAL PROJECTS

CASS (6' Long) Driven Anchor:

- Hwy 44 South of Flatbush – Installed: 2013
- Hwy 43 by Valleyview – Installed: 2013
- Hwy 824 by Ardrossan – Installed: 2014
- Hwy 15 East of Fort Saskatchewan – Installed: 2014
- Hwy 2 by Nampa – Installed: 2014
- Hwy 41 by Vermillion
- Hwy 45 by Saskatchewan Border – Installed: 2015
- Hwy 16 & 47 by Edson – Installed: 2015
- Hwy 88 by Bear River – Installed: 2015

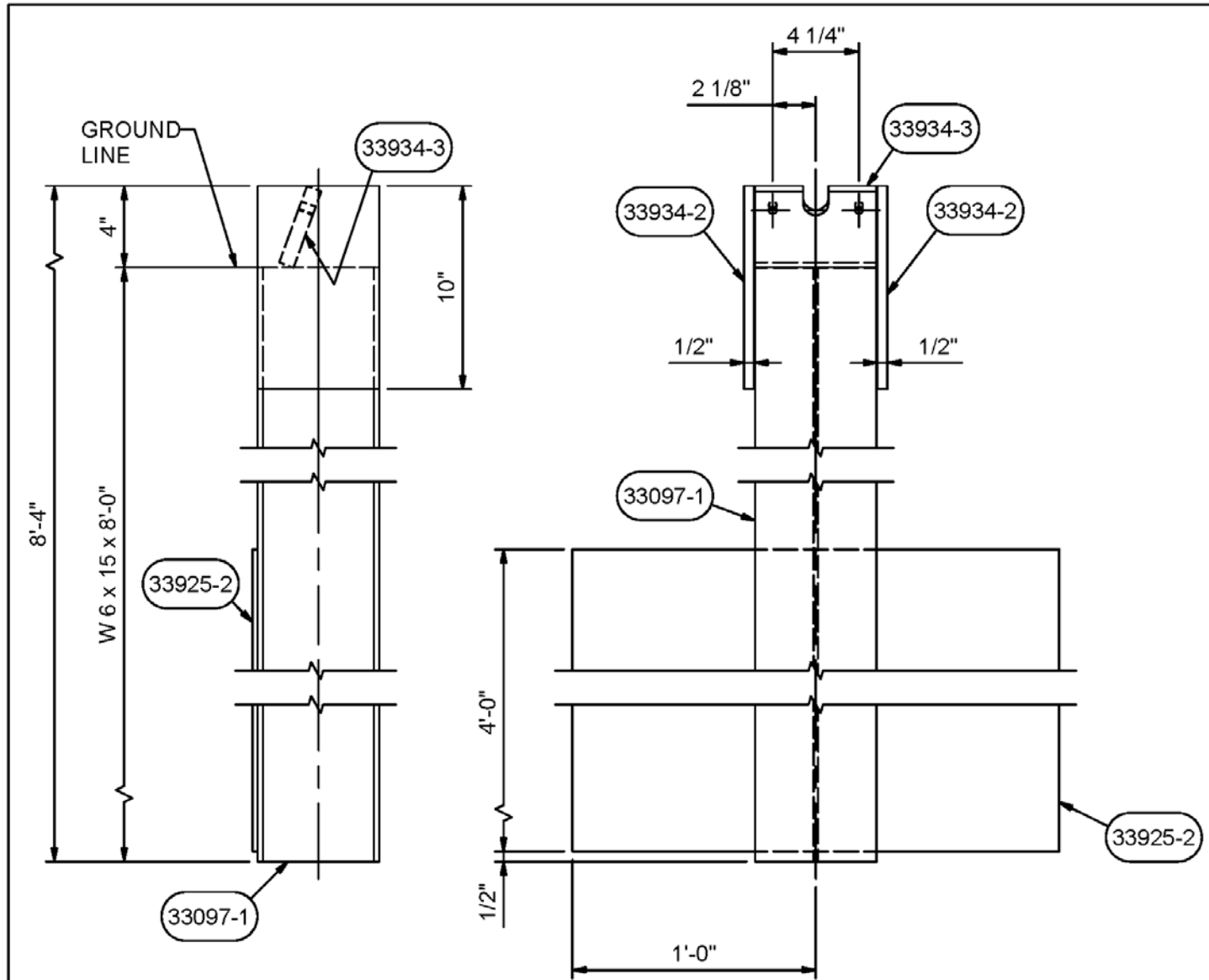
Hwy 1 by Irvine – Installed: 2015
Hwy 36 by Castor – Installed: 2015
Hwy 625 by Beaumont – Installed: 2015

CASS & CASS (8' Long) Driven Anchor:

Hwy 2A (Blackfalds) – Installed: 2015
Hwy 35 in Slavey Creek – Installed: 2015
Hwy 754 (Tender 786911) N. of Slave Lake – 30 units
Hwy 2, (Tender 12718) W. of Peace River – 12 Units

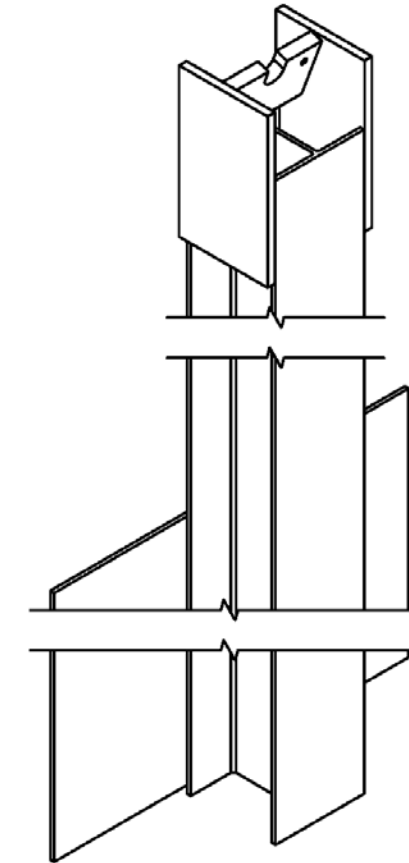
Joe Filice

cc New Product Evaluation Standing Committee – Roger Skirrow
Bill Kenny



BILL OF MATERIAL				
QTY	PART No	DESCRIPTION	Lbs / Each	MATERIAL
1	33097-1	W 6 x 15 x 8'-0"	119.98	SEE NOTE
1	33934-3	PL 3/4 x 4" x 6"	4.77	A36
2	33934-2	PL 1/2 x 6" x 10"	8.52	A36
1	33925-2	PL 1/4 X 24" x 4'-0"	81.78	A36

W 6 x 15 MATERIAL SPEC.: A992 / A572 OR A36.



NOTES:
 HOLD THE NOTED DIMENSIONS TO ENSURE A PROPER FIT WITH UPPER POST ~ 33935.

WHEN SHOP ASSEMBLY OF THE UPPER & LOWER POSTS IS REQUIRED REFER TO PC DRAWING ~ 33933. SIMILAR AS 33933, EXCEPT LENGTH & SOIL PLATE.

CRP POST PATENT: 7556242

All material must be melted and manufactured in the U.S.A. Original raw material producing mill test reports are required. All mill test reports must be signed by an authorized representative of the producing mill. All material must have full traceability from all sources. All receipts must be identified by quantity, either in pounds or pieces, by heat number. All welding shall be in accordance with ANSI/AWS D1.1 section 5 and D1.5 section 3.

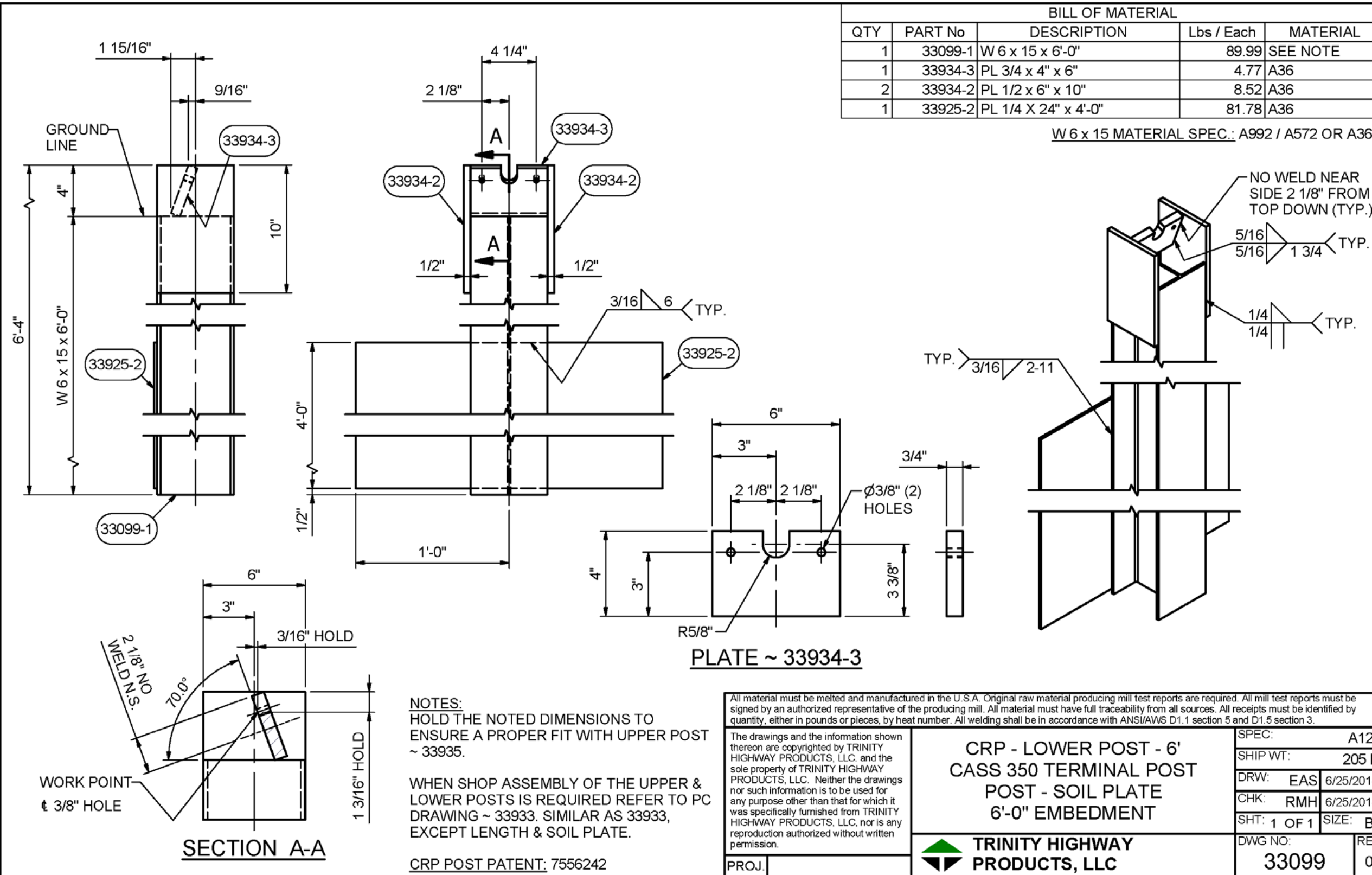
The drawings and the information shown thereon are copyrighted by TRINITY HIGHWAY PRODUCTS, LLC. and the sole property of TRINITY HIGHWAY PRODUCTS, LLC. Neither the drawings nor such information is to be used for any purpose other than that for which it was specifically furnished from TRINITY HIGHWAY PRODUCTS, LLC, nor is any reproduction authorized without written permission.

**CRP - LOWER POST - 8'
 CASS 350 TERMINAL POST
 POST - SOIL PLATE
 8'-0" EMBEDMENT**

**TRINITY HIGHWAY
 PRODUCTS, LLC**

SPEC: A123
 SHIP WT: 237 lb
 DRW: EAS 6/17/2015
 CHK: TG 6/17/2015
 SHT: 1 OF 1 SIZE: B

DWG NO: 33097
 REV: 0



BILL OF MATERIAL				
QTY	PART No	DESCRIPTION	Lbs / Each	MATERIAL
1	33099-1	W 6 x 15 x 6'-0"	89.99	SEE NOTE
1	33934-3	PL 3/4 x 4" x 6"	4.77	A36
2	33934-2	PL 1/2 x 6" x 10"	8.52	A36
1	33925-2	PL 1/4 X 24" x 4'-0"	81.78	A36

W 6 x 15 MATERIAL SPEC.: A992 / A572 OR A36.

NOTES:
 HOLD THE NOTED DIMENSIONS TO ENSURE A PROPER FIT WITH UPPER POST ~ 33935.
 WHEN SHOP ASSEMBLY OF THE UPPER & LOWER POSTS IS REQUIRED REFER TO PC DRAWING ~ 33933. SIMILAR AS 33933, EXCEPT LENGTH & SOIL PLATE.
 CRP POST PATENT: 7556242

All material must be melted and manufactured in the U.S.A. Original raw material producing mill test reports are required. All mill test reports must be signed by an authorized representative of the producing mill. All material must have full traceability from all sources. All receipts must be identified by quantity, either in pounds or pieces, by heat number. All welding shall be in accordance with ANSI/AWS D1.1 section 5 and D1.5 section 3.

The drawings and the information shown thereon are copyrighted by TRINITY HIGHWAY PRODUCTS, LLC, and the sole property of TRINITY HIGHWAY PRODUCTS, LLC. Neither the drawings nor such information is to be used for any purpose other than that for which it was specifically furnished from TRINITY HIGHWAY PRODUCTS, LLC, nor is any reproduction authorized without written permission.

CRP - LOWER POST - 6' CASS 350 TERMINAL POST POST - SOIL PLATE 6'-0" EMBEDMENT		SPEC:	A123
		SHIP WT:	205 lb
DRW:	EAS	6/25/2014	
CHK:	RMH	6/25/2014	
SHT:	1 OF 1	SIZE:	B
DWG NO:	33099	REV	0

TRINITY HIGHWAY PRODUCTS, LLC

033099.dwg