

FiberLok Sign System

File: 8250-2-2-5

Location: Highway 16 (West and East of Vegreville)

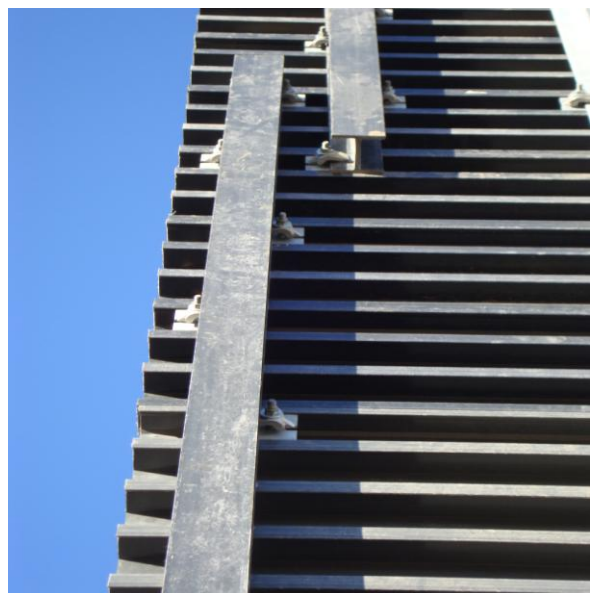
Installed: November 2008

Evaluated: November 26, 2008

West of Vegreville (EBL)



Front and back of directional sign

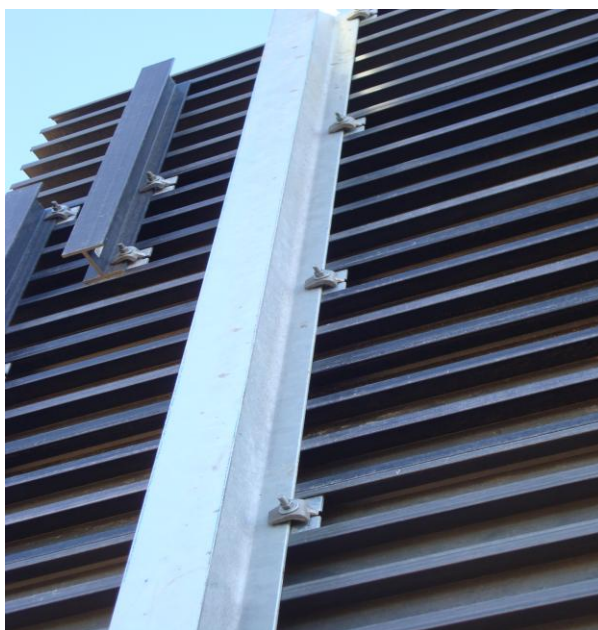


Close-up of sign panel connections, 12" and 24" panels

East of Vegreville (WBL)



Front and back of directional sign



Close-up of sign panel connections, 12" and 24" panels

The FiberLok Sign System looks good at this location. The weather conditions were very windy; the sign panel was intact with no evidence of slipping. The sign support posts are steel not fiberglass. This product will be discussed at the new products evaluation committee meeting on December 4, 2008 it is recommended that the FiberLok Sign System be advanced to the Trial Products category of the Alberta Transportation Products List.

Joe Filice
cc: Roger Skirrow
Richard Chow