

Location: Deerfoot Trail (N. of McKnight Blvd to S. of City of Calgary NCL)  
Applied: September 2010  
Evaluated: October 6, 2010

**SBL – Emergency Calls Sign**



E. edge line



Skip line

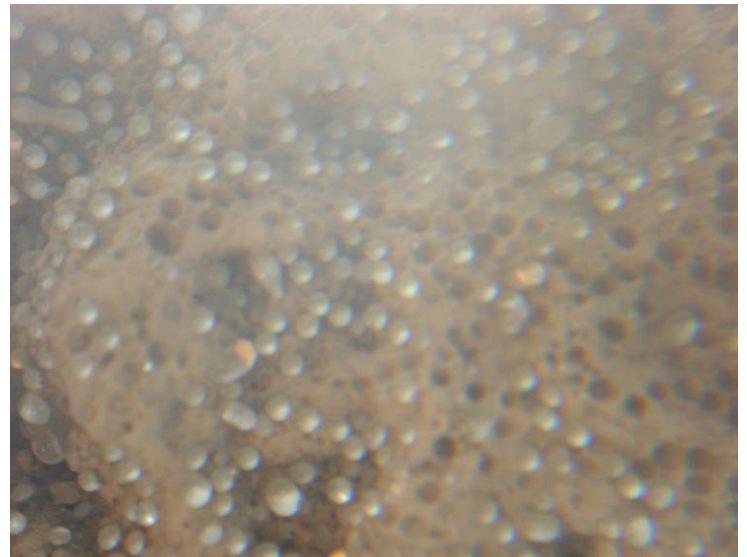
Retro readings East yellow edge line: 214, 211, 214, 218, 198, 209, 213, 210, 217, 212

–Average: 212 Mcd

Retro readings white skip line: 310, 302, 313, 297, 291, 315, 271, 270, 270, 305

– Average: 295 Mcd

**Magnification**



Very good glass bead retention at this time (plenty of glass beads present)

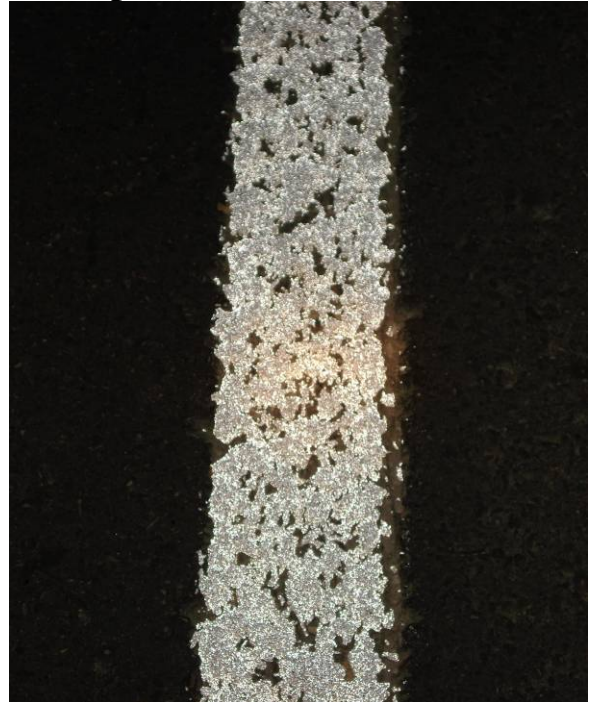
The Pathfinder Marking System looks excellent at this time. These markings have very good glass bead retention and are providing excellent delineation. The retro-reflectivity is a bit low; this could be attributed to the lines having a film of dust on them. The retro-reflectivity should improve as the lines become cleaner.



## SBL – University of Calgary Sign (near first overpass)



W. edge line



Skip line

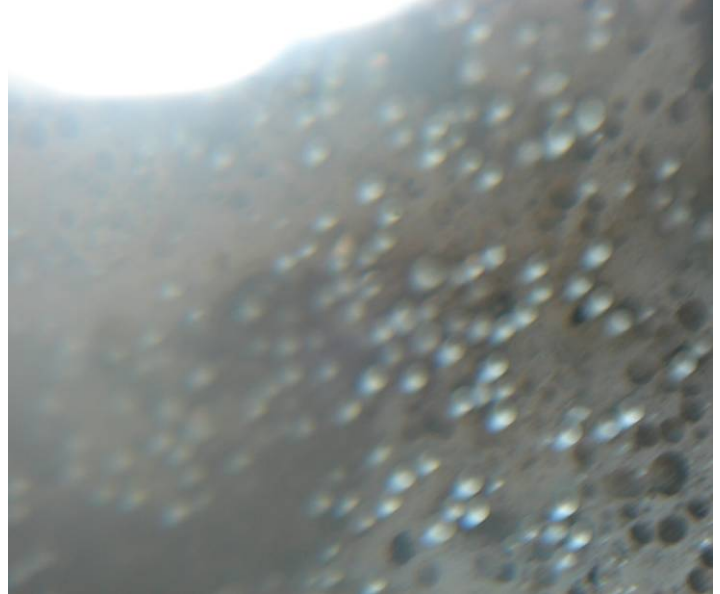
Retro readings West white edge line: 312, 284, 287, 285, 288, 283, 289, 292, 291, 284

–Average: 290 Mcd

Retro readings white skip line: 369, 334, 314, 351, 316, 309, 332, 321, 317, 307

– Average: 327 Mcd

### Magnification



Plenty of glass beads in MMA material

Pathfinder markings are providing excellent delineation at this time. The retro-reflectivity of the lines is a bit low and should improve as the lines become cleaner.

## Overall view at night



Pathfinder markings are very reflective, providing positive delineation

Pathfinder should prove successful at this location as it has on highway 22 at Cochrane. Evaluation should be conducted in the spring of 2011 to determine its durability after one winter.

Joe Filice

cc: Roger Skirrow  
Richard Chow  
Olivier Lahey