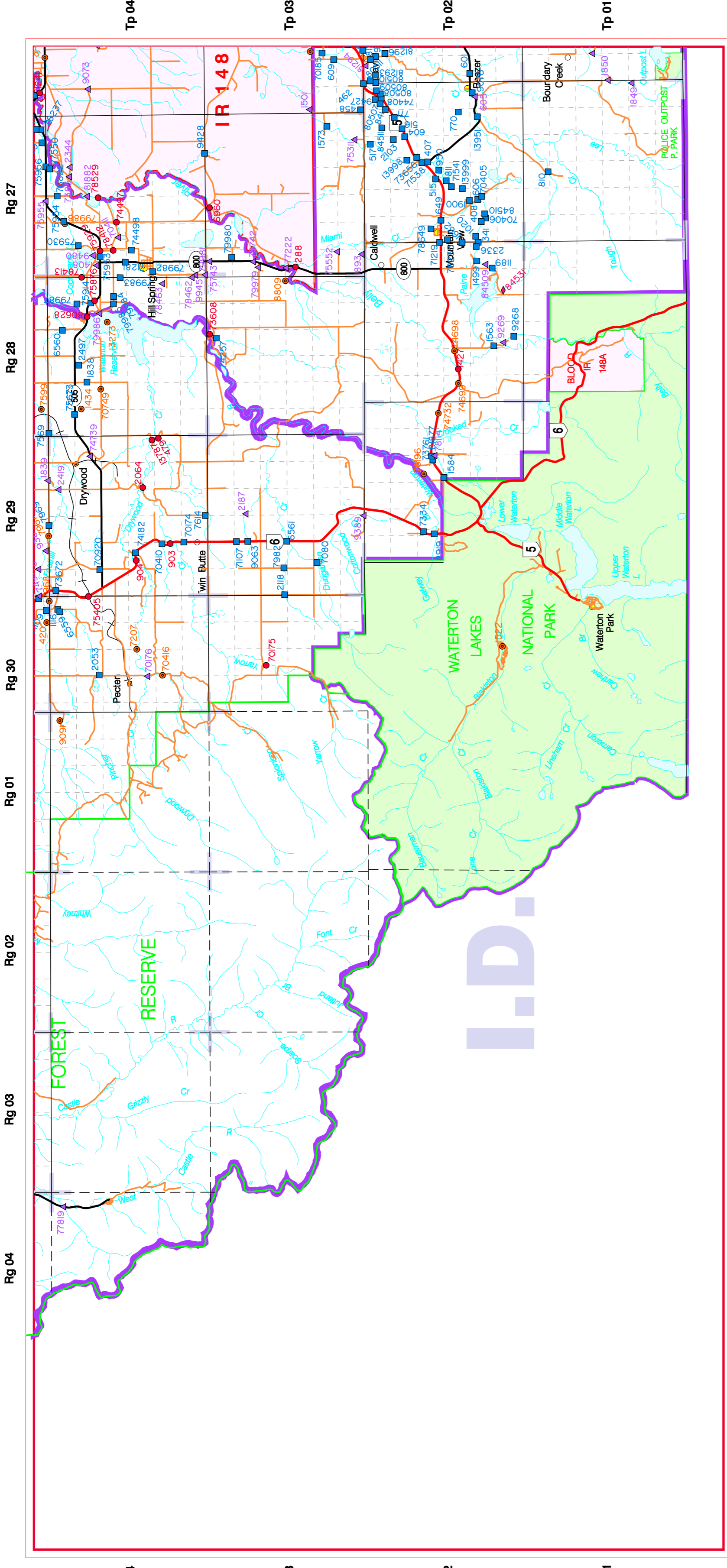
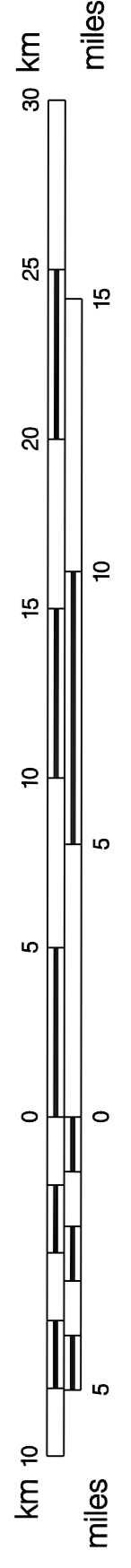


**IMPROVEMENT DISTRICT - (ID 04)  
WATERTON LAKES NATIONAL PARK**



- PRIMARY HIGHWAY
- SECONDARY HIGHWAY
- LOCAL ROAD
- CITY
- TOWN
- VILLAGE
- HAMLET /LOCALITY
- RAILWAY /RAIL STATION

- MAJOR BRIDGE
- STANDARD BRIDGE
- CULVERT
- SIGN STRUCTURE
- WATERCOURSE
- NON EXISTENT
- PROVISIONAL
- CLOSED



Produced by Bridge Engineering Section, Alberta, Infrastructure and Transportation, on digital base provided by Land Information Division, Provincial Mapping Branch, Environmental Protection, © 2007. The information presented is subject to change without notice. Not intended for duplication or resale.