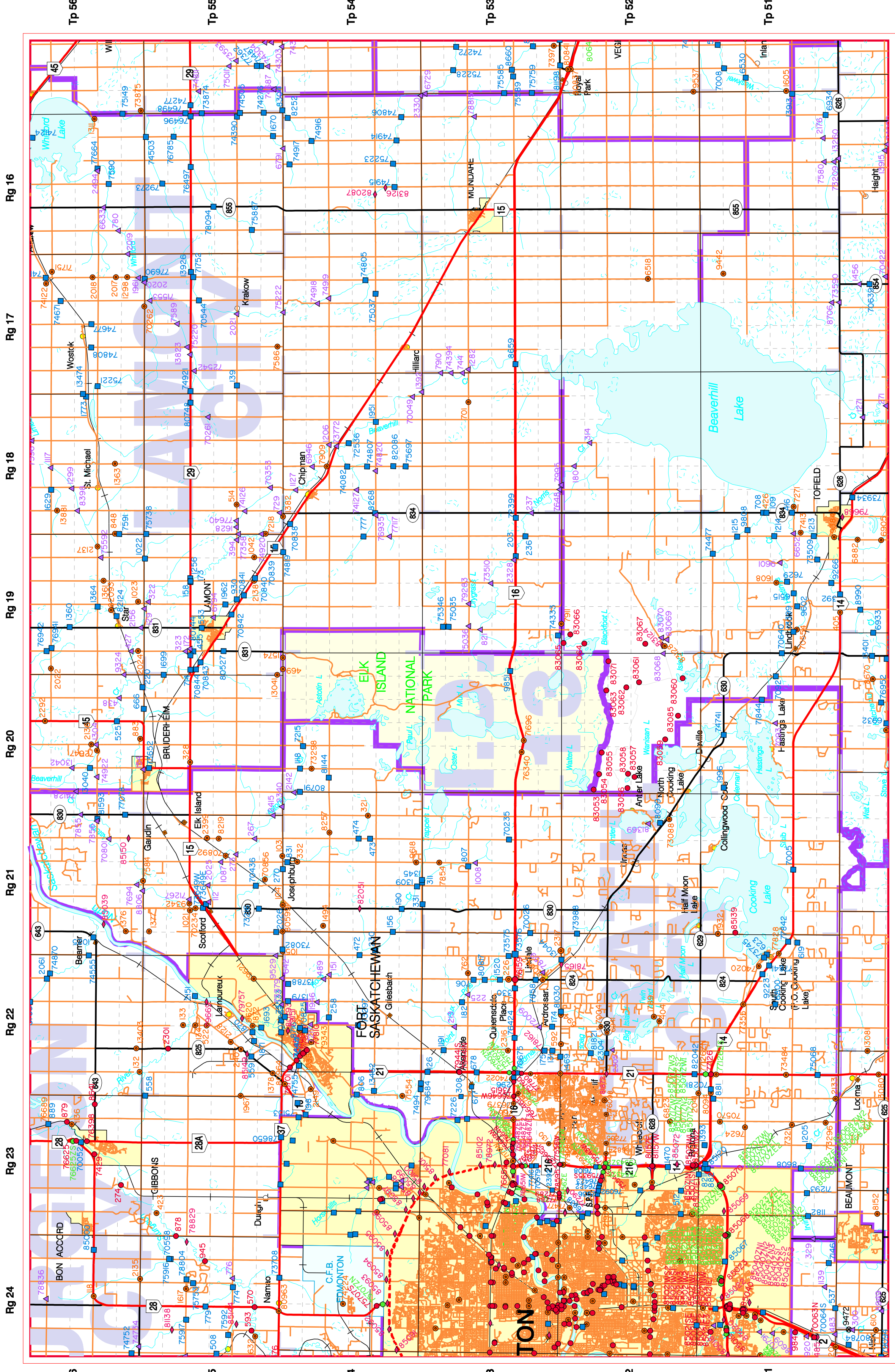
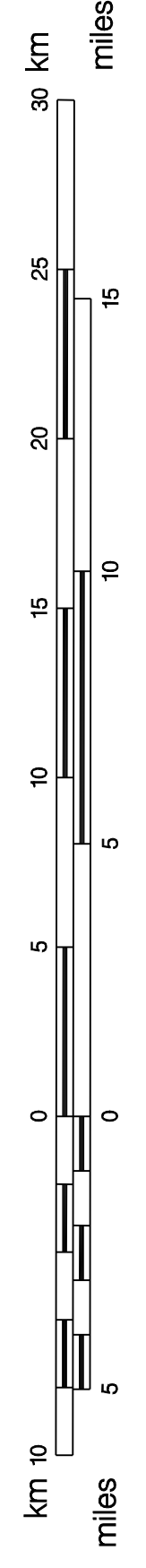


**IMPROVEMENT DISTRICT - (ID 13)  
ELK ISLAND NATIONAL PARK**



- PRIMARY HIGHWAY
- SECONDARY HIGHWAY
- LOCAL ROAD
- CITY
- TOWN
- VILLAGE
- HAMLET / LOCALITY
- RAILWAY / RAIL STATION

- MAJOR BRIDGE
- STANDARD BRIDGE
- CULVERT
- SIGN STRUCTURE
- WATERCOURSE
- NON EXISTENT
- PROVISIONAL
- CLOSED



Produced by Bridge Engineering Section, Alberta Infrastructure and Transportation on digital base provided by Land Information Division, Provincial Mapping Branch, Environmental Protection © 2007. The information presented is subject to change without notice. Not intended for duplication or resale.