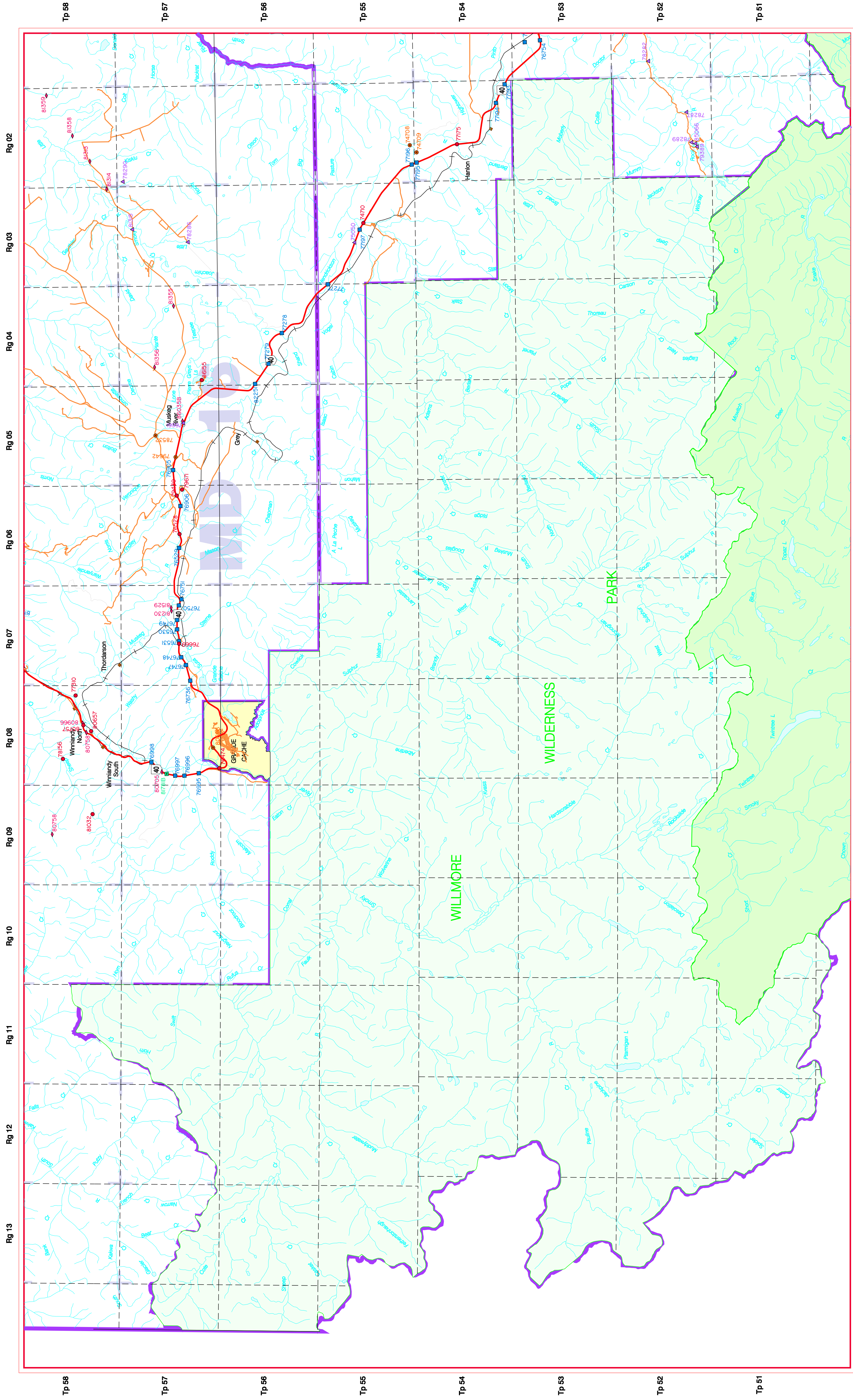
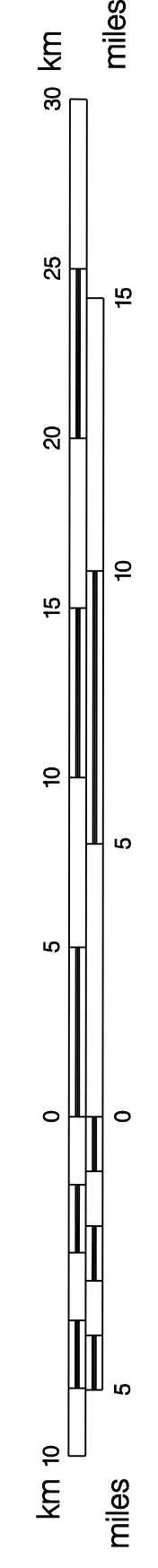
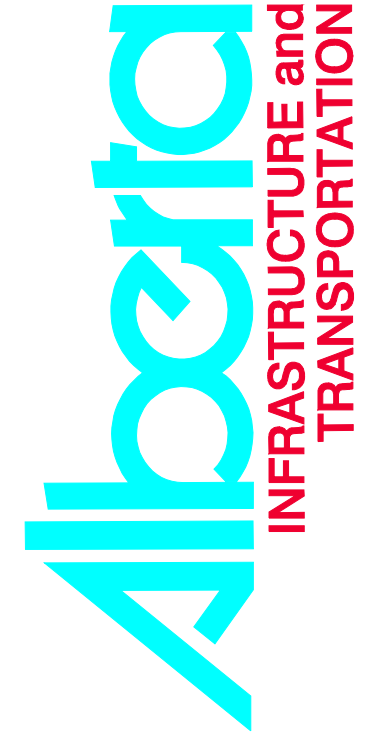


**IMPROVEMENT DISTRICT - (ID 25)
WILLMORE WILDERNESS PARK**



- PRIMARY HIGHWAY
- SECONDARY HIGHWAY
- LOCAL ROAD
- CITY
- TOWN
- VILLAGE
- HAMLET /LOCALITY
- RAILWAY /RAIL STATION

- MAJOR BRIDGE
- STANDARD BRIDGE
- CULVERT
- SIGN STRUCTURE
- WATERCOURSE
- NON EXISTENT
- PROVISIONAL
- CLOSED



Produced by Bridge Engineering, Section, Alberta Infrastructure and Transportation on digital base
 Provided by Land Information Services, Alberta Infrastructure and Transportation
 The information presented is subject to change without notice. No liability for duplication or resale.