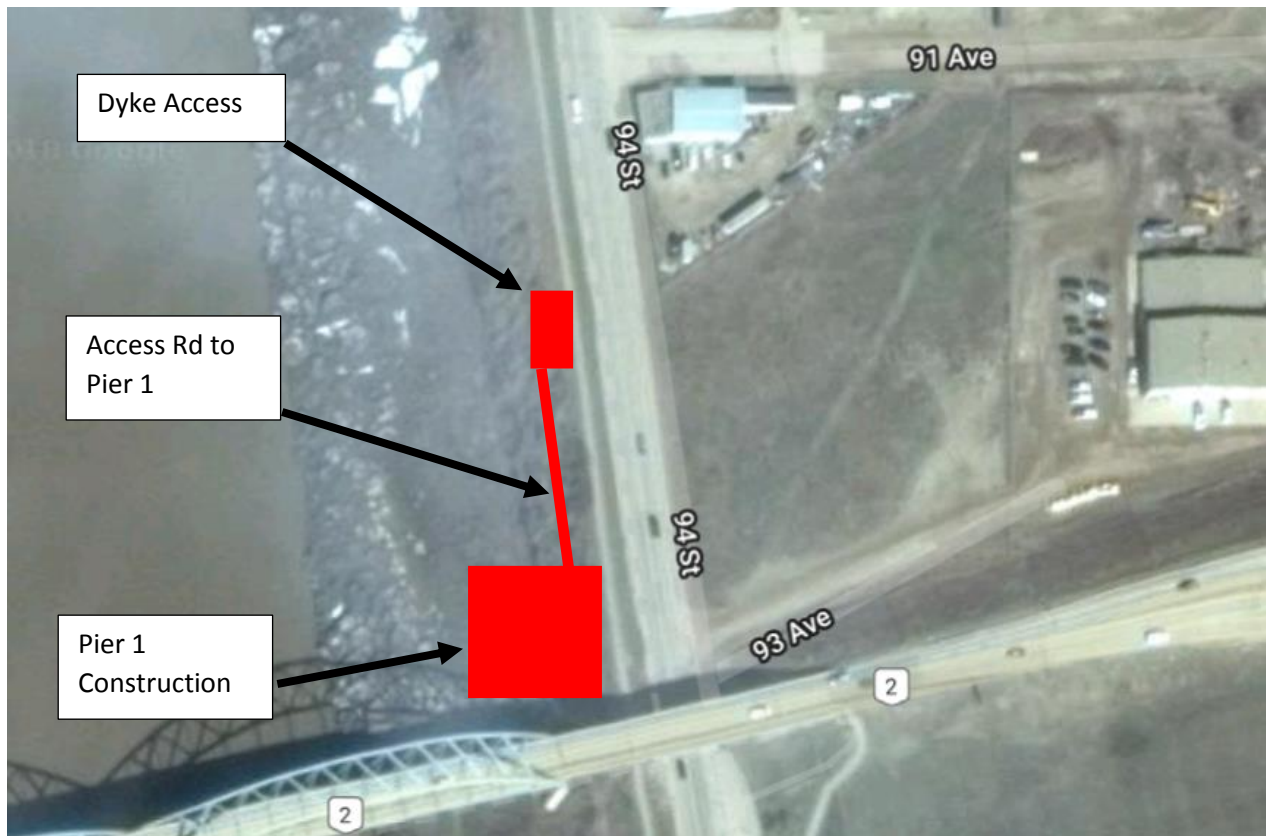


As part of the ongoing construction for the Peace River Bridge, an access road has been built through the dyke, just north of the existing bridge. While a ramp over the dyke could be built to carry trucks and other equipment to the area, it would encroach into one lane on 94 Street, causing significant traffic impacts in the area, leaving that street operating with one lane, alternating traffic for several months. For this reason, an access road for the contractor will go through the dyke instead, to maintain two-way traffic on 94 Street with minimal disruptions.



This new access through the dyke includes a monitoring plan that was put in place to adapt quickly to changing river conditions. Equipment and material are on site to reinstate the dyke within hours if river conditions change. It's estimated to take between six to eight hours to reinstate the dyke.

The dyke will be reinstated at least three days before the ice front reaches town. Access through the dyke will be re-established after the water levels recede. Throughout the summer, Alberta Transportation will closely monitor river levels and trends with information provided by Alberta Environment and Parks and BC Hydro.