

SCHEDULE 8

EXISTING INFRASTRUCTURE

1. GENERAL

1.1 Capitalized Terms

Capitalized terms used in this Schedule have the definitions as set out in the Agreement to Design, Build, Finance and Operate Southwest Calgary Ring Road (the “**DBFO Agreement**”) between Her Majesty the Queen in right of Alberta and the Contractor, as defined therein, unless expressed otherwise.

1.2 DBFO Agreement Reference

This Schedule is referenced in sections 1.1 and 1.3 of the DBFO Agreement.

2. GENERAL DESCRIPTION

2.1 Roadways and Associated Drainage Facilities and Associated Appurtenances

The Existing Infrastructure, described generally below, includes the following bridges and associated roadway facilities, drainage facilities and appurtenances:

- (a) Highway 8 bridge structure over Elbow River (Alberta Transportation Bridge File Number 02143); and
- (b) Calgary Ring Road Northbound bridge structure over Fish Creek (Alberta Transportation Bridge File Number 375).

3. DRAWINGS

The Existing Infrastructure is as shown on Drawings 8-1-02-01SW to 8-1-02-02SW inclusive of Appendix 1 to this Schedule and encompasses the bridges and associated roadway facilities, drainage facilities and appurtenances.

4. DRAWINGS PREVAIL OVER DESCRIPTIONS

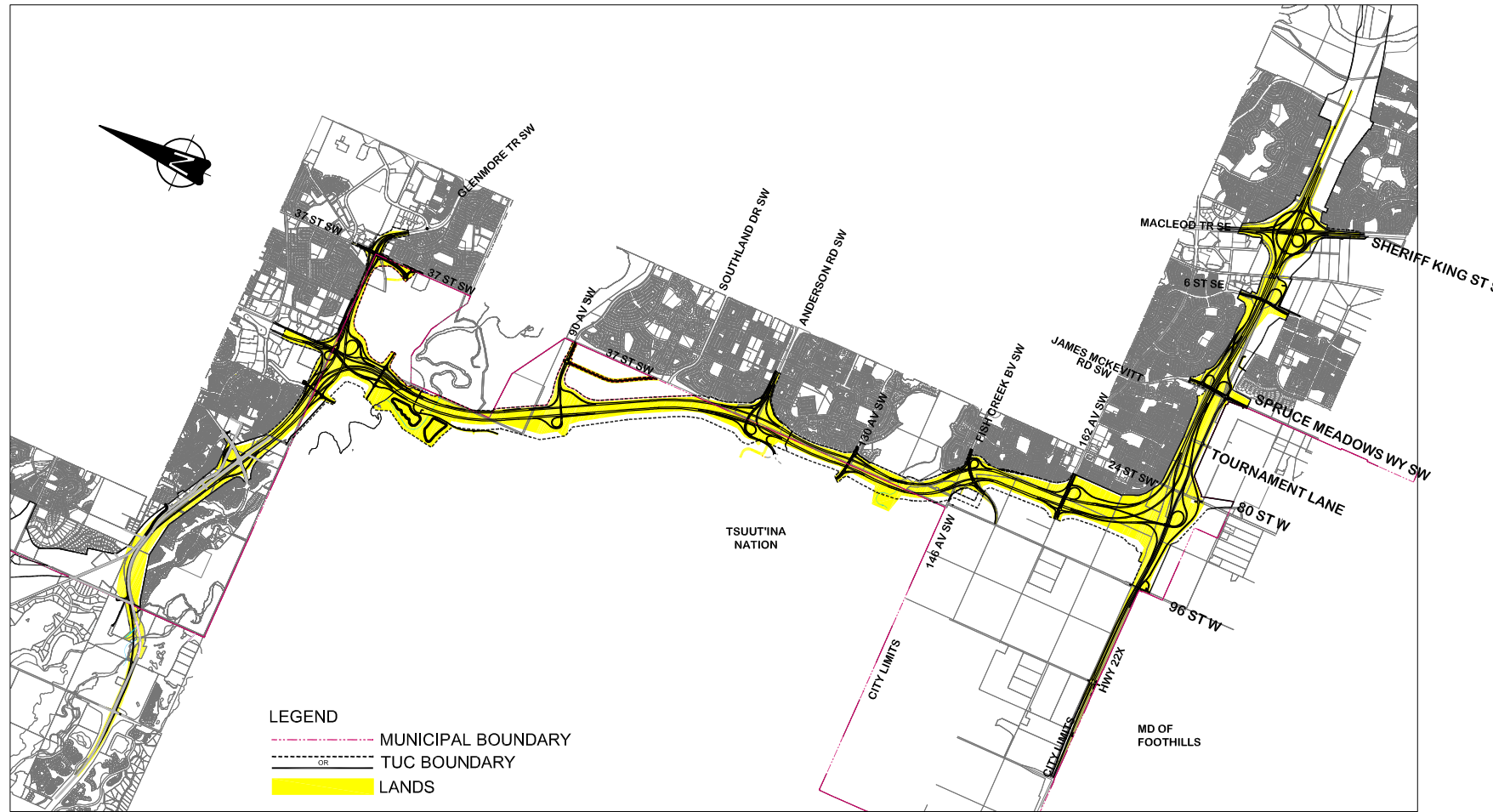
In the event of any inconsistency between the descriptions of the Existing Infrastructure at Section 2, above, and the drawings included as Appendix 1, the drawings at Appendix 1 shall govern.

**SCHEDULE 8 – DBFO AGREEMENT
EXECUTION VERSION**

**Appendix 1
(Existing Infrastructure Drawings 8-1-01-01SW to 8-1-02-02SW)**

8-1-01-01SW..... Cover Sheet
8-1-01-02SW Drawing Index
8-1-02-01SW..... Highway 8 over Elbow River
8-1-02-02SW..... Calgary Ring Road over Fish Creek

DRAWING 8-1-01-01SW
 HIGHWAY 201
 CONTRACT 16834
 DESCRIPTION SCHEDULE 8
 PHOTO
 DATE
 BY
 SURVEYED
 DEPARTMENT BAR CODE



**DESIGN, BUILD, FINANCE
 AND OPERATE
 SOUTHWEST CALGARY RING ROAD
 CALGARY, ALBERTA, CANADA**
**DBFO AGREEMENT
 SCHEDULE 8
 EXISTING INFRASTRUCTURE
 DRAWINGS**

SCALE

KEY MAP

CONSULTANT
CH2MHILL.
ISL Engineering and Land Services
 JOB No. 667664

REV	DATE	REVISION	BY
0	2016-05-04	ISSUED FOR ADDENDUM 18	JB
	DATE	LOCATION	SITE
	2016-05-04	MCP	

SOUTHWEST CALGARY RING ROAD
 SCHEDULE 8
 EXISTING INFRASTRUCTURE
 COVER SHEET

CONTRACT 16834	HIGHWAY 201	SHEET 1 of 2	DRAWING 8-1-01-01SW
-------------------	----------------	-----------------	------------------------

DRAWING 8-1-01-02SW
 HIGHWAY 201
 CONTRACT 16834
 DESCRIPTION SCHEDULE 8
 PHOTO
 DATE
 BY
 SURVEYED
 DEPARTMENT BAR CODE

DRAWING INDEX		
8-1-01-01SW	1 of 1	COVER SHEET
8-1-01-02SW	2 of 2	DRAWING INDEX
EXISTING INFRASTRUCTURE		
8-1-02-01SW	1 of 2	HIGHWAY 8 OVER ELBOW RIVER
8-1-02-02SW	2 of 2	CALGARY RING ROAD OVER FISH CREEK

SCALE

KEY MAP

CONSULTANT

CH2MHILL



JOB No. 667664

REV	DATE	REVISION	BY
0	2016-05-04	ISSUED FOR ADDENDUM 18	JB

SOUTHWEST CALGARY RING ROAD
 SCHEDULE 8
 EXISTING INFRASTRUCTURE

DRAWING INDEX

CONTRACT	HIGHWAY	SHEET	DRAWING
16834	201	2 of 2	8-1-01-02SW

DEPARTMENT BAR CODE

SURVEYED

BY

DATE

PHOTO

DESCRIPTION

SCHEDULE 8

CONTRACT

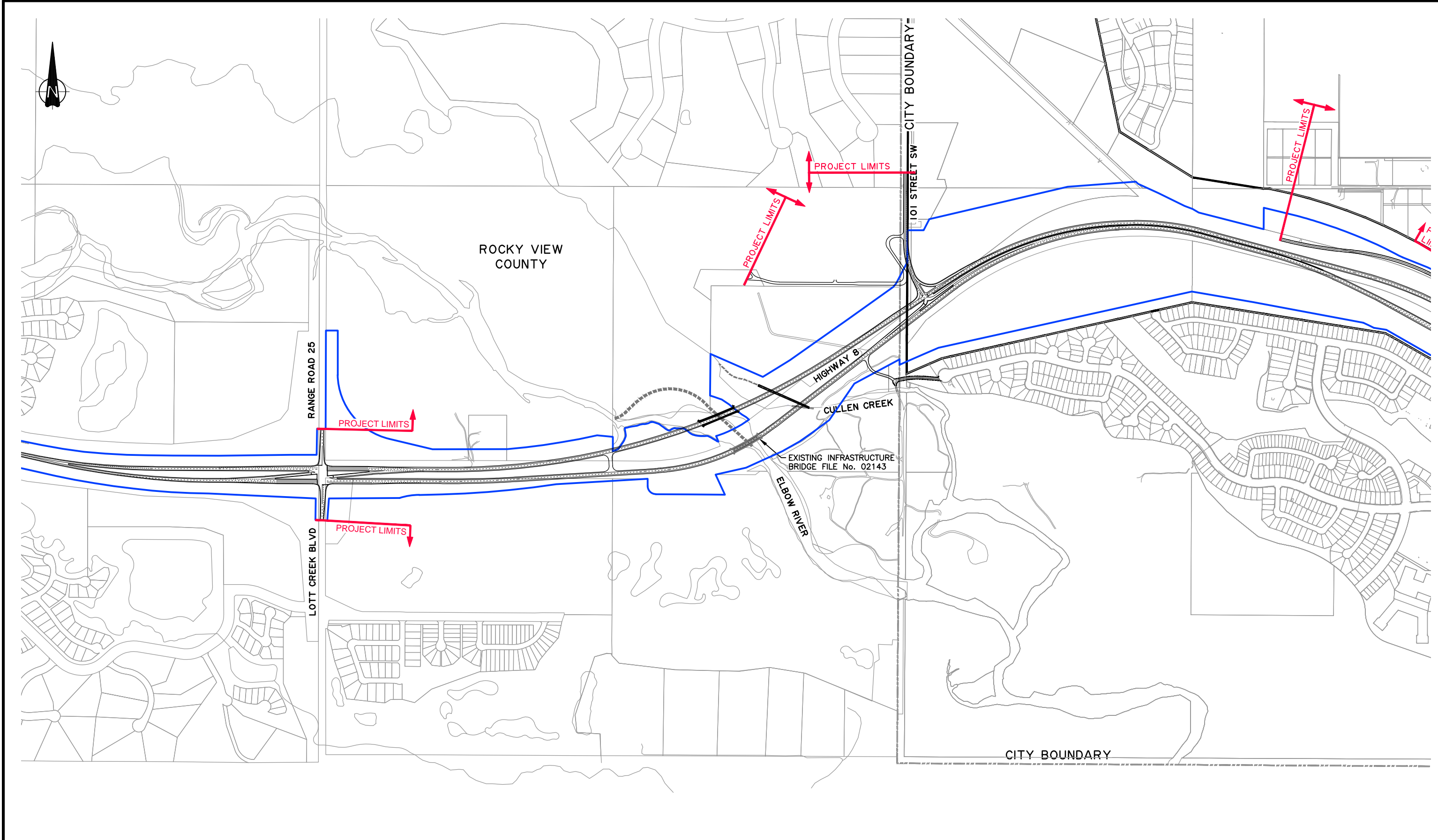
16834

HIGHWAY

201

DRAWING

8-1-02-01SW



LEGEND:

- TUC BOUNDARY
- PROPOSED TUC BOUNDARY
- ROAD RIGHT OF WAY
- EXISTING INFRASTRUCTURE
- CITY OF CALGARY BOUNDARY
- NEW INFRASTRUCTURE - STAGE I BRIDGES
- WATERCOURSE REALIGNMENT

SCALE

0m 1:5000 150

PLOTTED ON 227,34"

NOTE: ACTUAL PROJECT LIMITS MAY VARY IN THE DIRECTION INDICATED BY ARROWS SHOWN ON PROJECT LIMIT LABELS.

PROJECT LIMITS

PROJECT LIMITS

KEY MAP

SITE LOCATION

CONSULTANT

CH2MHILL.

ISL Engineering

Job No. 667664

REV	DATE	REVISION	BY
0	2016-05-04	ISSUED FOR ADDENDUM 18	JB
	2016-05-04	LOCATION MCP	
		SITE	

Alberta Transportation

SOUTHWEST CALGARY RING ROAD
SCHEDULE 8
EXISTING INFRASTRUCTURE
HIGHWAY 8 OVER ELBOW RIVER

CONTRACT	HIGHWAY	SHEET	DRAWING
16834	201	1 of 2	8-1-02-01SW

DEPARTMENT BAR CODE

BY

DATE

PHOTO

DESCRIPTION

SCHEDULE 8

CONTRACT

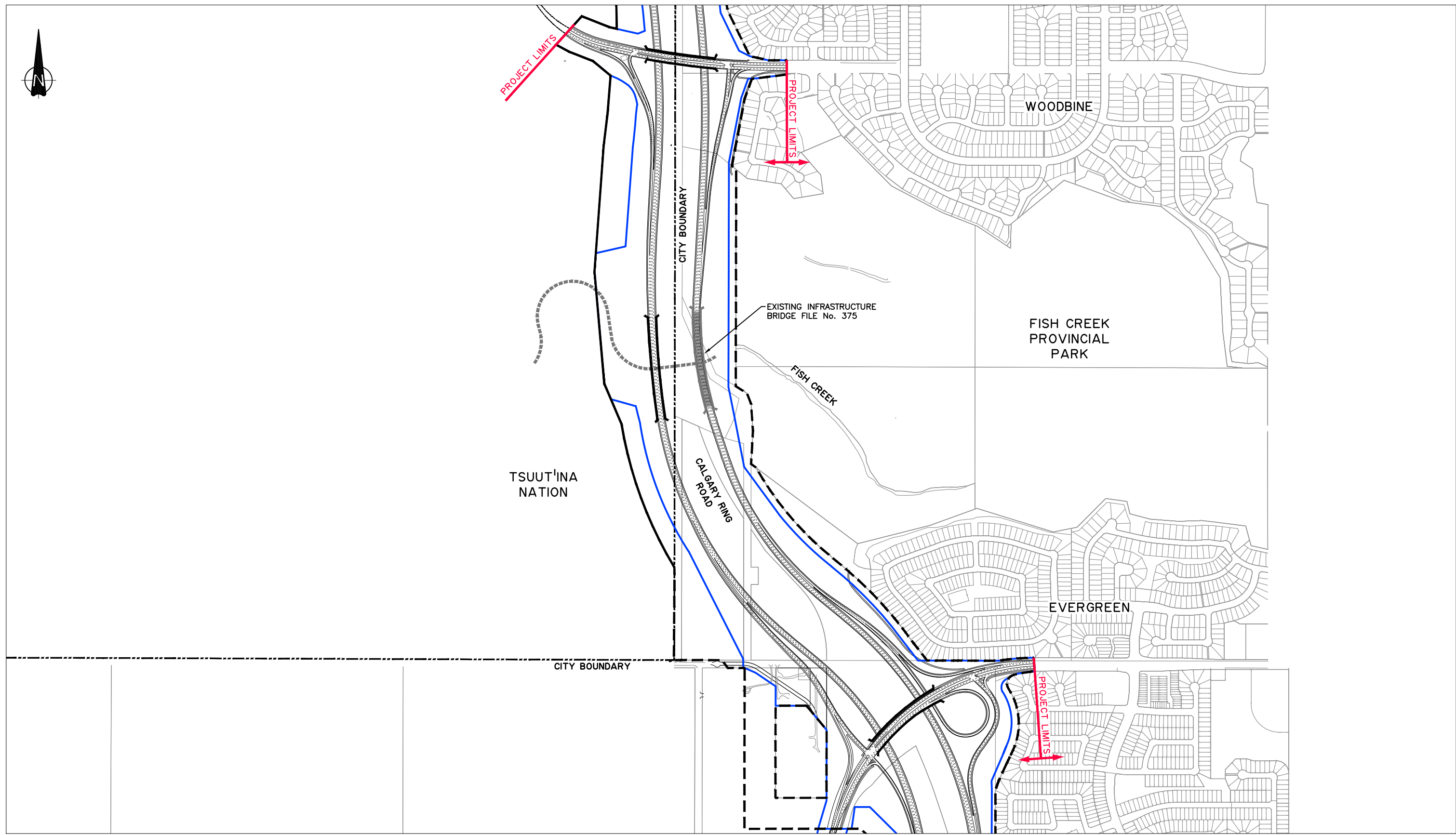
16834

HIGHWAY

201

DRAWING

8-1-02-02SW



LEGEND:

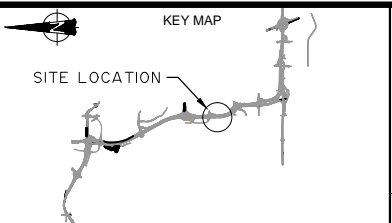
	TUC BOUNDARY		OR		WATERCOURSE REALIGNMENT
	PROPOSED TUC BOUNDARY				
	ROAD RIGHT OF WAY				
	EXISTING INFRASTRUCTURE				
	CITY OF CALGARY BOUNDARY				
	NEW INFRASTRUCTURE - STAGE I BRIDGES				

SCALE
1:5000
0m 150m
PLOTTED ON
22734

NOTE: ACTUAL PROJECT LIMITS MAY VARY IN THE DIRECTION INDICATED BY ARROWS SHOWN ON PROJECT LIMIT LABELS.

PROJECT LIMITS

PROJECT LIMITS



CONSULTANT

CH2MHILL

ISL Engineering
Civil and Land Services

JOB No. 667664

REV	DATE	REVISION	BY
0	2016-05-04	ISSUED FOR ADDENDUM 18	JB
	2016-05-04	LOCATION MCP	
		SITE	

Alberta Transportation

SOUTHWEST CALGARY RING ROAD
SCHEDULE 8
EXISTING INFRASTRUCTURE

CALGARY RING ROAD OVER FISH CREEK

CONTRACT	HIGHWAY	SHEET	DRAWING
16834	201	2 of 2	8-1-02-02SW