

Project Sign Requirements for Municipal Grant-Supported Projects

The government of Alberta provides significant funding to municipalities for capital infrastructure/projects. It is appropriate that signage should be erected to acknowledge the provincial contribution. The priority is to ensure the Alberta government's role in the project is visibly communicated. The goal is to convey visibly and clearly the provincial government involvement.

- Signs should be included on any provincial grant-supported municipal project where construction will last longer than two months.
- Signs should be erected 30 days in advance of construction and remain place at least 30 days after completion.
- Significant/visible projects (Not every project/grant approved requires signage. Projects located in remote or isolated location may not require a sign).
- Any project with an “official opening” with government dignitaries in attendance.
- Major projects over \$1 million shall have a sign.
- Medium projects (\$100,000 to \$1 million) may include a project sign, decal, or fence scrim.
- Smaller projects (less than \$100,000) should include some form of signage (may be generic sign or decal).
- When Government of Alberta signs are erected in conjunction with federal signs, all signs must be the same size of 48”x79” (refer to attachment 2 or section 4.7.9 of Corporate Identity Manual).
- Final proofs for project signs need to be approved by Corporate Products Branch of Public Affairs Bureau before the signs are produced/installed. Suppliers, project managers, contractors, consultants, or municipalities (whoever is ordering the signs) send the final pdf of the design to visual@gov.ab.ca for approval (cc: communications).

More detailed information can be found in section 4.7 of the Corporate Identity Manual (posted October 2013) at publicaffairs.alberta.ca.

Attachments:

1. 8' X 8' project sign
2. 48" X 79" “federal” compatible sign

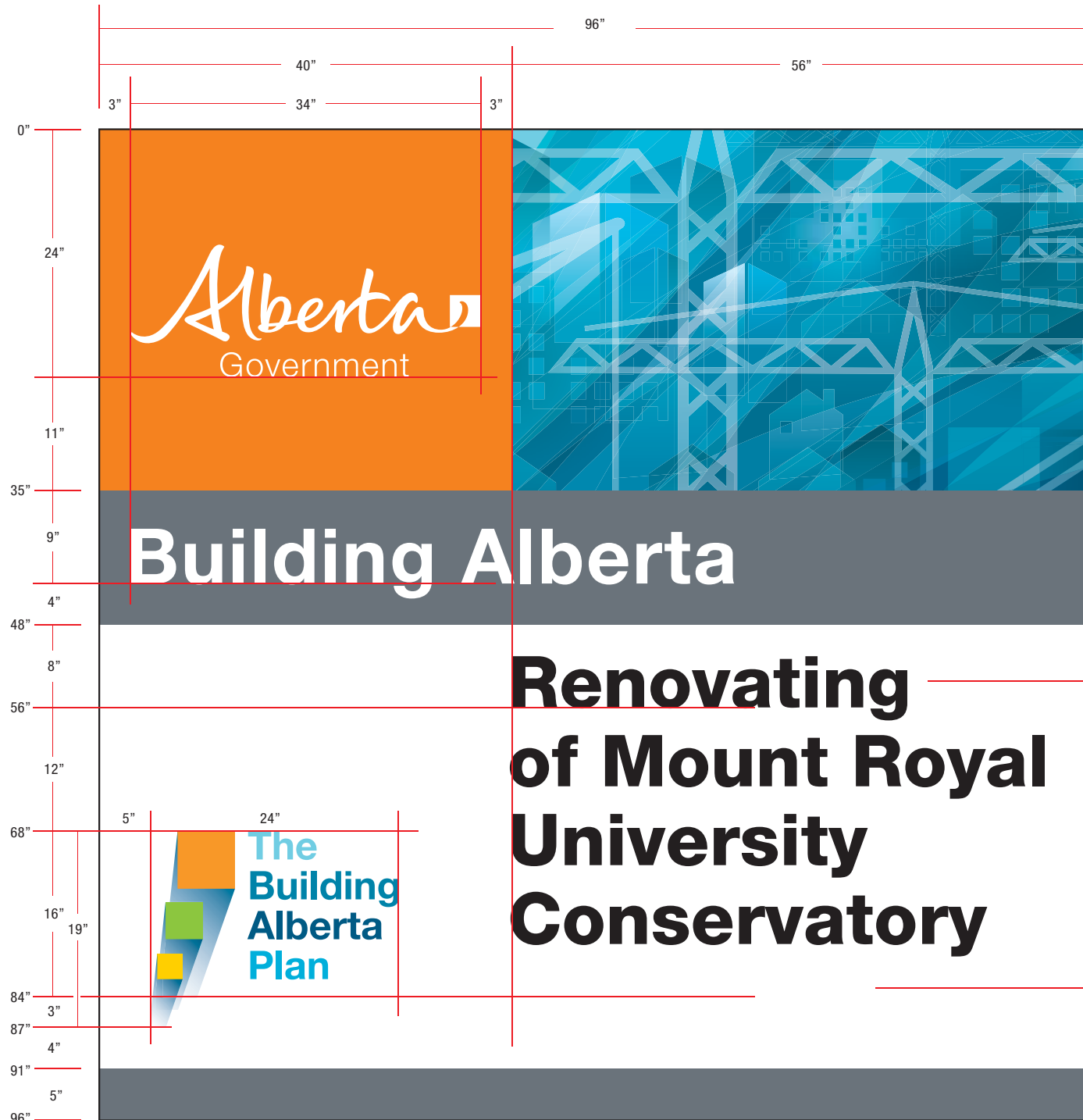
Revised: November 2013



Building Alberta

Renovating of Mount Royal University Conservatory




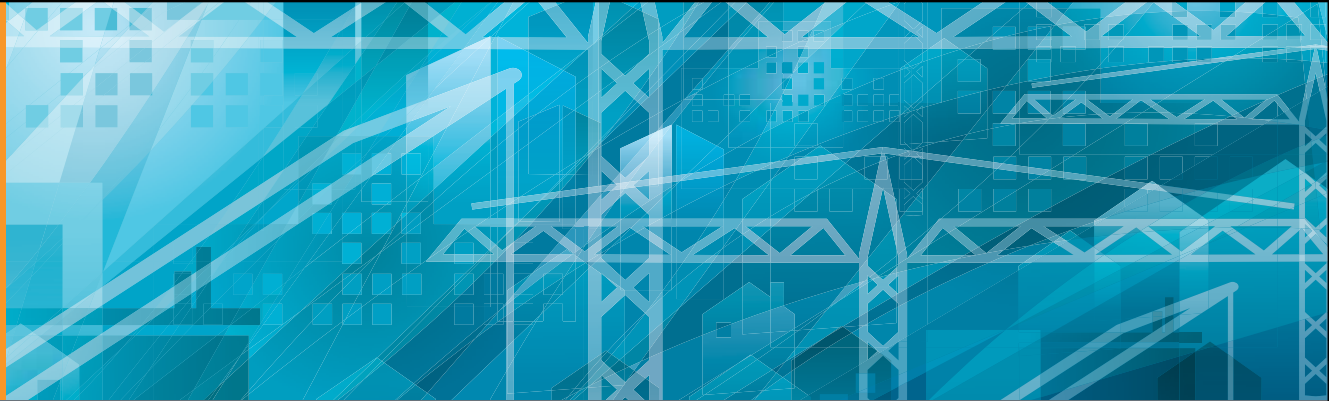


Helvetica Neue 85 Heavy
500pt on 550 leading

Helvetica Neue 65 Medium
200pt on 240 leading

 Sunset
PMS 151
0C/48M/95Y/0K

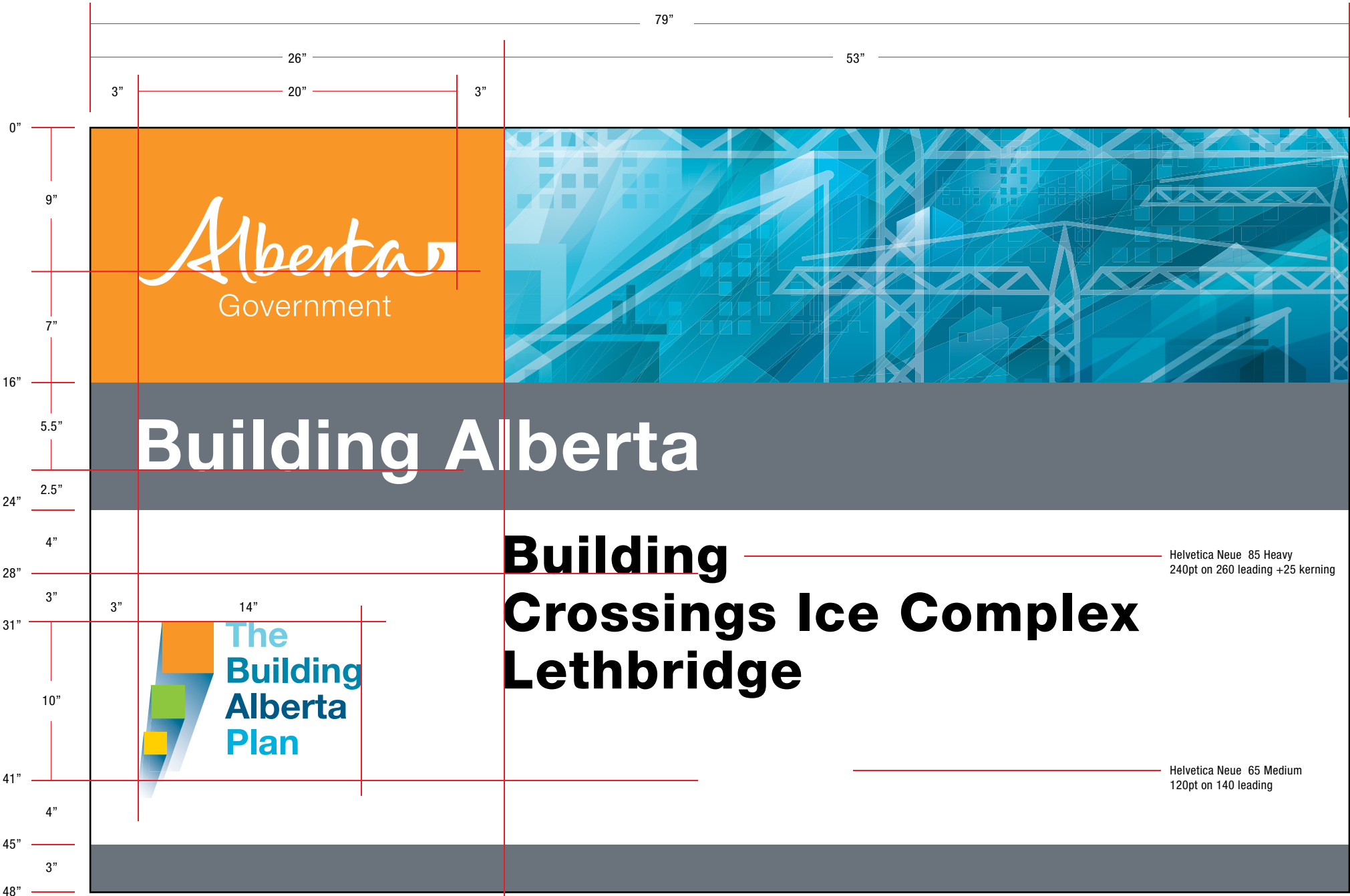
 Stone
PMS 431
11C/1M/0Y/64K



Building Alberta



Building Crossings Ice Complex Lethbridge



79"

26"

53"

3"

20"

3"

0"

9"

Alberta
Government

7"

16"

5.5"

Building Alberta

24"

2.5"

4"

28"

Building
Crossings Ice Complex
Lethbridge

Helvetica Neue 85 Heavy
240pt on 260 leading +25 kerning

3"

3"

14"

The Building
Alberta
Plan

31"

10"

41"

Helvetica Neue 65 Medium
120pt on 140 leading

4"

45"

3"

48"

Sunset
PMS 151
0C/48M/95Y/0K

Stone
PMS 431
11C/1M/0Y/64K