

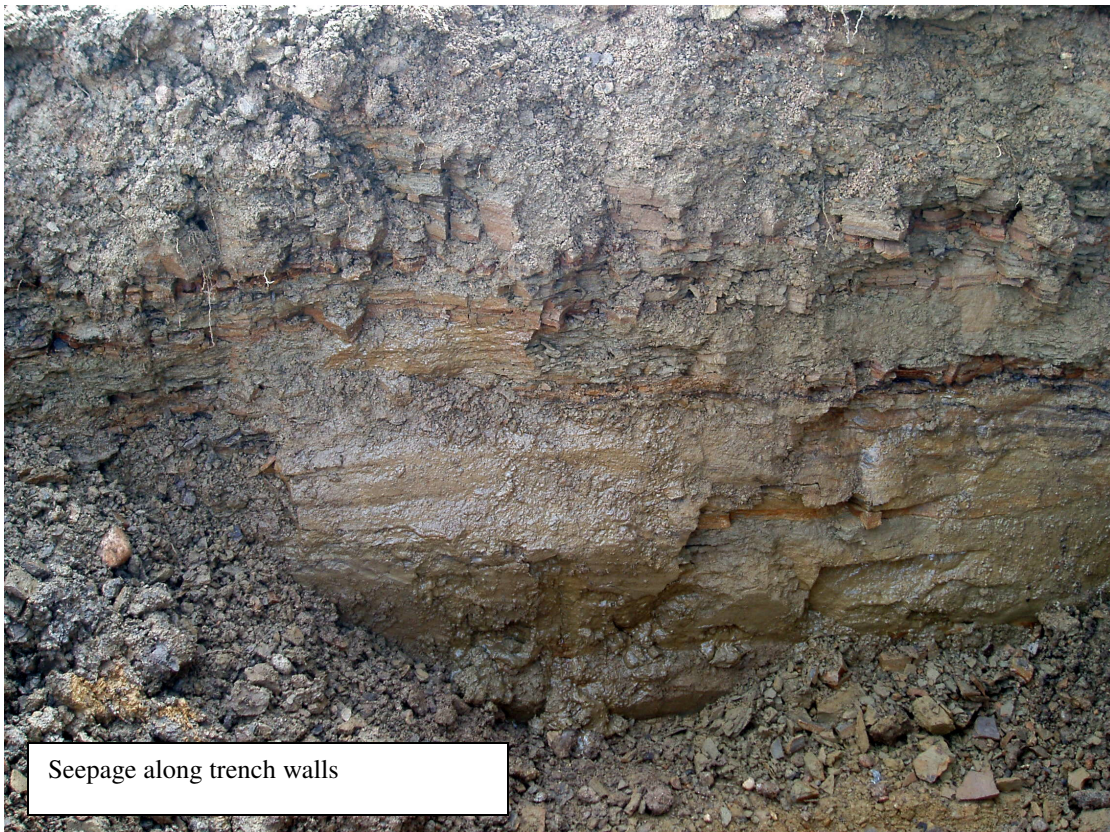


ALBERTA INFRASTRUCTURE & TRANSPORTATION CENTRAL REGION
Geohazard Assessment Site C6
H881:10 Myrnam Spring Frost Heave Repair





Trench for west ditch drain pipe, looking east (upstream)







Seepage ponded along base of trench,
looking east (upstream)









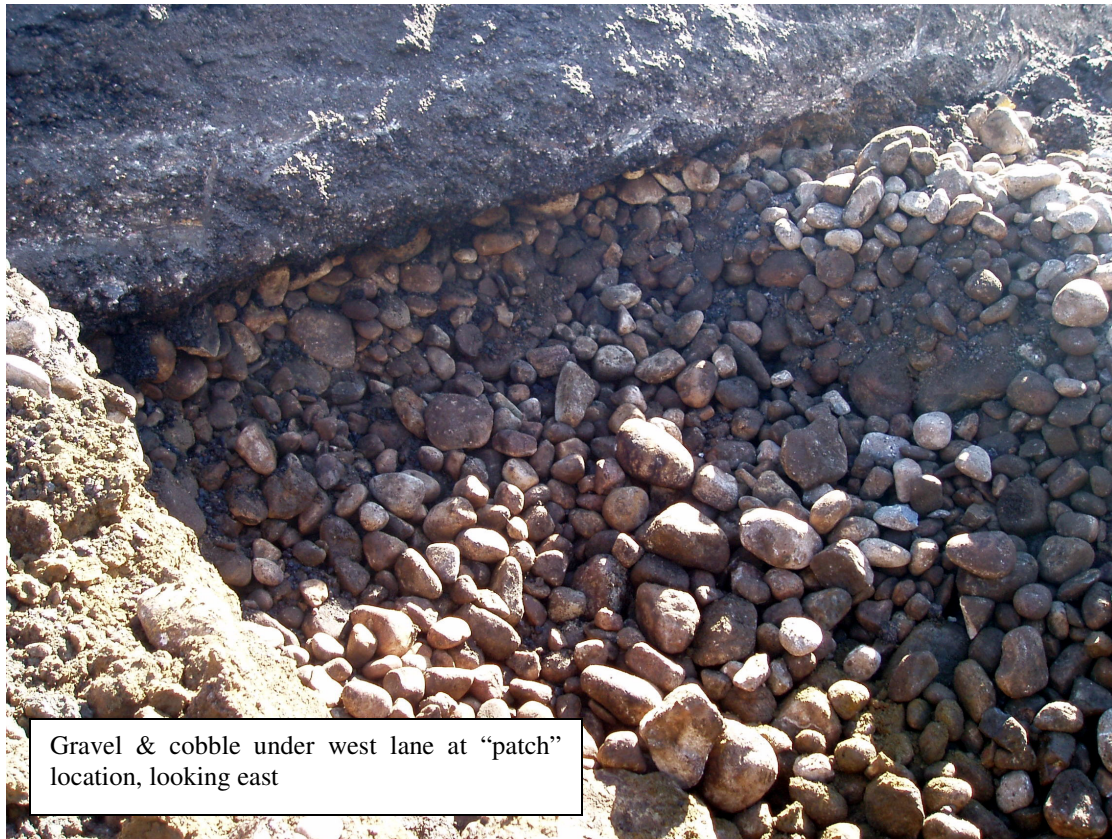
West lane asphalt removal, looking east



West lane excavation, looking north







Gravel & cobble under west lane at "patch" location, looking east



6H:1V transition zone at north end of west lane excavation, looking east









Perforated HDPE drainage pipe in west lane excavation, looking south



Perforated HDPE drainage pipe in west lane excavation, looking north





West lane excavation partially backfilled,
looking south







Seepage flow at outlet of drainage pipe



East lane asphalt removal, looking north





East lane excavation looking west



Burying drainage pipe and backfilling east lane excavation, looking south