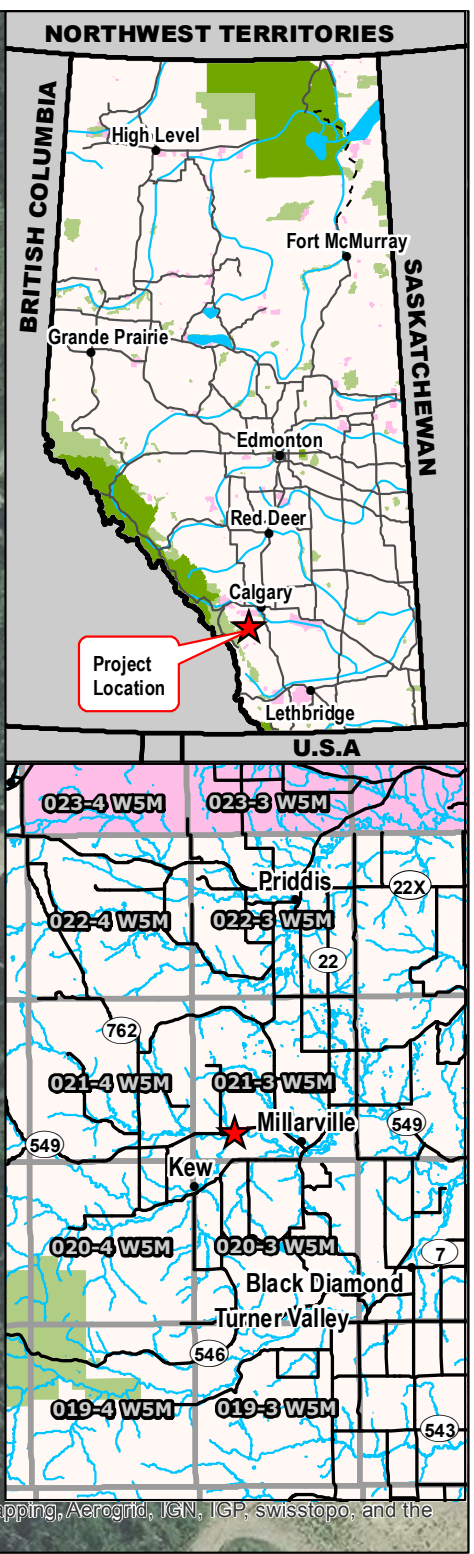
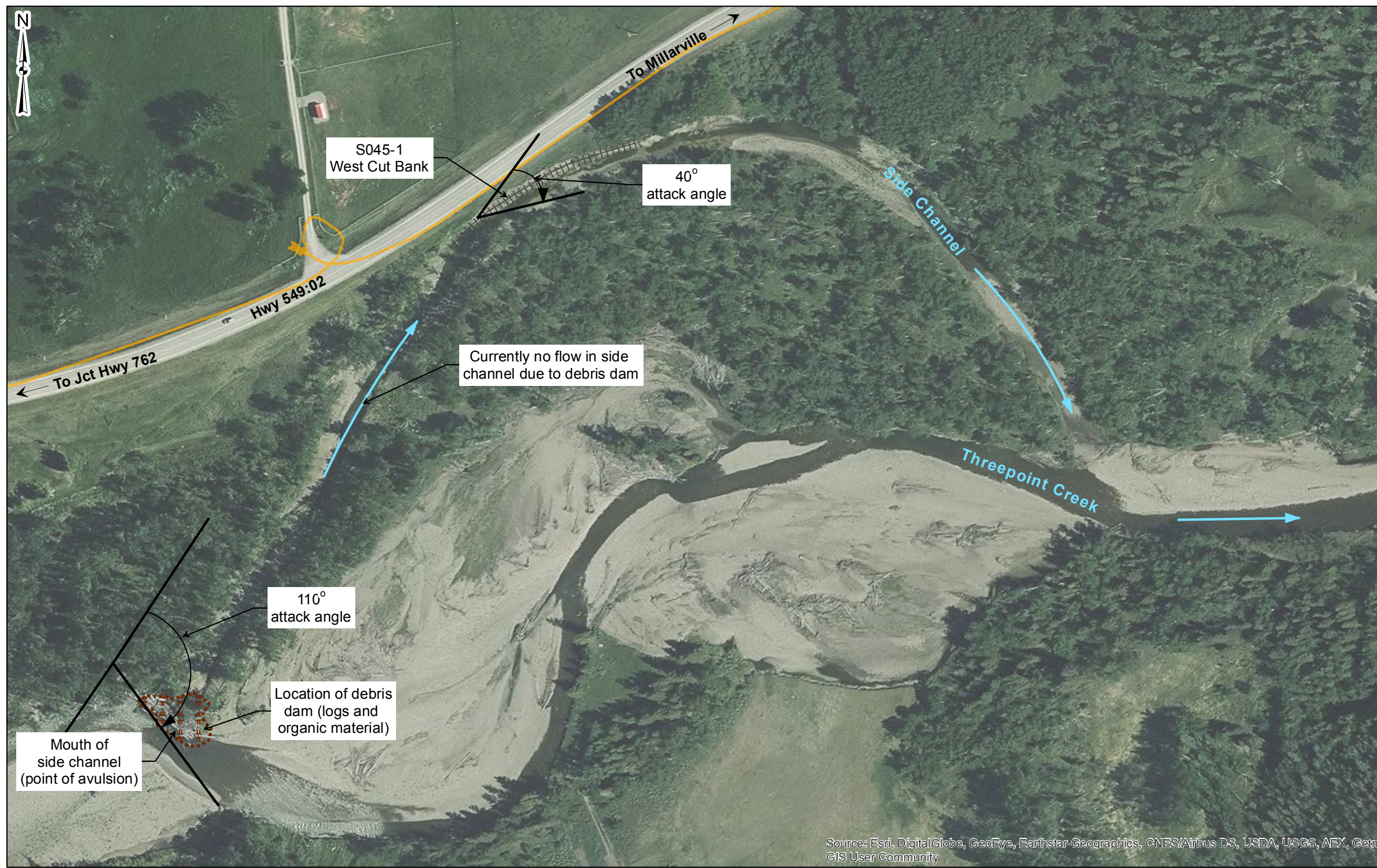


SITE NUMBER AND NAME: S045-I Threepoint Creek		HIGHWAY & KM: 549:02, 12.315	PREVIOUS INSPECTION DATE: May 29, 2017	INSPECTION DATE: May 1, 2018
LEGAL DESCRIPTION: 02-08-021-03 W5M	NAD 83 COORDINATES: UTM Northing Easting 11 5626611 684647		RISK ASSESMENT: PF: 7 CF: 4 TOTAL: 28	
AVERAGE ANNUAL DAILY TRAFFIC (AADT): 900 (east), (Ref No. 65170)			CONTRACTOR MAINTENANCE AREA (CMA): 27	

SUMMARY OF SITE INSTRUMENTATION:	INSPECTED BY:
None	Chris Gräpel (KCB)
	Peter Roy (KCB)
	Alex Frotten (AT)
	Roger Skirrow (AT)
LAST READING DATE: n/a	
PRIMARY SITE ISSUE: Crest of erosion scarp from side channel approximately 6 m from edge of pavement.	
APPROXIMATE DIMENSIONS: Approximately 80 m length of highway, erosion scarp approximately 8 m in height, sloped approximately 0.5H:1V.	
DATE OF ANY REMEDIAL ACTION: None.	

ITEM	CONDITION EXISTS		DESCRIPTION AND LOCATION	NOTICABLE CHANGE FROM LAST INSPECTION	
	YES	NO		YES	NO
Pavement Distress		X			X
Slope Movement	X				X
Erosion	X				X
Seepage	X				X
Culvert Distress		X			
COMMENTS					
No change to erosion scarp for 4 years due to debris down at side channel entrance.					
Side channel is blocked by debris dam (wood debris) deposited in June 2013. Minimal water flow in side channel (estimate 0.1 m ³ /s, or less). If debris dam fails, water will enter side channel again and likely reinitiating of creek erosion. Repair of the erosion should be conducted while debris dam is controlling water in the side channel.					
Repair design is underway to protect the bank from further erosion, that will likely include bank reconstruction and riprap placement.					
In short term, a HTCB should be installed to minimize potential for motorists going over the steep erosion scarp.					

Time: 15:58:27 PM
Date: August 08, 2018
File: \\lnt.kohn.com\ProjData\AED\MA05115A03 ABT Southern Region GRMP\400 Drawings\20182_Section BIMXD\S045_1_180510.mxd



Source: Esri, DigitalGlobe, GeoEye, Earthstar Geographics, CNES/Airbus DS, USDA, USGS, AEX, Getmapping, Aerogrid, IGN, IGP, swisstopo, and the GIS User Community

Legend

- GPS Track (May 1, 2018)
- Cut Bank
- Flow Direction
- Log Jam



NOTES: 1. HORIZONTAL DATUM: NAD83 2. GRID ZONE: UTM Zone 11N 3. IMAGE SOURCE: World Imagery from ESRI ArcGIS Online. Source date January 2015	CLIENT 	PROJECT SOUTHERN REGION GEOHAZARD RISK MANAGEMENT PROGRAM
		TITLE Site Plan S045-1 - Threepoint Creek H549:02, km 10.704 SCALE 1:2,000 PROJECT No. A05115A03 FIG No. 1

Photo 1 Highway and bank above cut bank on secondary channel S45-I. Photo was taken facing northeast on May 1, 2018.



Photo 2 Downstream of eroded slope. No change in creek erosion towards road embankment in approximately 5 years. Photo was taken facing northeast on May 1, 2018.



Photo 3 **Tree debris blocking river from entering creek. No change in tree debris from 2017 inspection. Some additional plant growth. Photo was taken facing northwest on May 1, 2018.**

