

WELCOME TO THE HIGHWAY 43 / 43X INTERCHANGE FUNCTIONAL PLANNING STUDY OPEN HOUSE

Open House Purpose:

- To provide background on the need to protect right-of-way for a future interchange.
- To present interchange design options.
- To solicit feed back to guide the selection of a recommended interchange design.

1

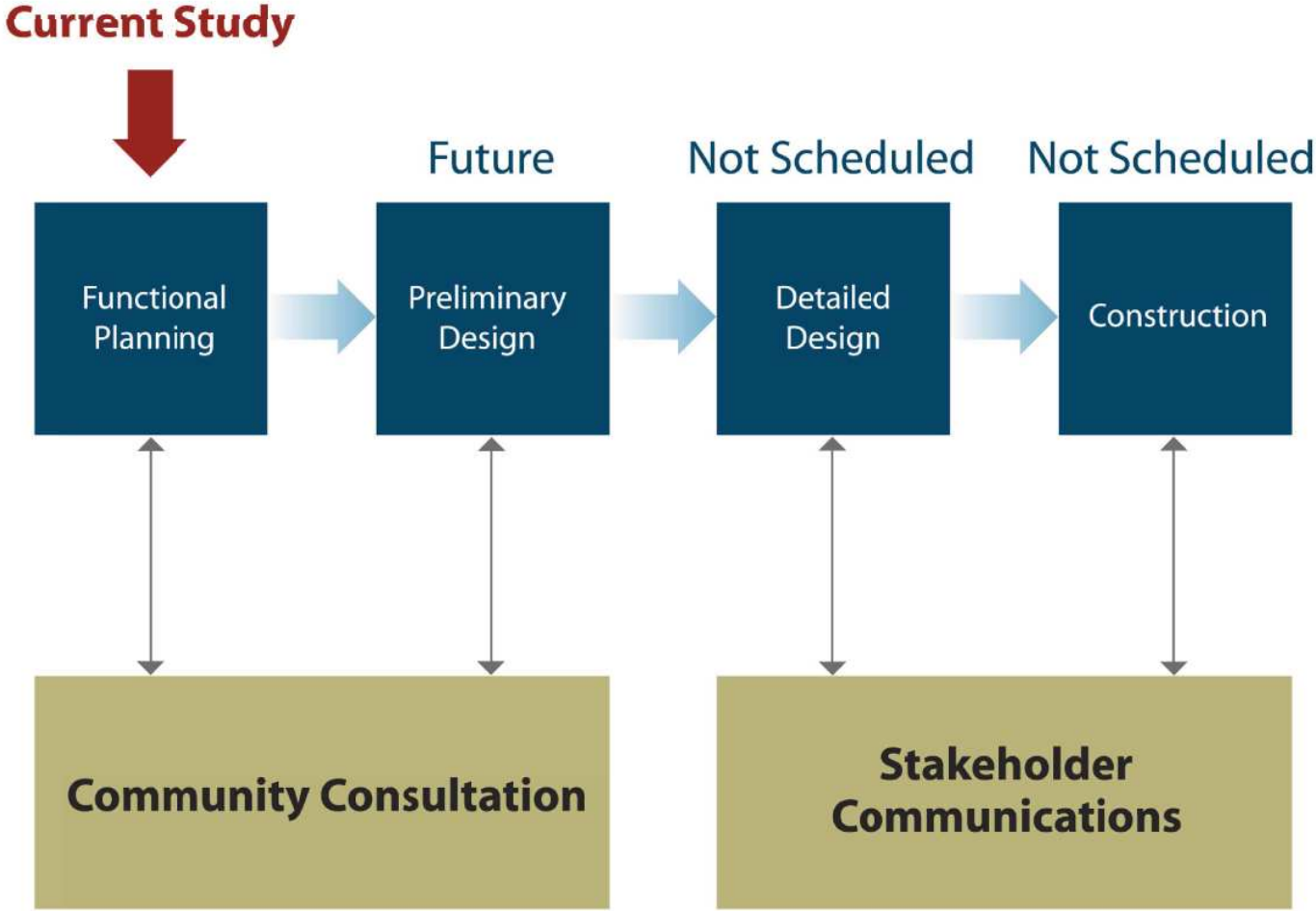
BACKGROUND

- Whitecourt by-pass study was completed in 1984.
- The by-pass alignment was Gazetted (Legally defined by Provincial Government) southwest of Whitecourt.
- Development pressures in the area require that the right-of-way for the interchange be accurately defined.

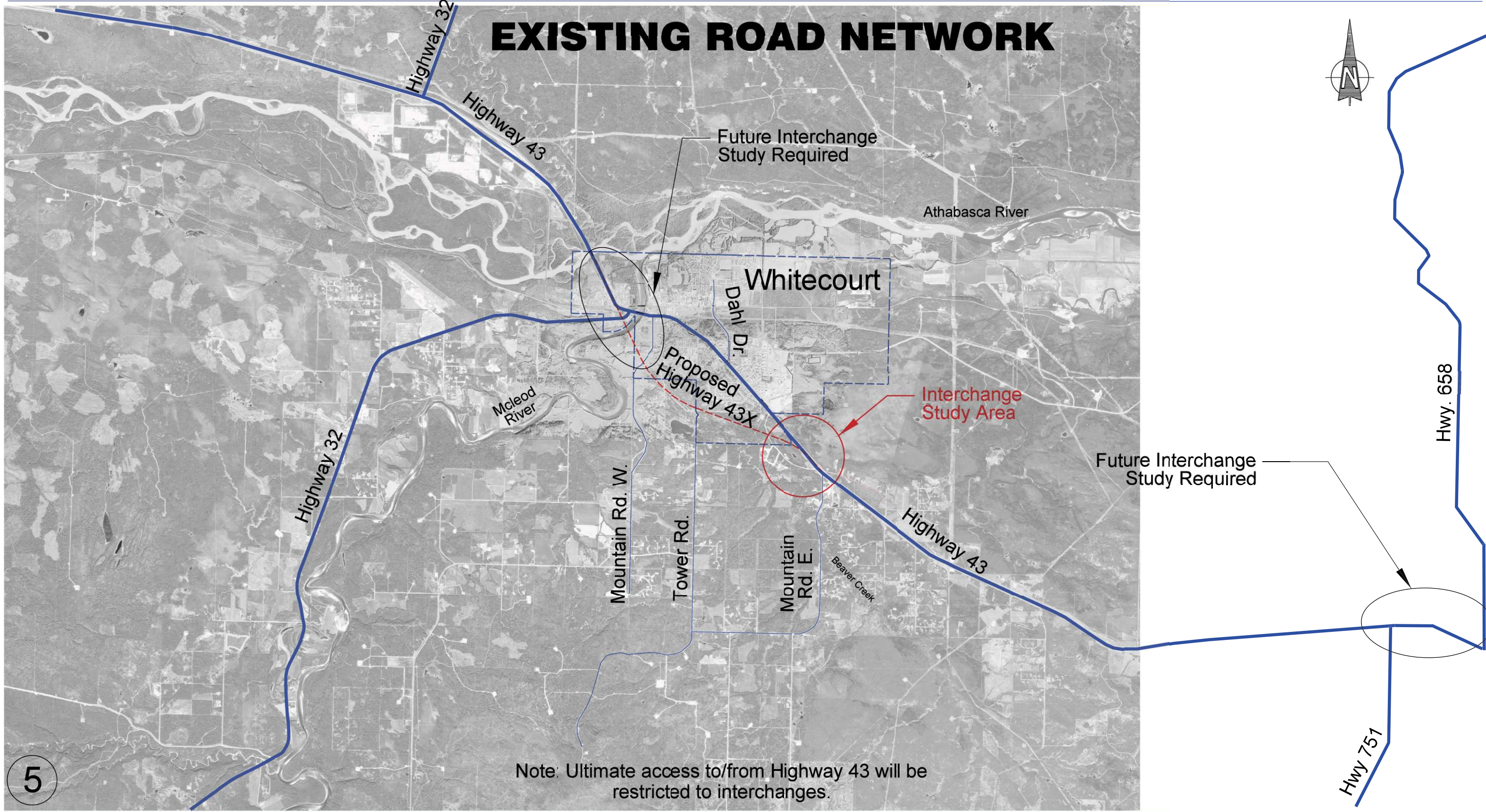
STUDY PURPOSE

- To prepare a functional plan for the Highway 43 / 43X Interchange using current standards.
- To carry out a cursory review of the gazetted Highway 43 by-pass alignment (1984).
- To prepare plans to protect sufficient right-of-way for the recommended interchange configuration.

PROJECT IMPLEMENTATION PROCESS



EXISTING ROAD NETWORK

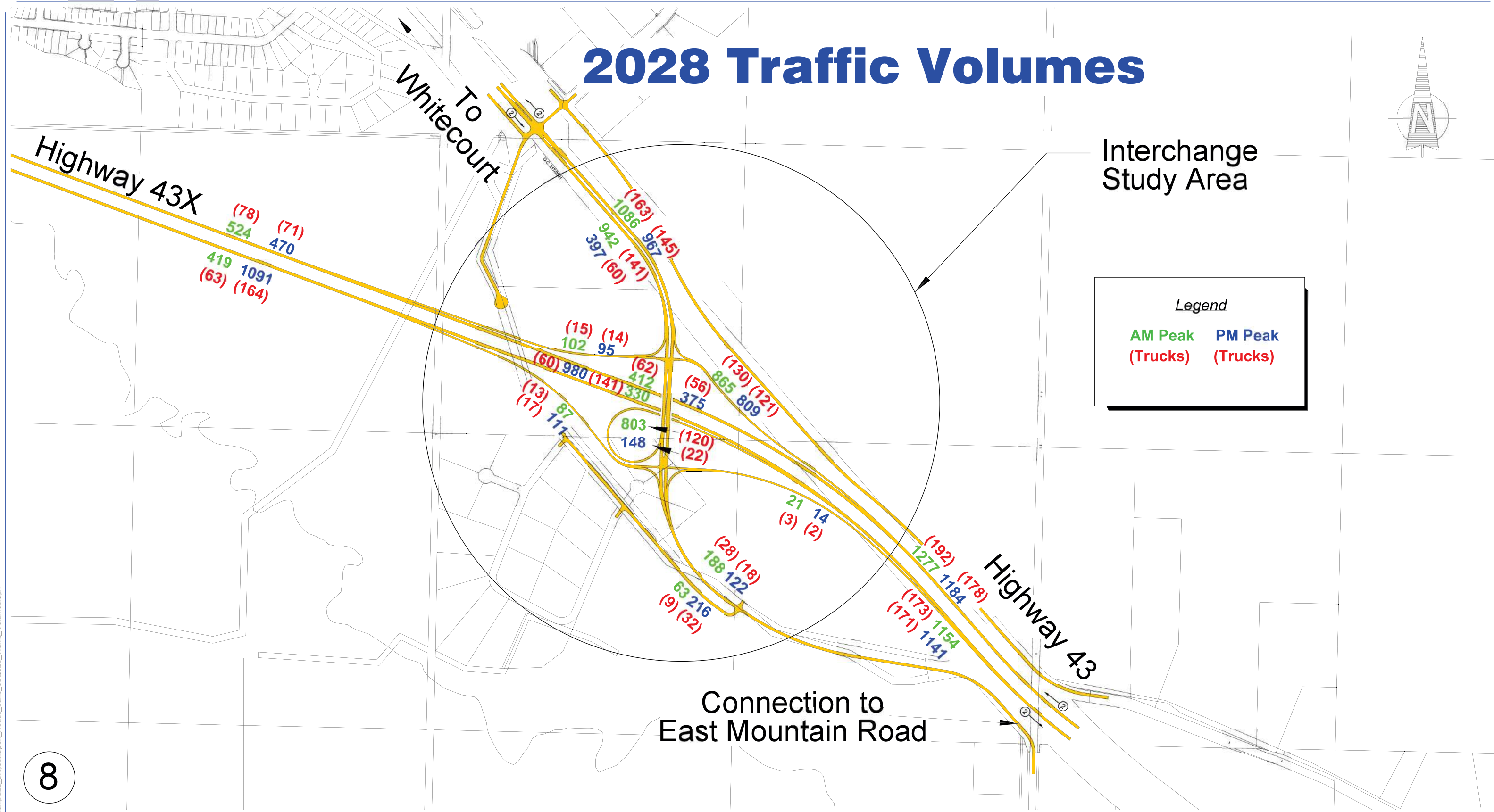
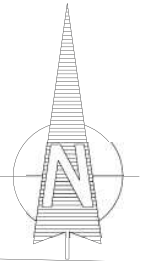


Note: Ultimate access to/from Highway 43 will be restricted to interchanges.

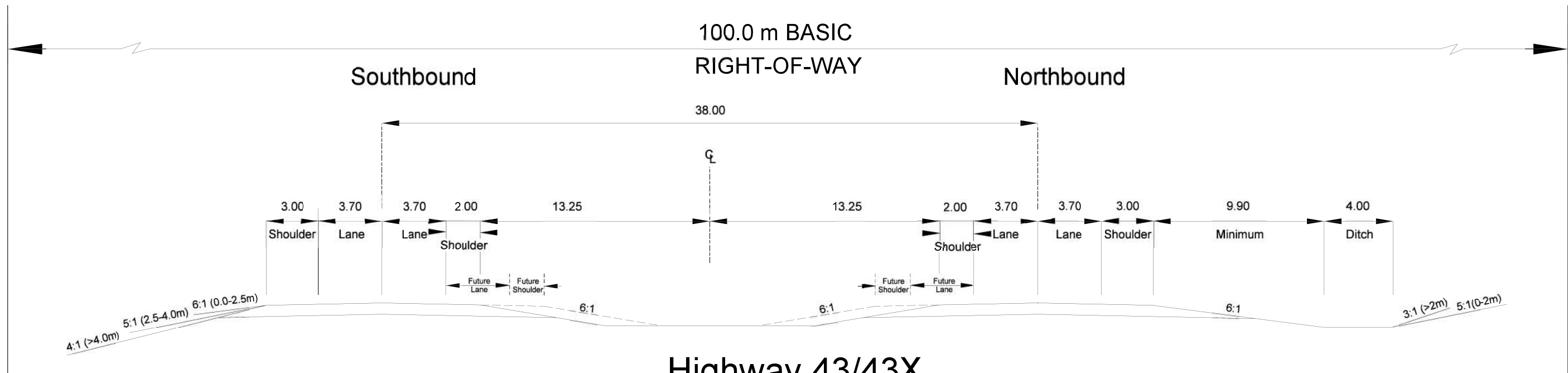
5

9/11/2008 J:\12400\12457_Hwy16_Twinning02_drafting\02a_project\Open_House_08\exist_road_network.dgn

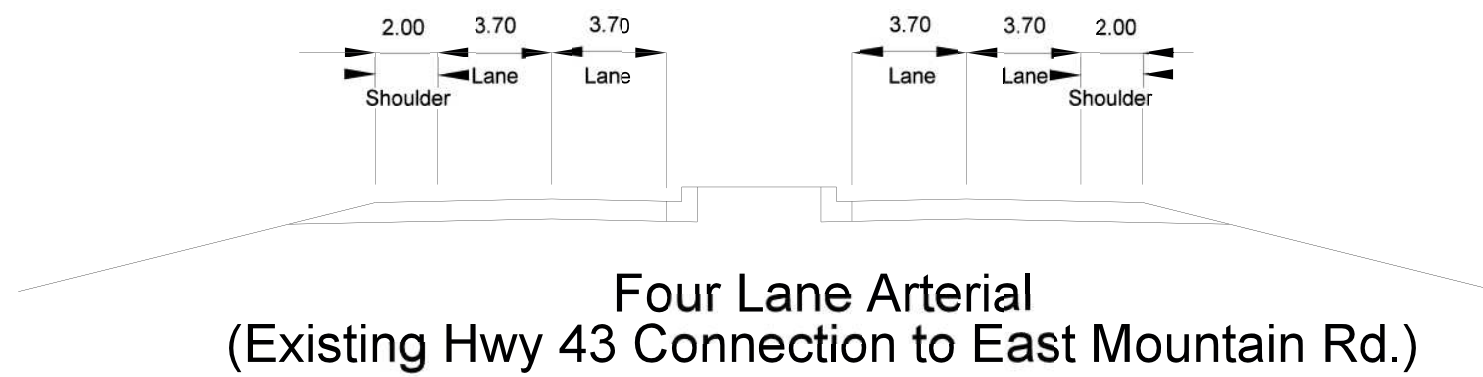
2028 Traffic Volumes



9/11/2008 J:\12400\12457_Hwy16_Twinning\02_drafting\02a_project\Open_House_June_08\2028_Traffic_Volumes.dgn



Highway 43/43X
Long Term Stage
Typical Four Lane Section



Four Lane Arterial
(Existing Hwy 43 Connection to East Mountain Rd.)

9

Highway 43 / 43X Interchange
Functional Planning Study

NEXT STEPS

- Collect feed back.
- Refine interchange options.
- Develop recommended interchange option.
- Open House (Winter 2008) to present recommended option.
- Finalize report.
- NOTE: Construction of the interchange or the by-pass is not currently scheduled.

10