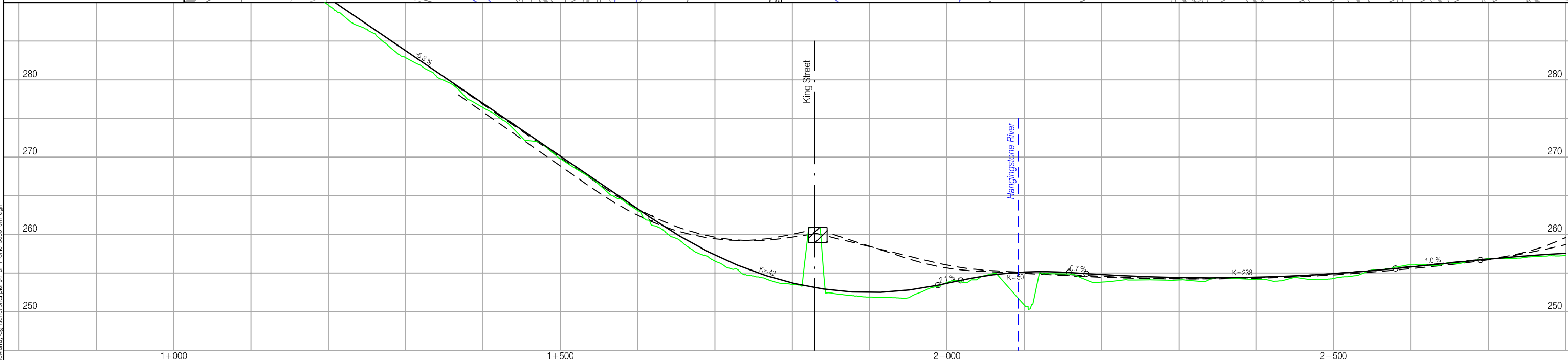


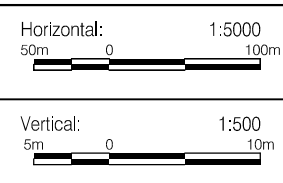
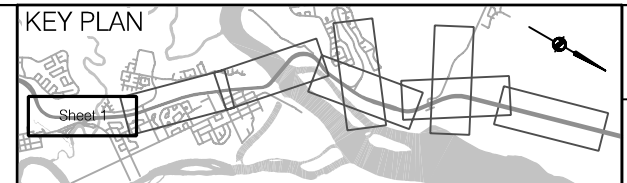
DESIGN SPEED
Highway 63 Core Lanes: 100 km/h
Collector/Distributor Lanes: 70 km/h

PRELIMINARY
For Discussion Purposes Only



LEGEND

	Proposed Alignment		Closure
	Cut-Fill Limit		Traffic Signal
	Retaining Wall		Existing Road
	Required Right-of-Way		

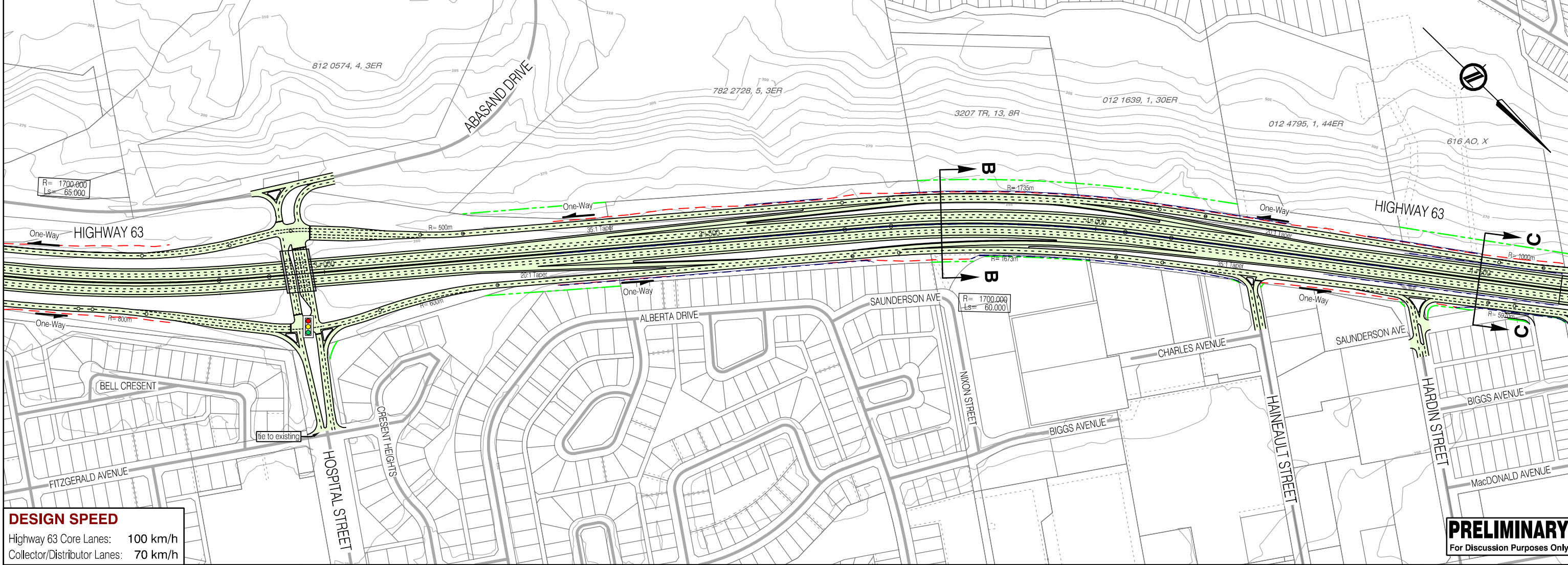


McElhanney
Consulting Services Ltd.

Alberta
INFRASTRUCTURE AND
TRANSPORTATION

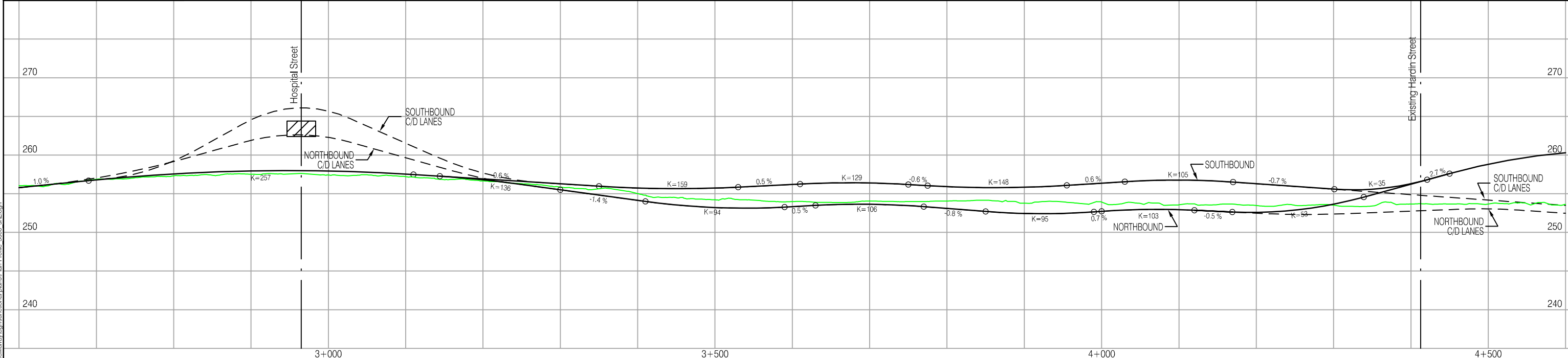
Exhibit 1.01
Functional Plan & Profile
Highway 63, Functional Planning Study
Fort McMurray, King Street to Confederation Way

Drawn by DF	Designed by RP	Checked by HD	Approved by	OCT 25 2006	Plan No. P3301.01.01
-------------	----------------	---------------	-------------	--------------------	----------------------



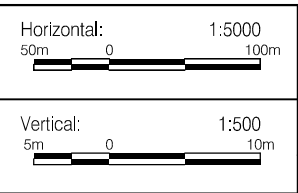
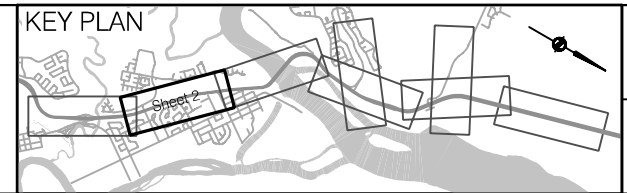
DESIGN SPEED
Highway 63 Core Lanes: 100 km/h
Collector/Distributor Lanes: 70 km/h

PRELIMINARY
For Discussion Purposes Only



LEGEND

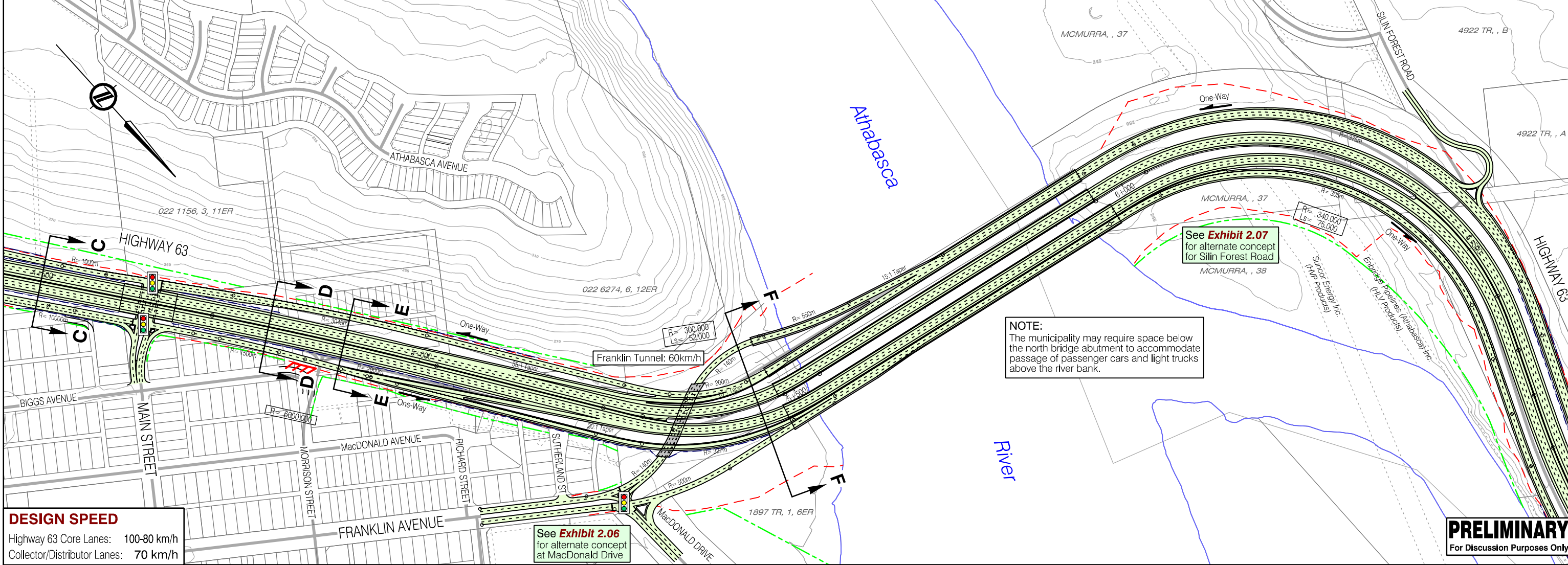
	Proposed Alignment		Closure
	Cut-Fill Limit		Traffic Signal
	Retaining Wall		Existing Road
	Required Right-of-Way		



Drawn by DF	Designed by RP	Checked by HD	Approved by

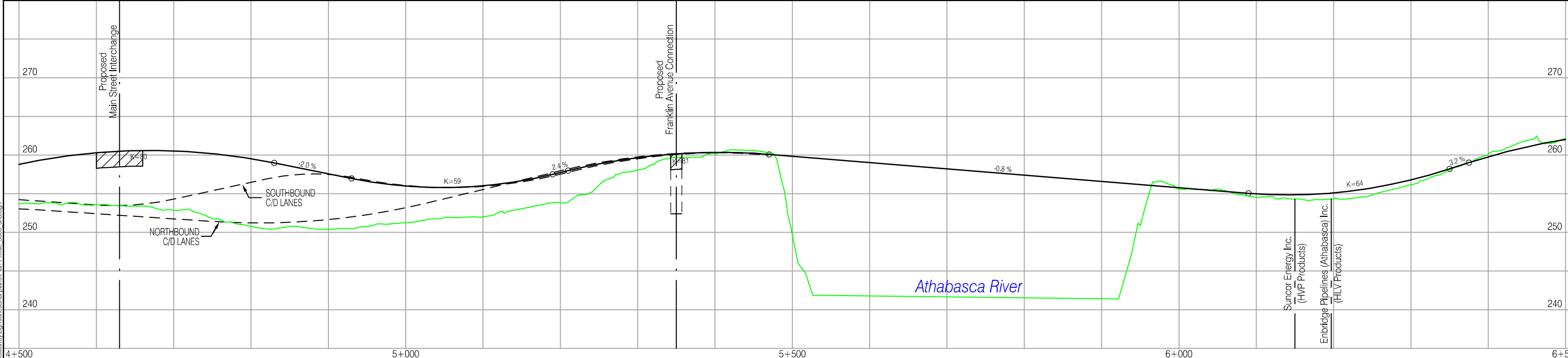
Exhibit 1.02 Functional Plan & Profile Highway 63, Functional Planning Study Fort McMurray, King Street to Confederation Way	
NOV 02 2006	Plan No. P3301.01.02

4/11/2008 C:\Users\S4_Hw63\FMCMurray\ignifunctional plans\Plan-Profile 5000 a2c.dgn



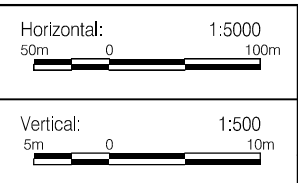
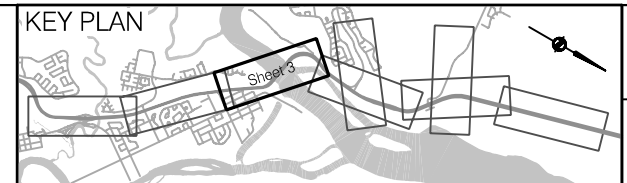
DESIGN SPEED
Highway 63 Core Lanes: 100-80 km/h
Collector/Distributor Lanes: 70 km/h

PRELIMINARY
For Discussion Purposes Only



LEGEND

	Proposed Alignment		Closure
	Cut-Fill Limit		Traffic Signal
	Retaining Wall		Existing Road
	Required Right-of-Way		

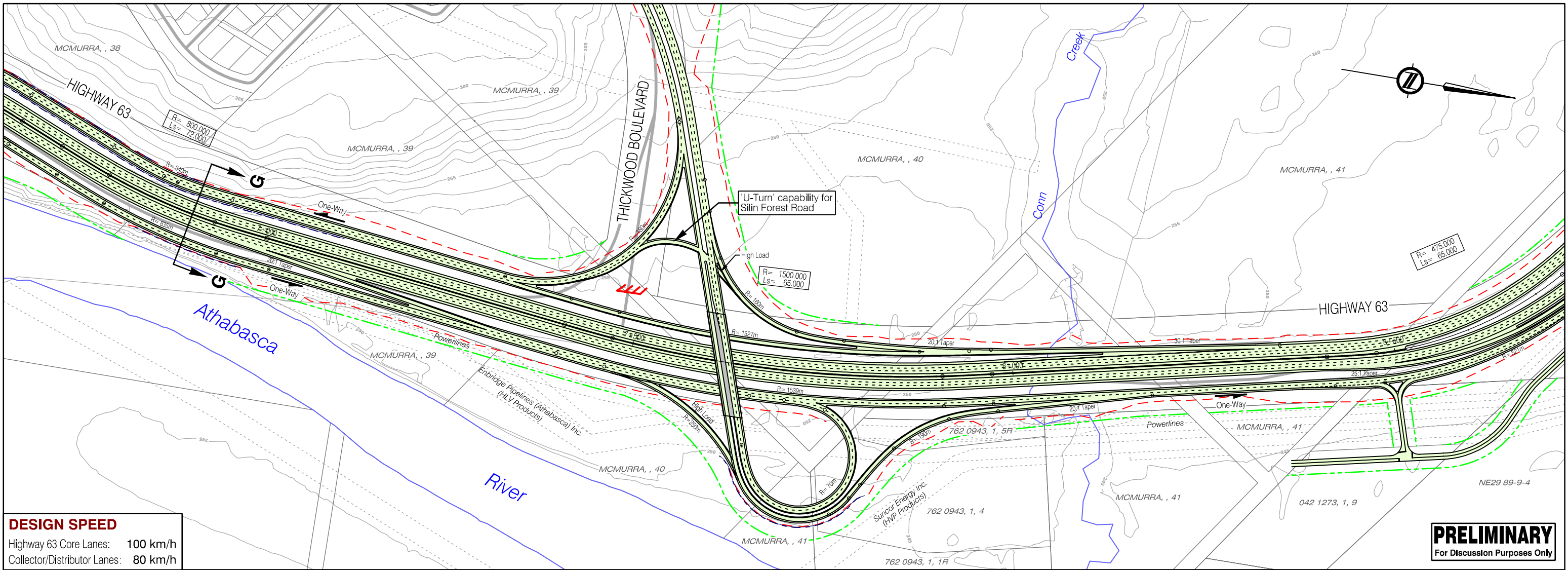


McElhanney
Consulting Services Ltd.

Alberta
INFRASTRUCTURE AND TRANSPORTATION

Exhibit 1.03
Functional Plan & Profile
Highway 63, Functional Planning Study
Fort McMurray, King Street to Confederation Way

Drawn by DF	Designed by RP	Checked by HD	Approved by	NOV 02 2006	Plan No. P3301.01.03
-------------	----------------	---------------	-------------	--------------------	----------------------



LEGEND

- Proposed Alignment
- Cut-Fill Limit
- Retaining Wall
- Required Right-of-Way
- Closure
- Traffic Signal
- Existing Road

KEY PLAN

Horizontal: 1:5000
50m 0 100m

Vertical: 1:500
5m 0 10m

McElhanney
Consulting Services Ltd.

Drawn by DF Designed by RP Checked by HD Approved by

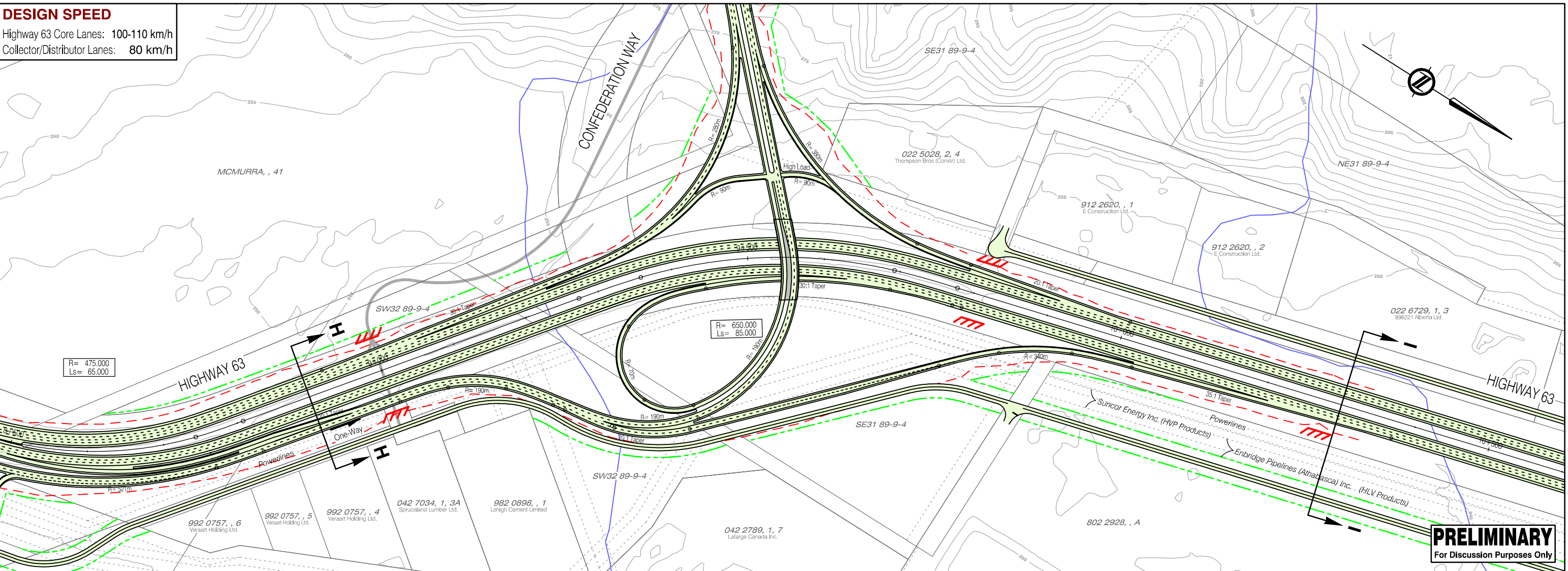
Alberta
INFRASTRUCTURE AND TRANSPORTATION

Exhibit 1.04
Functional Plan & Profile
Highway 63, Functional Planning Study
Fort McMurray, King Street to Confederation Way

NOV 02 2006

Plan No. P3301.01.04

DESIGN SPEED
Highway 63 Core Lanes: 100-110 km/h
Collector/Distributor Lanes: 80 km/h

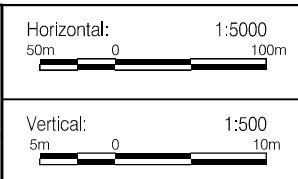


PRELIMINARY
For Discussion Purposes Only



LEGEND

	Proposed Alignment		Closure
	Cut-Fill Limit		Traffic Signal
	Retaining Wall		Existing Road
	Required Right-of-Way		

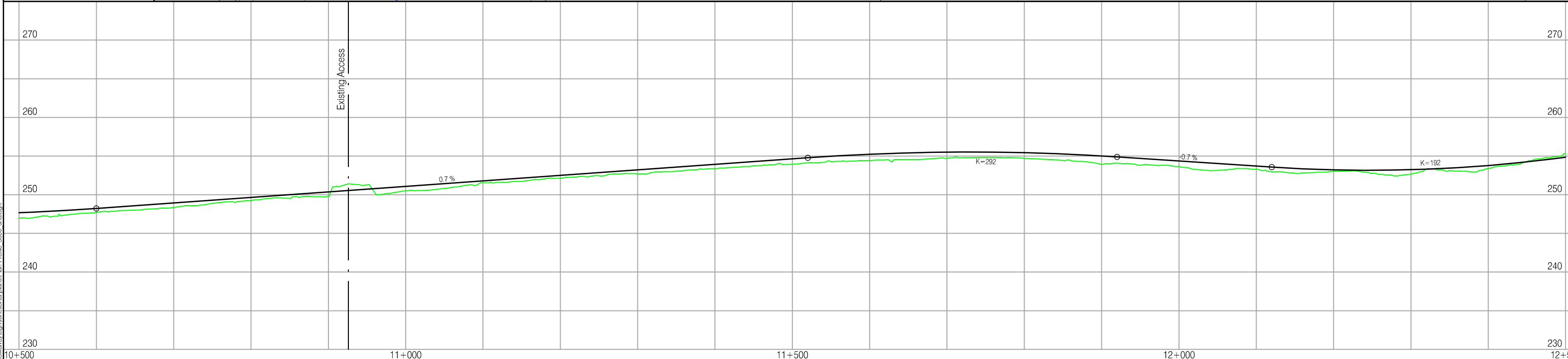
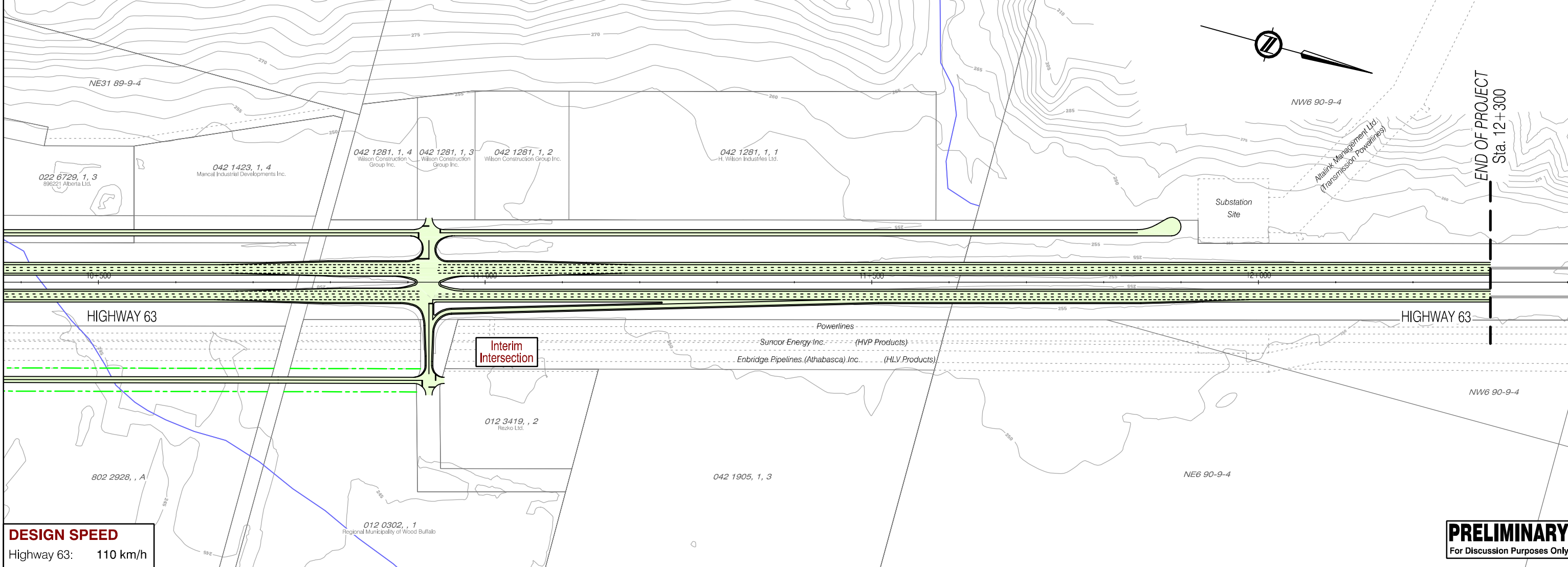


McElhanney
Consulting Services Ltd.

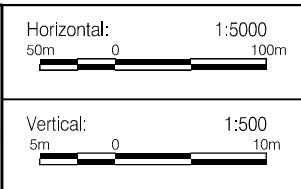
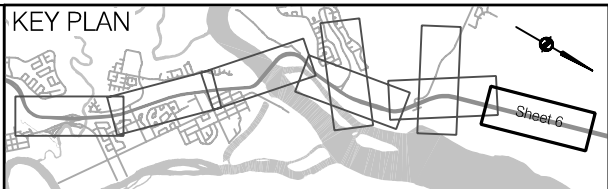
Alberta
INFRASTRUCTURE AND
TRANSPORTATION

Exhibit 1.05
Functional Plan & Profile
Highway 63, Functional Planning Study
Fort McMurray, King Street to Confederation Way

Drawn by DF	Designed by RP	Checked by HD	Approved by	FEB 15 2007	Plan No. P3301.01.05
-------------	----------------	---------------	-------------	--------------------	----------------------



LEGEND			
	Proposed Alignment		Closure
	Cut-Fill Limit		Traffic Signal
	Retaining Wall		Existing Road
	Required Right-of-Way		

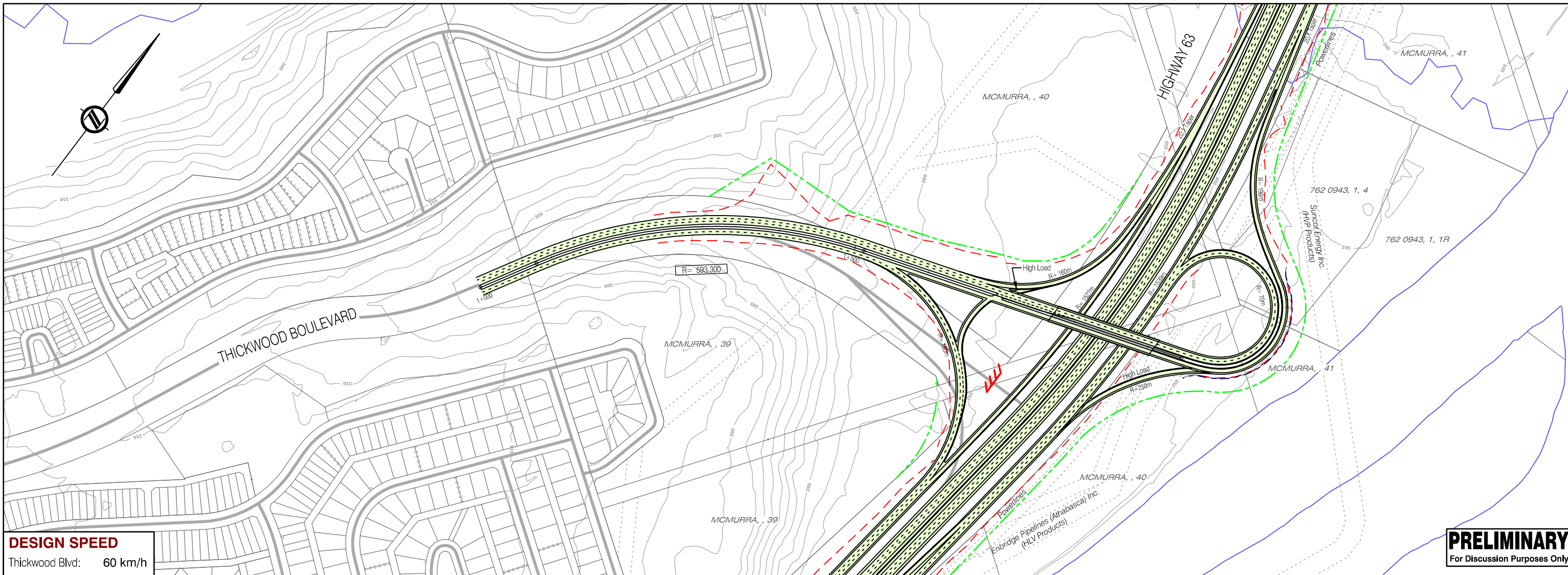


McElhanney
Consulting Services Ltd.

Alberta
INFRASTRUCTURE AND
TRANSPORTATION

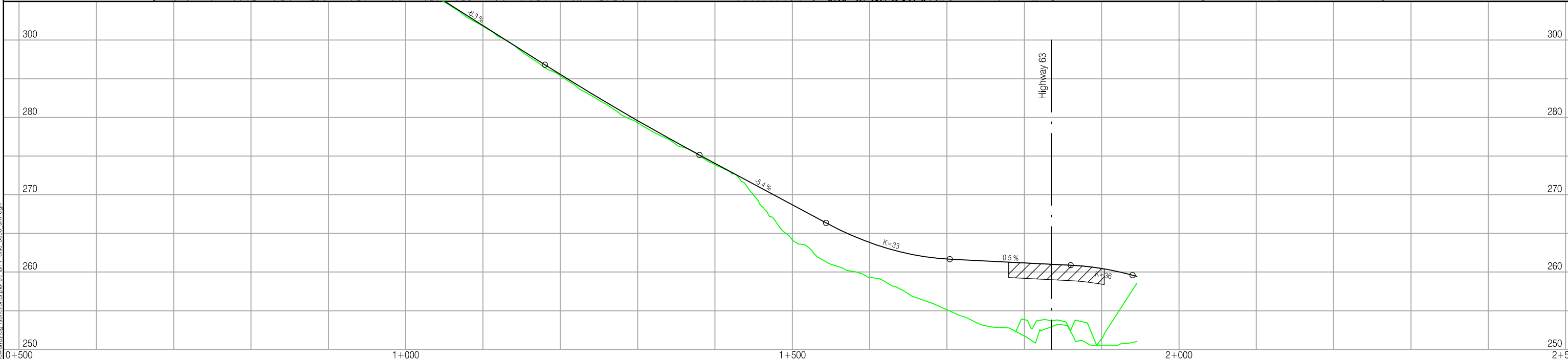
Exhibit 1.06
Functional Plan & Profile
Highway 63, Functional Planning Study
Fort McMurray, King Street to Confederation Way

Drawn by DF	Designed by RP	Checked by HD	Approved by	FEB 21 2006	Plan No. P3301.01.06
-------------	----------------	---------------	-------------	--------------------	----------------------



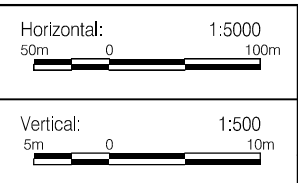
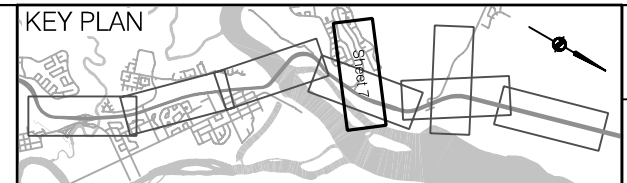
DESIGN SPEED
Thickwood Blvd: 60 km/h

PRELIMINARY
For Discussion Purposes Only



LEGEND

- Proposed Alignment
- Cut-Fill Limit
- Retaining Wall
- Required Right-of-Way
- Closure
- Traffic Signal
- Existing Road



McElhanney
Consulting Services Ltd.

Drawn by DF Designed by RP

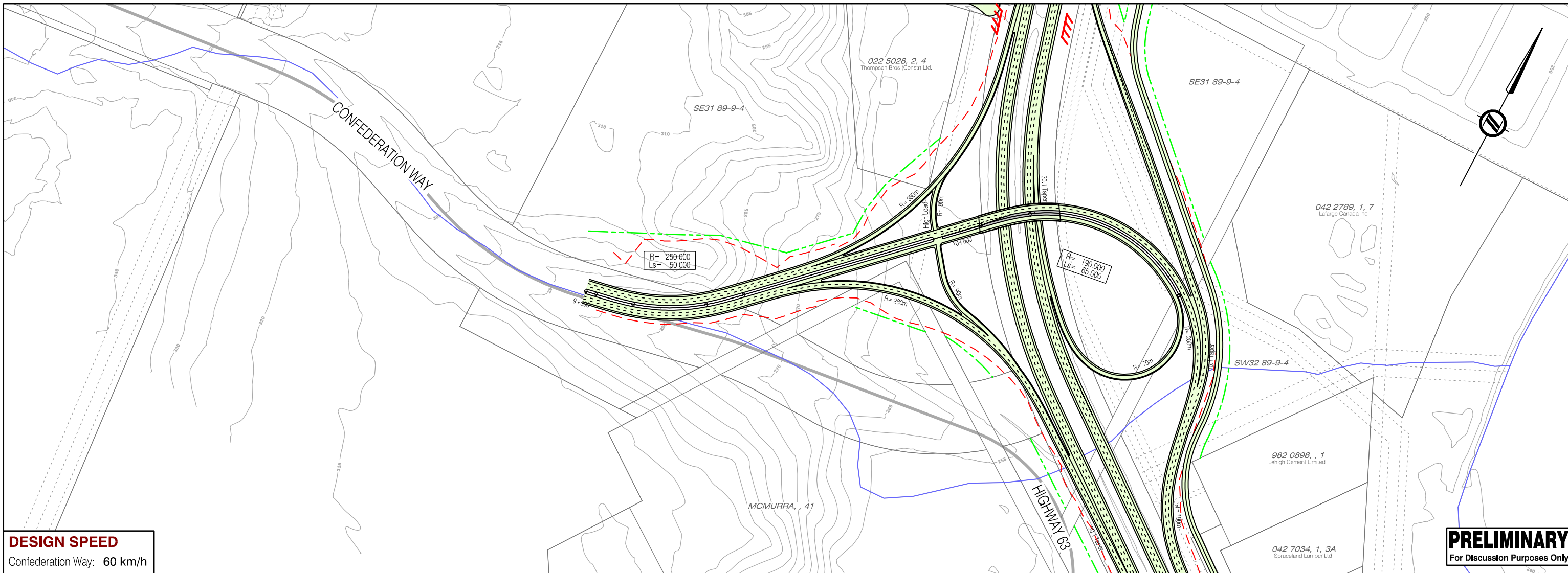
Alberta
INFRASTRUCTURE AND TRANSPORTATION

Checked by HD Approved by

Exhibit 1.07
Functional Plan & Profile
Highway 63, Functional Planning Study
Fort McMurray, King Street to Confederation Way

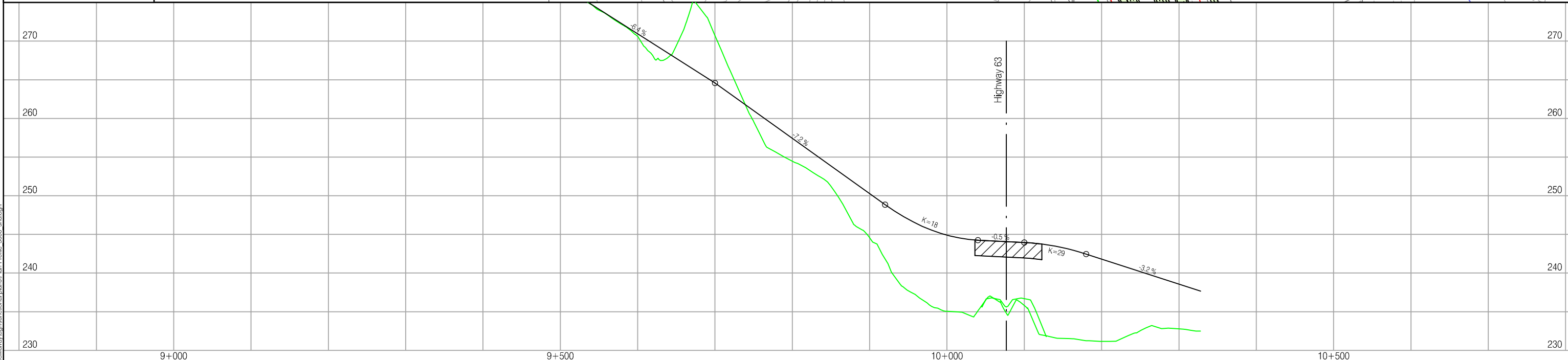
FEB 21 2006

Plan No. P3301.01.07



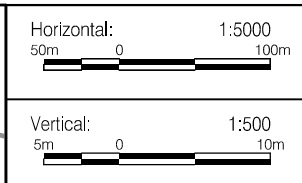
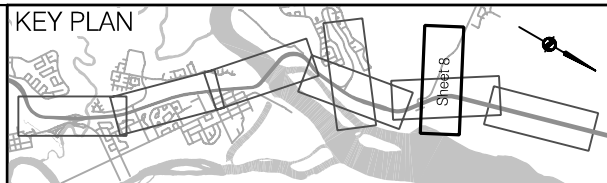
DESIGN SPEED
Confederation Way: 60 km/h

PRELIMINARY
For Discussion Purposes Only



LEGEND

	Proposed Alignment		Closure
	Cut-Fill Limit		Traffic Signal
	Retaining Wall		Existing Road
	Required Right-of-Way		



McElhanney
Consulting Services Ltd.

Alberta
INFRASTRUCTURE AND
TRANSPORTATION

Exhibit 1.08
Functional Plan & Profile
Highway 63, Functional Planning Study
Fort McMurray, King Street to Confederation Way

Drawn by DF	Designed by RP	Checked by HD	Approved by	MAR 30 2006	Plan No. P3301.01.08
-------------	----------------	---------------	-------------	--------------------	----------------------