

DESIGN BULLETIN #41/2006

Amendments to the Traffic Accommodation Manuals Double Speed Infraction Fine Signage in Active Work Areas in Construction Zones

**SUPERSEDED IN 2008 BY TRAFFIC
ACCOMMODATION IN WORK ZONES MANUAL:
<http://www.transportation.alberta.ca/3815.htm>**

Summary

This Bulletin is issued as an amendment to the Alberta Infrastructure and Transportation Traffic Accommodation in Work Zones Manual, 2nd Edition and the Traffic Accommodation in Urban Work Zones, 1st Edition on the requirements of proper signage for compliance with the legislation for double speed infraction fines in active work areas in construction zones. An "active work area" is a construction/maintenance area within the highway right-of-way where workers are present operating heavy equipment, acting as flag persons, working with hand tools on the ground, etc.

Motorists driving in the Province of Alberta must obey the posted speed limit in active work areas when a flag person, worker, or equipment occupied by a worker performing road work is present, or face penalties of double the fine for a speed infraction.

This legislation (amendment to section 115 of the Traffic Safety Act) was enacted to further encourage motorists to adhere to the speed limits and warnings posted in active work areas. Construction zone safety and the exposure of workers to traffic related injury are a major concern on Alberta roads each year. To ensure that motorists are clearly aware of when the double fines apply, the double fine signage must (where practical) be applied to active highway work areas where workers are exposed to the possibility of an errant vehicle causing a collision which may result in worker injury or death.

Key Changes

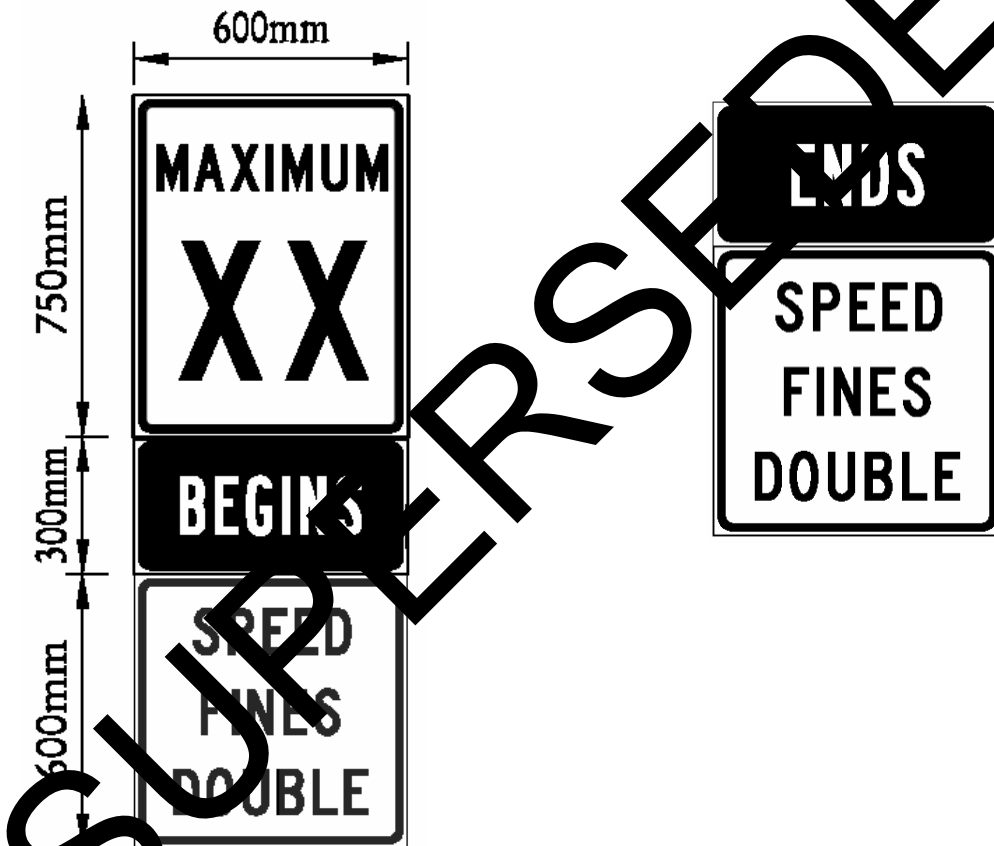
Changes to the department practice for speed related signage in active work areas have been made. These include the following:

- Active work areas must be kept as short as possible, and only extend where actually needed to improve speed limit compliance.

- Signage must (where practical) be installed in advance of an active work area to mark the beginning of the area in which the double speed infraction fine applies. If used, the active work area 'Speed Fines Double' sign and 'Begins' sign will be mounted below the RB-1 Maximum Speed sign marking the active work area speed limit, which may be a reduction from the normal speed limit. The figure below (refer to sign patterns ID-503 and ID-503A for fabrication details) illustrates how the 'Speed Fines Double' and 'Begins' signs are to be used in conjunction with the Maximum Speed sign to designate a double fine area. The double fine area will terminate at the 'Speed Fines Double' and 'Ends' signs (refer to sign patterns ID -503 and ID-503B, shown in the figure below) installed on the other side of the active work area, just prior to the reinstatement of the normal speed limit. The signing layout drawing TCS-B-8.1 (attached) shows an example of active work area signage.

Figure 1

Start of Double Fine Area Signage **End of Double Fine Area Signage**



- An alternate sign arrangement can be used to mark the beginning of a double fine area. In the event that the above arrangement is not feasible, the arrangement may be split into two signs. The 'Begins' and 'Speed Fines Double' signs are to be installed together immediately in advance of the RB-1 Maximum Speed sign. This sign arrangement may be practical for mobile or short duration active work areas.

- 'Speed Fines Double', 'Begins' and 'Ends' signs must be covered or removed when workers are not present. No double fines will be issued during these times. However, there may still be dangers to motorists travelling through the area, and motorists are still obligated to obey all warning and speed limit signs under penalty of the normal fines.
- The beginning of double fine areas will not always be distinctly marked. The 'Speed Fines Double', 'Begins' and 'Ends' signs must be used to mark the extents of active work areas in high speed situations (greater than 70 km/h legislated speed limit). Active work areas in lower speed environments, such as urban areas, may not have these signs. In addition, active work areas set up for longer duration projects must receive 'Speed Fines Double', 'Begins' and 'Ends' signs, whereas areas set up for very temporary work may not receive the signs. Motorists can be issued double fines regardless of whether or not 'Speed Fines Double', 'Begins' and 'Ends' signs are installed, provided that workers are present or it is anticipated (through visual cues or public construction information/knowledge) that workers will be present (i.e., it is an active work area).
- A construction zone can be composed of more than one active work area. In this situation, more than one double fine area may exist within a given construction zone. If this is the case, generally, the extent of each double fine area will coincide with RB-1 Maximum Speed signage used to mark the extent of each active work area (whether there is a speed reduction for the active work area or not).

The planning and identification of double fine areas is a part of the traffic accommodation and signing strategy plan for a given project. The installation of the signs must therefore be done by designated on-site workers under the supervision of the site superintendent.

The new guidelines as indicated in this Bulletin are to be implemented immediately as per the usual practice. Any projects not yet tendered shall comply with this Bulletin.

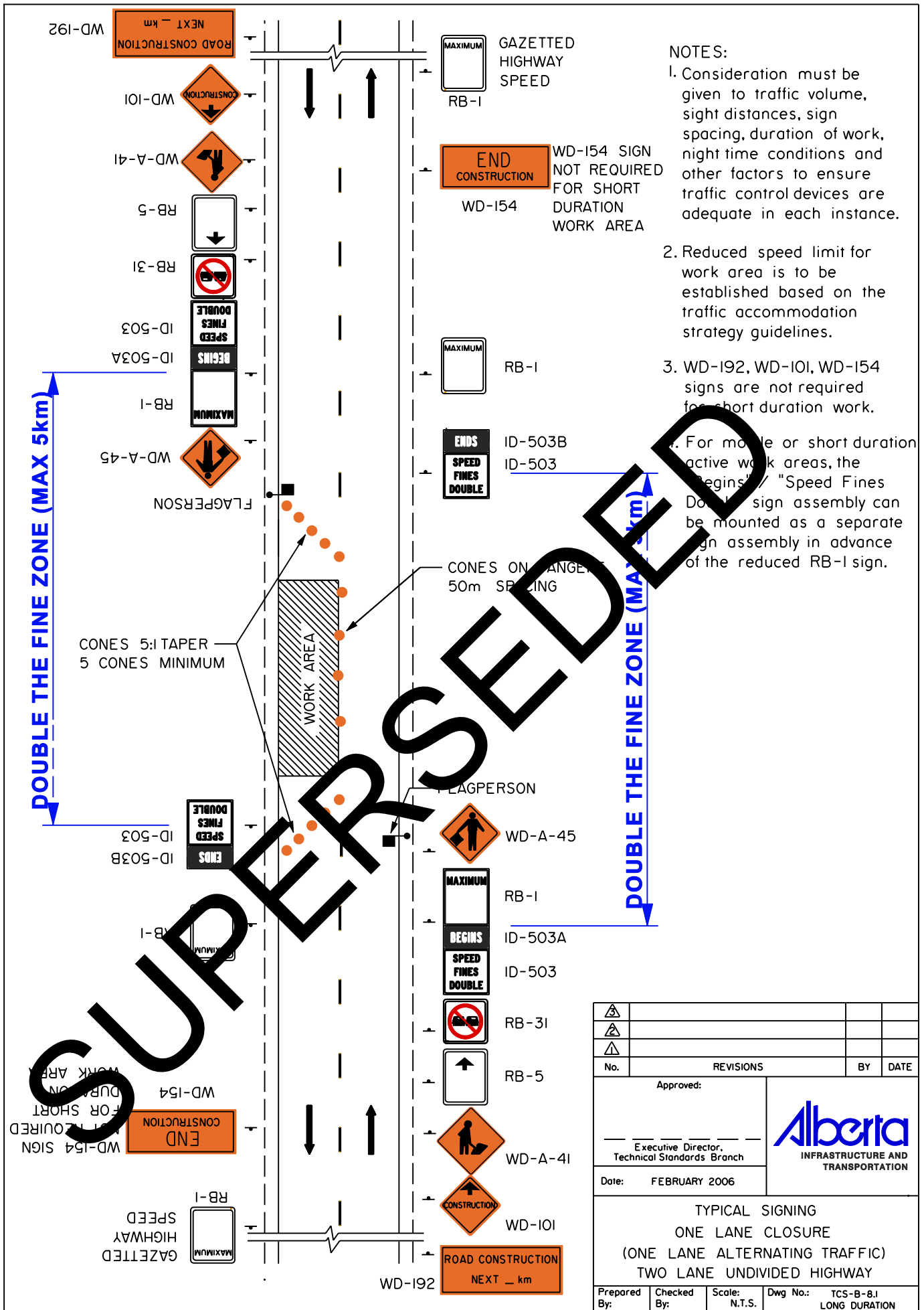
Effective Date: Immediately.

Contact

Contact: Richard Chou or Corinna Mulyk, Technical Standards Branch, Alberta Infrastructure and Transportation

References

Traffic Accommodation in Work Zones Manual, 2nd Edition.
Traffic Accommodation in Urban Work Zones Manual, 1st Edition.



NOTES:
 1. Consideration must be given to traffic volume, sight distances, sign spacing, duration of work, night time conditions and other factors to ensure traffic control devices are adequate in each instance.

2. Reduced speed limit for work area is to be established based on the traffic accommodation strategy guidelines.

3. WD-192, WD-101, WD-154 signs are not required for short duration work.

4. For mobile or short duration active work areas, the "Speed Fines Begins" / "Speed Fines Double" sign assembly can be mounted as a separate sign assembly in advance of the reduced RB-1 sign.

△			
△			
△			
No.	REVISIONS	BY	DATE
Approved:			
Executive Director, Technical Standards Branch			
Date: FEBRUARY 2006			
TYPICAL SIGNING ONE LANE CLOSURE (ONE LANE ALTERNATING TRAFFIC) TWO LANE UNDIVIDED HIGHWAY			
Prepared By:	Checked By:	Scale: N.T.S.	Dwg No.: TCS-B-8.1 LONG DURATION