

Alberta
2012

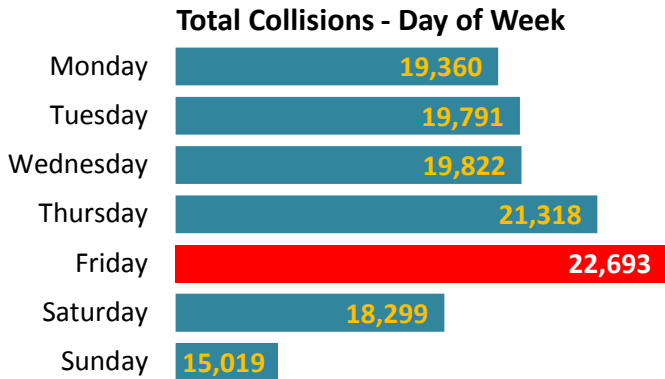
Collision Facts

- 345 people killed ■
- 18,220 people injured ■
- 136,595 collisions ■

September 2013

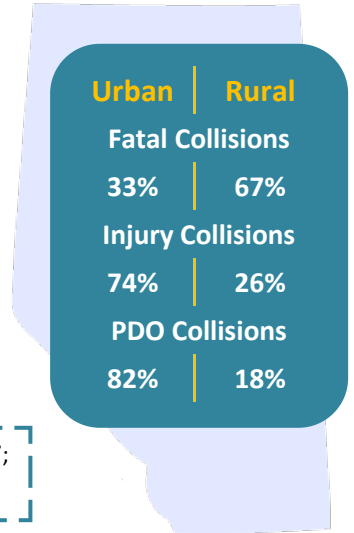
Collision Facts

■ 345 people killed ■ 18,220 people injured ■ 136,595 collisions ■

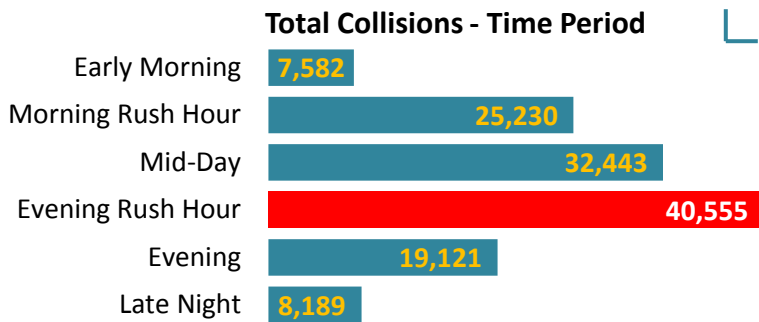


Total Number of Collisions

Fatal	307
Injury	13,822
PDO	122,466
Total	136,595



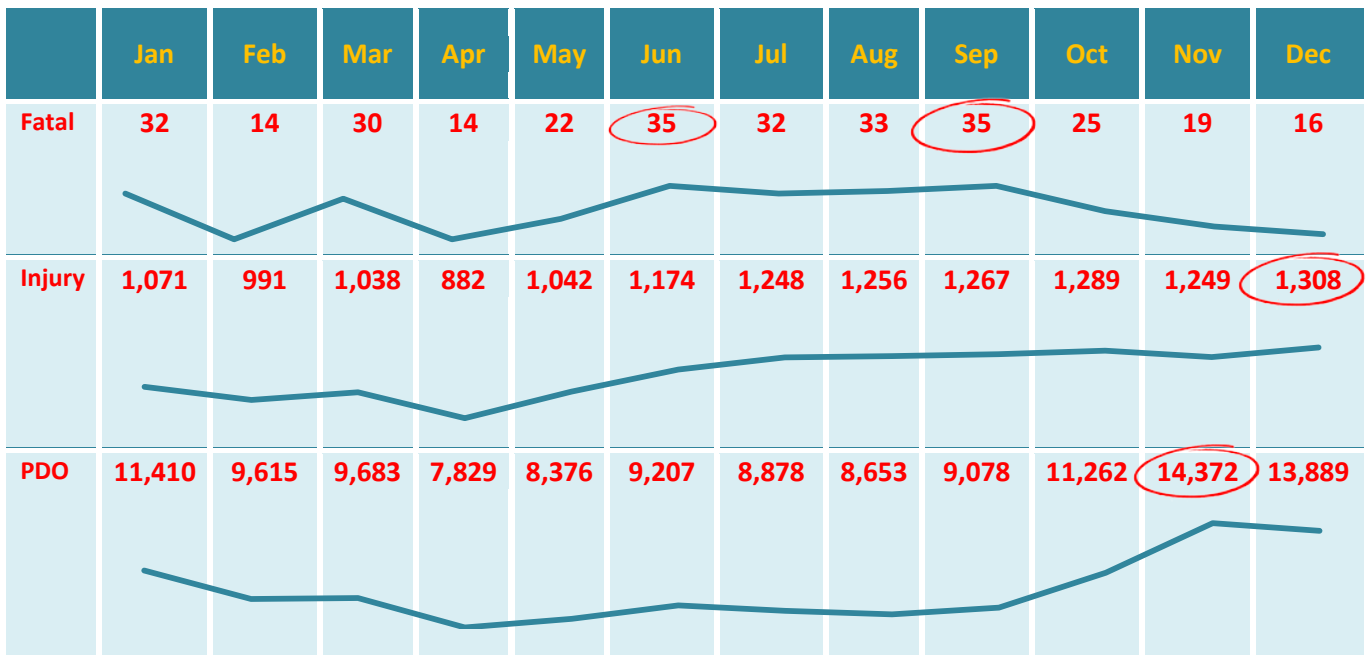
PDO means 'Property Damage Only';
in other words, nobody was hurt



Total Number of Casualties

Fatalities	345
Major Injuries	2,913
Minor Injuries	15,307
Total	18,565

Month of Collision Occurrence

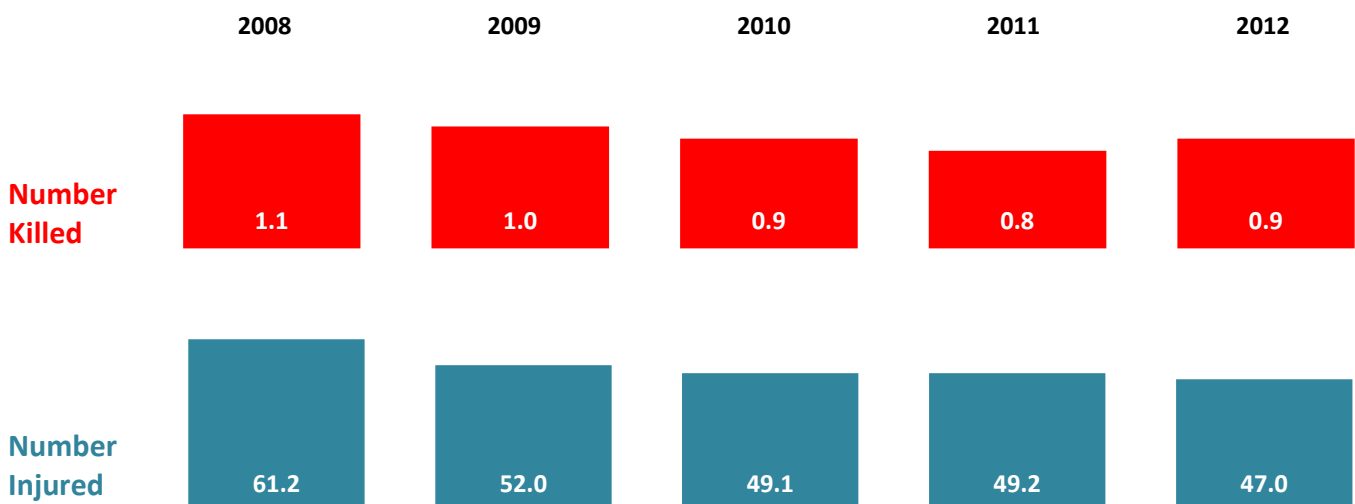


Collision Rates per 10,000 Population



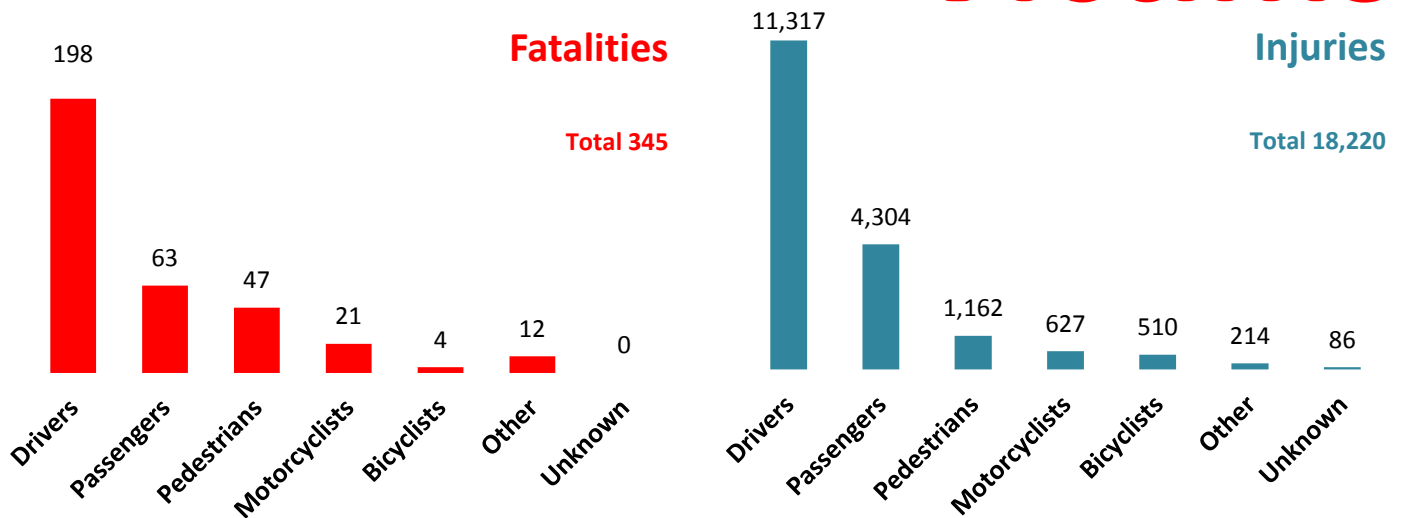
*On January 1, 2011, the reporting threshold for property damage only collisions increased from \$1000 to \$2000.

Casualty Rates per 10,000 Population

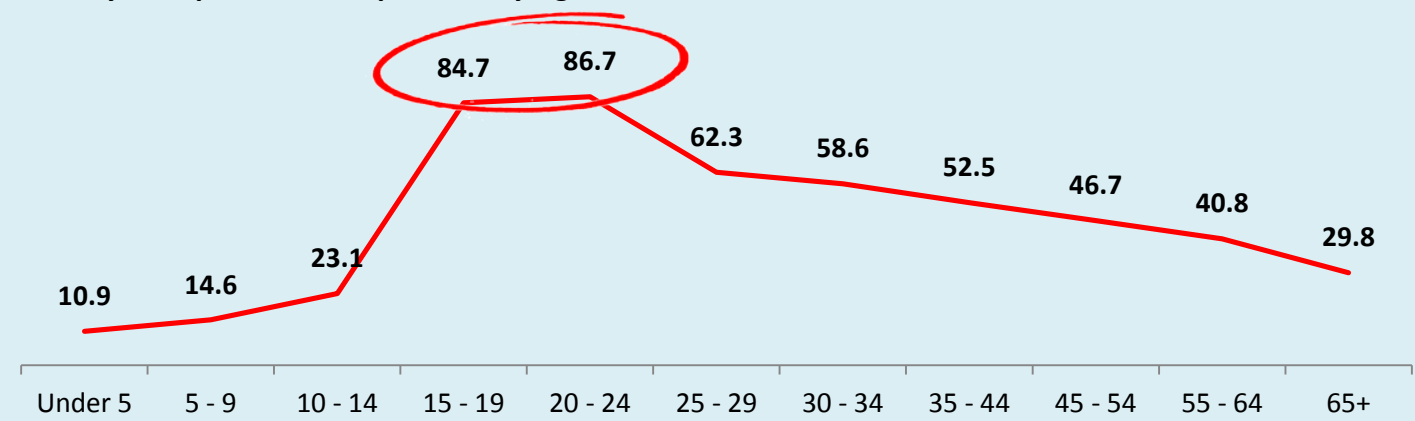


Alberta 2012

Victims



Casualty Rate per 10,000 Population by Age



■ The Alberta seat belt wearing rate was 95.1% in 2011* ■

■ Seatbelt users had a much lower injury rate (7.7%) than those not using seatbelts (30.1%) ■

Did Not Use a Seatbelt



Used a Seatbelt



■ Fatal Injury ■ Major Injury ■ Minor Injury

■ **88% of total collisions involved at least one driver who committed a driving error** ■

Speeding Increases Collision Severity

1 in 3 drivers in fatal collisions and 1 in 10 drivers in injury crashes were driving at an unsafe speed

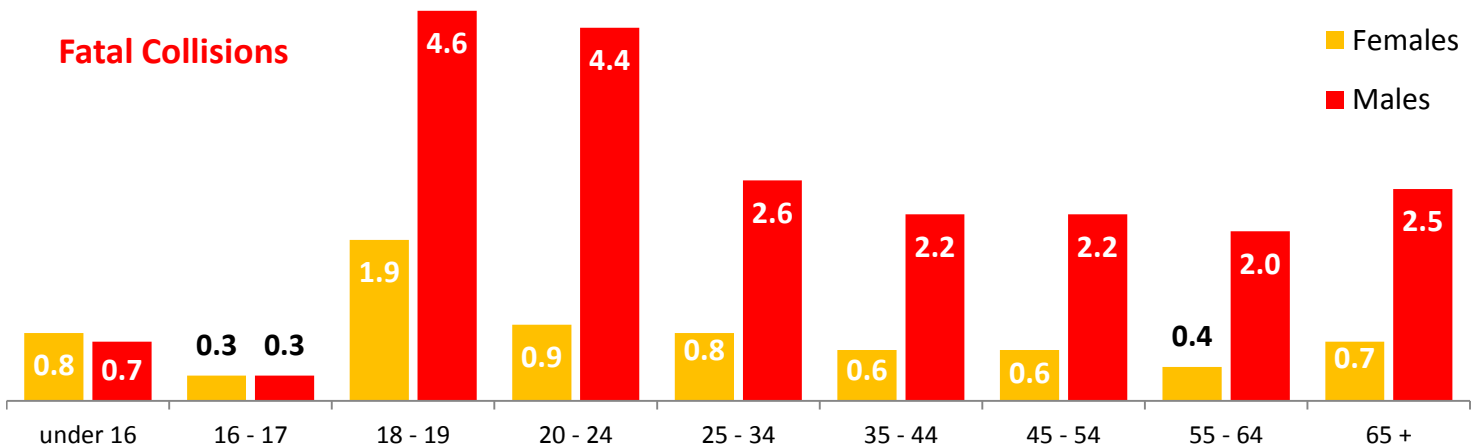


54% of crashes on rural highways involved an animal

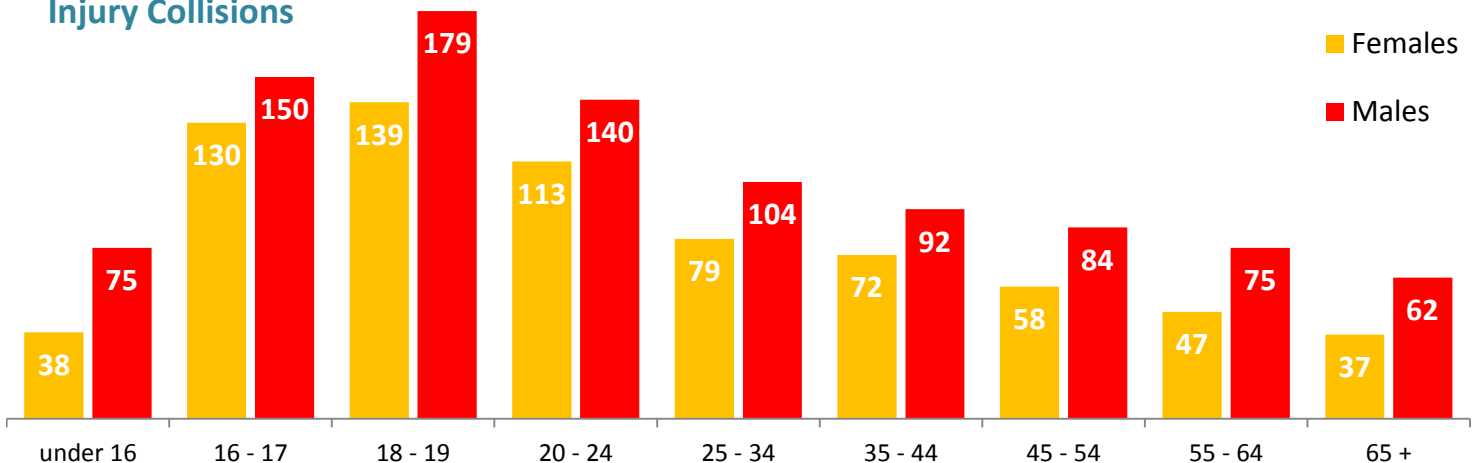
Of these crashes, 3% resulted in human casualties. The crash factors that lead to deaths and injuries include things like speeding, 'tailgating' and drinking and driving.

Involvement Rates per 10,000 Licensed Drivers

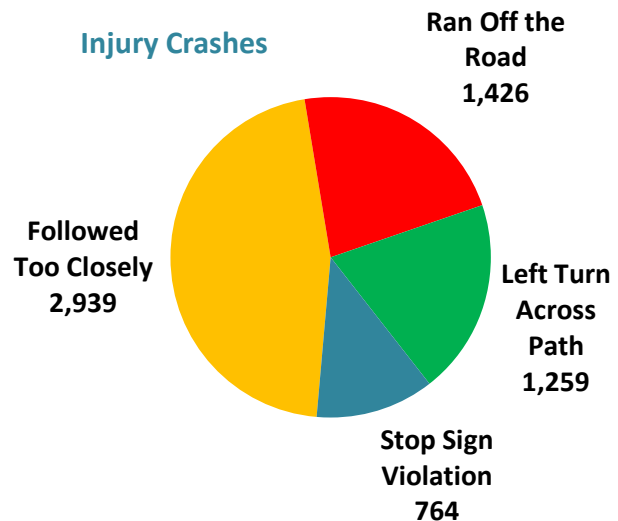
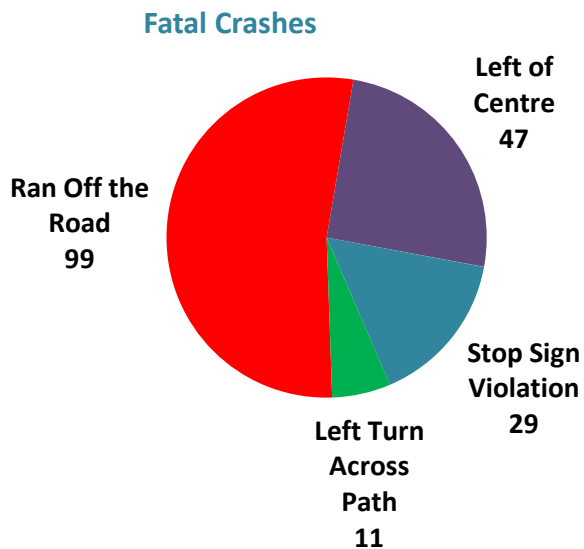
Fatal Collisions



Injury Collisions



Most Common Driver Errors Include...

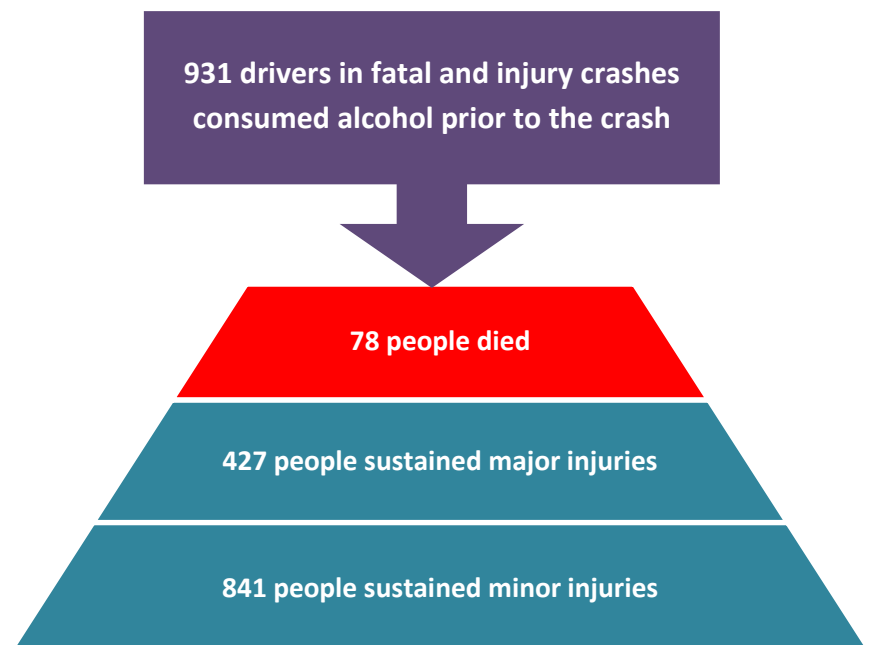
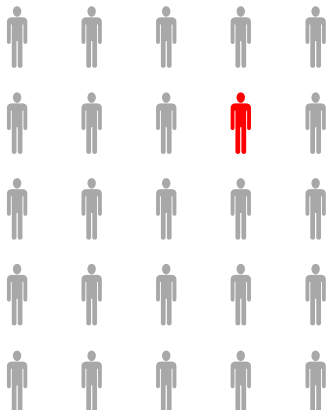


Drinking Drivers...

1 in 5 Drivers in Fatal Crashes Drank



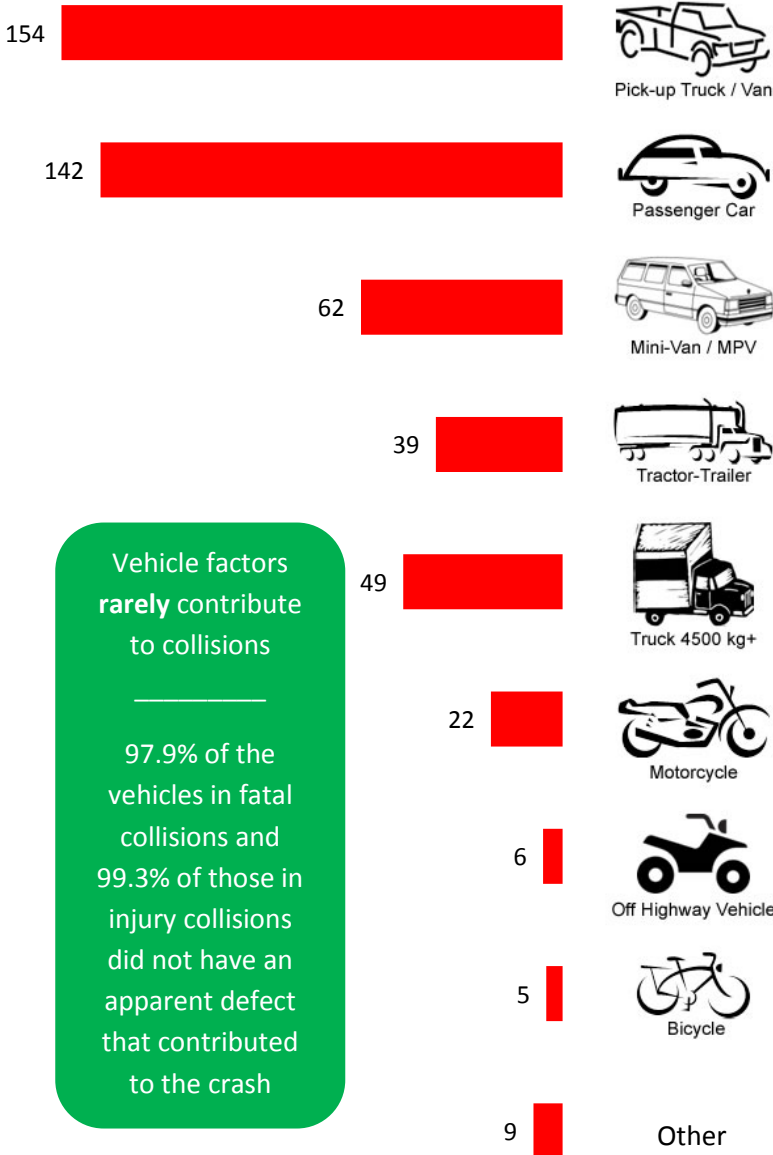
1 in 25 Drivers in Injury Crashes Drank



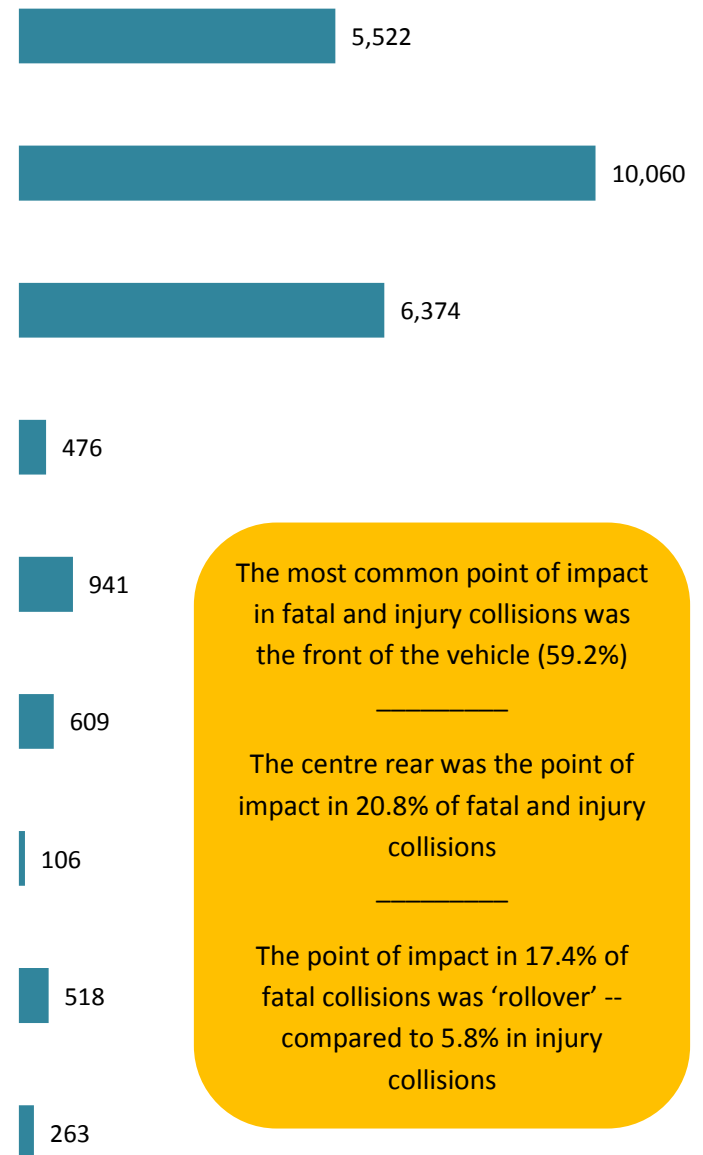
Involvement Rates per 1,000 Licensed Drivers Show...

- Males aged 18 - 21 were most likely to have consumed alcohol before the crash ■
- Four times more males than females consumed alcohol before the crash ■

Fatal Collisions



Injury Collisions



Vehicle factors rarely contribute to collisions

97.9% of the vehicles in fatal collisions and 99.3% of those in injury collisions did not have an apparent defect that contributed to the crash

The most common point of impact in fatal and injury collisions was the front of the vehicle (59.2%)

The centre rear was the point of impact in 20.8% of fatal and injury collisions

The point of impact in 17.4% of fatal collisions was 'rollover' -- compared to 5.8% in injury collisions

Visit www.transportation.alberta.ca/statistics for more information on motor vehicle collisions in Alberta

*Visit www.transportation.alberta.ca/Content/docType48/Production/AlbertaSeatBeltUse2006-2011.pdf for more information on seatbelt wearing rates in Alberta.

Note: The information presented in this fact sheet is based on those cases where the respective information was specified on the Alberta Collision Report Form. For more information on the categories presented in this report and motor vehicle collisions in Alberta, please refer to the annual Alberta Traffic Collision Statistics report, available at the above website.